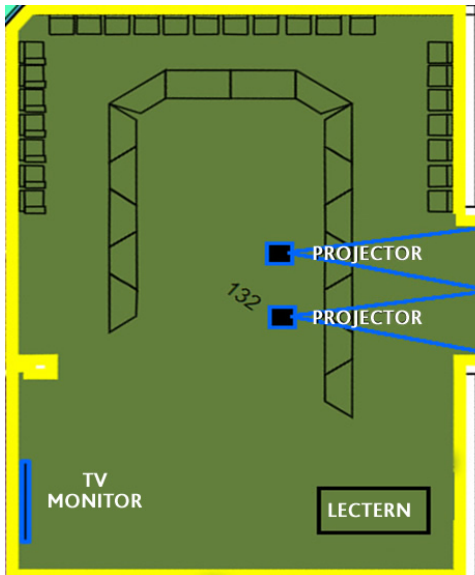




## Room layout

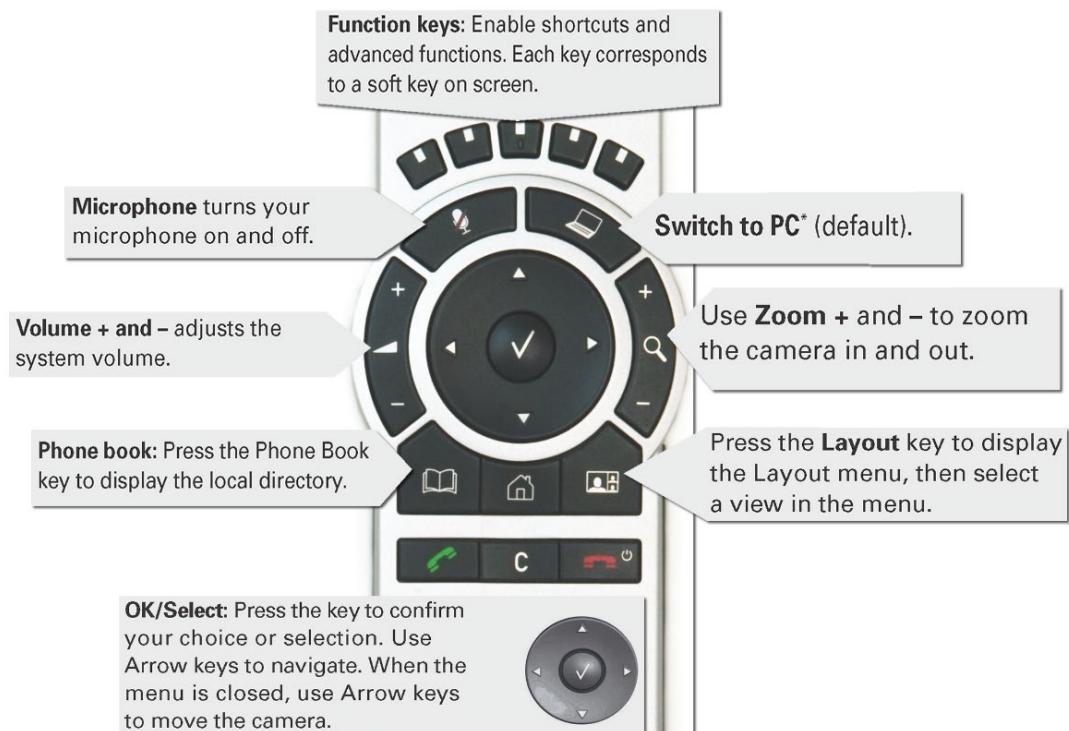


### AV System

- 2x Projectors
- 1x Large TV monitor
- AiO desktop PC
- Document camera
- Cisco Videoconference
- Cisco remote control
- 2x Video cameras
- Lecture Capture (Panopto)
- Microphone - lectern & ceiling
- HDMI cable with adaptors

## Cisco Remote Control

- **Use for all interaction with the AV system – point towards the presenter camera**

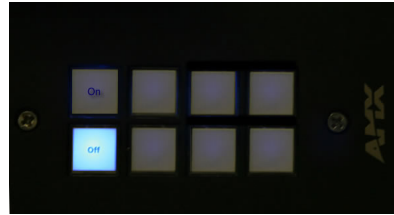


## Desktop PC display

- Hold down the **Windows key** and press the **P-key** on the keyboard to access the PC display settings. Select 'Duplicate' on the floating menu. To show PowerPoint with notes, select 'Extend' from the floating menu.

## Projector Control

- Press the **On** button to turn on both projectors.



## Panopto Lecture Capture

- **Audio** – the presenter's desk microphone records the presenter's voice.
- **Presenter Video** - the presenter camera is by default selected as the recorded camera stream and changing to the audience camera will not change that. Ensure the camera is set at an angle to cover all the anticipated movements.
- **Presentation** - press the **Switch to PC key** on the Cisco remote to add a computer or laptop presentation to the recording.

## Show Presentation

- **Show Desktop PC**  
Briefly press the **Switch to PC** key on the Cisco remote.
- **Show Laptop**
  1. Connect the HDMI cable
  2. Enable the laptop's dual display (Duplicate)
  3. Briefly press the **Switch to PC** key.
- **Show Document camera**
  1. Press the **Home key** (house) on the Cisco remote
  2. Select **Presentation**
  3. Select **Doc Cam** from the drop down menu
  4. Press the **OK/Select key** (white tick)

## Volume control

- Press the +/- buttons on the Cisco remote control to adjust the playback volume of the PC or laptop. Ensure the PC/laptop volume is turned up and not muted.

## Videoconferencing

1. Activate the AV system by picking up the Cisco remote.
2. If a menu appears in the bottom left corner, click the **Arrow left** key to close it.

## Camera adjustment

1. Press the pan, tilt or zoom keys to adjust the camera angle and ensure you are visible to the far end at all times regardless of your anticipated movements. A picture-in-picture (PiP) at the bottom right of the display shows the current camera angle.
2. Close the PiP, by pressing the **Exit** button (the actions of the five function keys along the top of the remote, correspond to a soft key visible along the bottom of the display).



## Connect to Zoom

1. Using the remote, locate the **Zoom Meeting** entry in the directory and press the green handset key on the remote control.
2. Enter the **Zoom meeting ID** followed by the #-key
3. Enter the **Zoom passcode** followed by the #-key

## Picture layout

- This is a three-screen display system – the far end will appear on the left projector screen and on the large TV monitor with the presentation showing on the right projector screen.

---

## Support

AV Technical support Townsville:

Ext. 14643

AV Technical support Cairns:

Ext. 21700

Panopto

[videocapture@jcu.edu.au](mailto:videocapture@jcu.edu.au)

Computers

Ext. 15500

A/C or electrical faults:

Mex request

Security:

Ext. 16000