

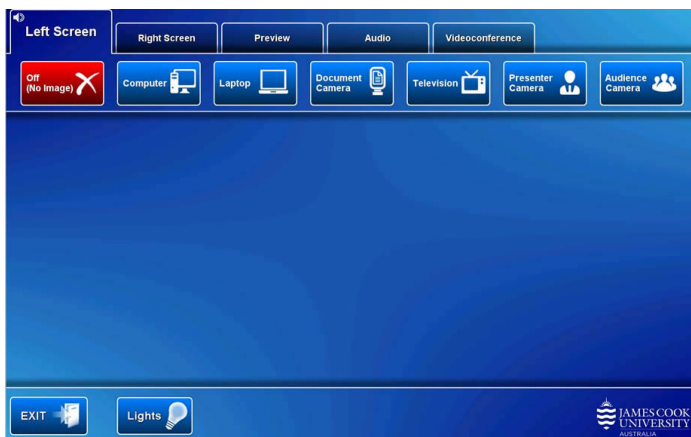
## System Components

The following equipment is connected to the AV system:

- 2x Projectors
- All-in-1 desktop PC
- Document Camera
- Lectern & Wireless microphone
- Lecture Capture (Mediasite)
- HDMI, VGA & 3.5mm audio cables – To connect Analog & Digital laptops
- Adaptors – HDMI to Mini HDMI, HDMI to Mini Display Port
- Hearing Assist Device

## Touch Panel

The touch panel is used for all interaction with the AV system



### Log in to desktop PC

Use the JCU issued username and your password

### Duplicate or Extend desktop PC display

Hold down the Windows key and press the P-key on the keyboard to access the PC display settings. Select 'Duplicate' on the floating menu. To show PowerPoint with notes, select 'Extend' from the floating menu.

## Mediasite Lecture Capture

**Audio** – the lectern and wireless microphones are permanently connected to the AV system and are used to record the presenter's voice. The wireless microphones are provided to allow for freedom of movement and recommended for all recordings.

**Presenter Video** - the presenter camera is by default selected as the recorded camera stream and changing to the audience camera will not change that. Ensure the camera is set at an angle to cover all the anticipated movements. Touch the **Preview** button and **Presenter Camera** button to make changes.

**Presentation** – touch the **Computer** or **Laptop** button to add the presentation stream to the recorder (only the presentation shown on the left projector is recorded).

## Projector and touch panel

The projectors will only take a few moments to warm up before an image appears on the projector screens after pressing a media button (Computer, Laptop, Document Camera or Television).

### Preview

Touch the **Preview** tab and a **media** button to preview it on the touch panel.

### Room lighting

Touch the **Lights** button to access the room lighting controls and adjust accordingly.

---

## Local Presentation

The same or different media can be shown on the two projectors (referenced as Left and Right) screens.

Touch the **Left Screen** tab or **Right Screen** tab to select the projector to be used.

### Show Desktop PC

Touch the **Computer** button on the touch panel to show the desktop PC on the projector screen. We recommend using the VLC media player on the desktop PC to play downloaded material.

### Show Laptop

Connect the HDMI or VGA and 3.5mm audio cables, enable the laptop's dual display (Duplicate or Mirror) and touch the **Laptop** button to show it on the projector screen.

### Show Visualizer/document camera

Turn on the document camera power and press the **Document Camera** button to show it on the projector screens. Adjust the camera zoom as required.

### Show Television

Free to air television can be shown on the projector screen by touching the **Television** button and selecting a channel to view.

### Volume control

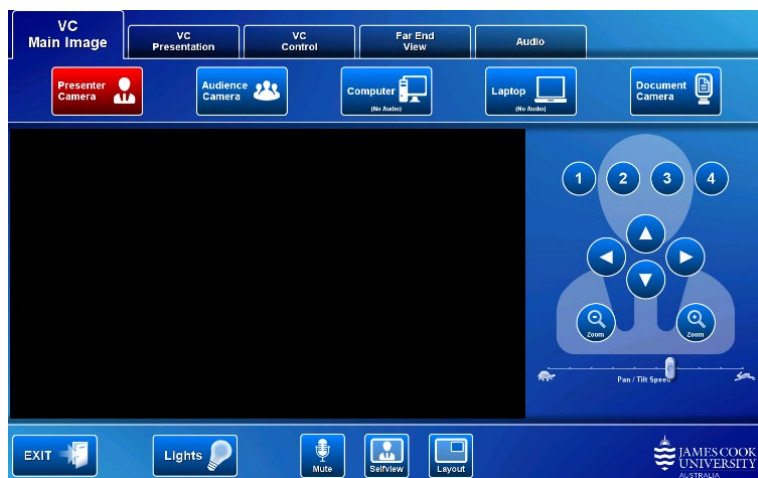
Touch the **Audio** tab to access the volume control. The audio must be routed to the projector screen where the presentation is shown.

**Microphone Volume** – touch and slide to adjust the microphone volume in the room

**Program Volume** – touch and slide to adjust the audio component of the presentation. Ensure the PC or laptop volume is turned up and not muted.

## Videoconferencing

Touch the **Videoconference** tab on the touch panel to proceed to videoconference mode. The touch panel in videoconference mode is shown in the image below.



### Select Camera

Touch the **VC Main Image** tab and **Presenter camera** button in preparation for the conference call. A view of the current camera angle is shown on the touch panel. Touch the pan, tilt or zoom buttons to adjust the camera settings to ensure the presenter is visible throughout the conference.

### Far End View

To view the far end room on the videoconference monitor, touch the **Far End View** tab on the touch panel.

### Show Presentation

Once the conference call has been connected, indicated by the far end room(s) appearing on the right projector screen, touch the **VC Presentation** tab and a **media** button to start the presentation. Refer to the Local Presentation section for how to show a presentation.

### Videoconference Volume control

Touch the **Audio** tab to access the volume control.

**Microphone Volume** – touch and slide to adjust the microphone volume in the room

**Videoconference Volume** – touch and slide to adjust the volume of the audio coming from the room(s) to which you are connected.

**Program Volume** – touch and slide to adjust the audio component of the presentation. Ensure the PC or laptop volume is turned up and not muted.

---

## Support

AV Technical support Cairns:

Ext. 21700

AV Technical support Townsville:

Ext. 14643

Mediasite content:

mediasite@jcu.edu.au

Computers:

Ext. 21777

A/C or electrical faults:

Mex request

Security:

Ext. 21293