

2023

# Postgraduate Study Guide



JAMES COOK  
UNIVERSITY  
AUSTRALIA

NO. **1**

in QLD for full-time  
employment<sup>1</sup>

NO. **1**

in the world for marine and  
freshwater biology research<sup>2</sup>

NO. **1**

in QLD for regional, rural and  
remote health professionals<sup>3</sup>

[jcu.edu.au](http://jcu.edu.au)



# Why JCU?

Explore the world of postgraduate study at JCU:

- Learn from leading industry professionals
- Be empowered to succeed with academic support
- Develop skills in the latest modern facilities
- Gain real world experience
- Achieve exceptional employment outcomes
- Benefit from small class sizes
- Connect with professional networks
- Access financial support and scholarships
- Discover great accommodation options



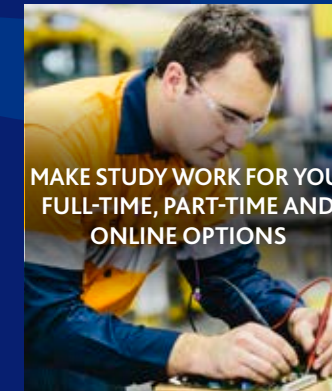
JCU DAINTREE  
RAINFOREST OBSERVATORY

TOP **25**  
UNIVERSITIES  
IN AUSTRALIA<sup>4</sup>

RESEARCH  
CONNECTIONS TO  
**124**  
COUNTRIES

**7**  
HIGHLY CITED  
RESEARCHERS<sup>7</sup>

FUTURE INVESTMENT:  
**\$1.9**  
BILLION<sup>8</sup>



MAKE STUDY WORK FOR YOU.  
FULL-TIME, PART-TIME AND  
ONLINE OPTIONS

'WORLD CLASS  
OR HIGHER'  
IN **83%**  
OF RESEARCH FIELDS<sup>9</sup>

NO. **1**  
IN QLD FOR  
FULL-TIME EMPLOYMENT<sup>1</sup>

NO. **1**  
IN THE WORLD FOR  
MARINE AND FRESHWATER  
BIOLOGY RESEARCH<sup>2</sup>

TOP **300**  
UNIVERSITIES  
IN THE WORLD<sup>4</sup>

NO. **5**  
IN THE WORLD FOR  
THE UNITED NATIONS'  
SUSTAINABLE  
DEVELOPMENT GOAL  
OF GOOD HEALTH AND  
WELLBEING<sup>5</sup>



WORLD-CLASS  
FACILITIES

NO. **1**  
IN QLD FOR  
STARTING SALARY<sup>1</sup>



THE CAIRNS INSTITUTE

**784**  
CURRENT RESEARCH  
CONTRACTS<sup>10</sup>



HANDS-ON LEARNING

AUSTRALIAN INSTITUTE  
OF TROPICAL HEALTH  
& MEDICINE

**20,308**  
STUDENT  
ENROLMENTS



JCU ORPHEUS ISLAND  
RESEARCH STATION

**4,116**  
EMPLOYEES



THE ARC CENTRE OF  
EXCELLENCE FOR CORAL  
REEF STUDIES

TOTAL RESEARCH INCOME:  
**\$67.4**  
MILLION<sup>11</sup>

SCHOLARSHIPS  
SUPPORT FOR YOUR  
SUCCESS

★★★★★  
FOR FULL-TIME  
EMPLOYMENT, STARTING  
SALARY, STUDENT  
TEACHER RATIO<sup>1</sup>

ON-CAMPUS  
ACCOMMODATION  
FOR OVER  
**1,600**  
STUDENTS



OPENING DOORS TO  
OPPORTUNITY WITH  
INDUSTRY AND RESEARCH  
THROUGH JCU CONNECT

NO. **3**  
IN THE WORLD FOR  
ECOLOGY AND  
EVOLUTION RESEARCH<sup>6</sup>



**25**  
JCU SPECIALISED  
RESEARCH CENTRES  
AND INSTITUTES

**12**  
DISTINGUISHED  
PROFESSORSHIPS

JCU'S CONTRIBUTION TO  
HUMAN CAPITAL:  
**\$1.75**  
BILLION<sup>8</sup>



JCU FLETCHERVIEW  
RESEARCH STATION

ASSETS:  
**\$1.3**  
BILLION<sup>8</sup>



# Welcome to James Cook University

*The world of postgraduate study is exciting, challenging, and takes our journey of discovery to a whole new level. It is where I experienced a real sense of the transformative power of education and its power to nourish enquiring minds and help navigate an increasingly complex world. Education also has a more practical purpose, especially in times of uncertainty. This distinctly resonates for those looking to develop advanced skills, acquire better jobs, or be the best they can be in building a rewarding career.*



So, two points to help you in your decision about where to study.

The first is to look at distinction in terms of a global presence. For over 50 years, JCU has helped create a brighter future through graduates who make a difference. We are committed to bringing together our natural world, the built environment, people and societies, and experiential learning. We do so with a view to living the United Nations' Sustainable Development Goals and in the 2022 Times Higher Education (THE) Impact Rankings JCU was ranked #5 in the world for our commitment to good health and wellbeing. Other accolades include having seven highly cited researchers<sup>1</sup>, being ranked in the world's top 25 for ecology<sup>2</sup> and being independently rated five stars for student teacher ratio<sup>3</sup>. These achievements are hard earned and a tribute to the commitment of academics and professional staff in supporting students to become well-rounded graduates.

The second point is to look at practical outcomes for postgraduate students. JCU has been independently awarded five stars for postgraduate starting salaries, and over 89% of our graduates have found full-time employment within four months of completing their

course<sup>4</sup>. There's a reason JCU graduates are in such high demand and it comes from the natural talent we help foster and grow through study that recognises the needs of students.

For some, accelerated full-time study works best. For others, a balance between work, family and other commitments. All our graduates are encouraged to manage subjects with part-time options, online or on-campus learning, or a combination that draws on the wonderful diversity that comes from the place we call home.

Thank you for taking the time to explore JCU. We look forward to working with you to create a brighter future that makes a difference.

Professor Simon Biggs  
Vice Chancellor and President

## Contents

Welcome from the Vice Chancellor .....	2	Science.....	39
<b>Our locations</b> .....	4	Society and Culture.....	42
Brisbane.....	4	Tourism.....	44
Cairns.....	6	Coursework degrees.....	45
Singapore.....	8	Research degrees .....	49
Townsville .....	10	Application and fees information.....	50
Study centre network.....	12	History of JCU.....	52
Common university terms .....	13	<b>Research excellence</b> .....	56
JCU Accommodation.....	14	Daintree Rainforest Observatory.....	58
Postgraduate degrees at JCU.....	16	Fletcherview Research Station.....	59
Research pathways.....	17	Orpheus Island Research Station.....	60
<b>Coursework degrees and qualifications</b> .....	22	Advanced Analytical Centre.....	61
Allied Health .....	18	AIMS@JCU.....	62
Biomedicine.....	20	The ARC Centre of Excellence for Coral Reef Studies.....	63
Business and Governance.....	21	Australian Institute of Tropical Health and Medicine.....	64
Education.....	26	The Cairns Institute.....	65
Engineering and Information Technology.....	28	eResearch Centre.....	66
Medicine.....	30	Ideas Lab .....	67
Nursing and Midwifery.....	32	Marine and Aquaculture Research Facility (MARF).....	68
Psychology .....	34	Contacts.....	Inside back
Public Health and Tropical Medicine.....	36		

**RESPECT.  
NOW.  
ALWAYS.**

James Cook University values and celebrates the diversity of our community, and is committed to ensuring our learning and working environment is safe and welcoming.

JCU is proud to be part of the Respect. Now. Always. campaign – a national initiative led by Universities Australia to highlight our determination to ensure our students and staff are safe from discrimination and sexual harassment. Further information about the campaign and free services available for students can be found at [jcu.edu.au/sew](http://jcu.edu.au/sew)

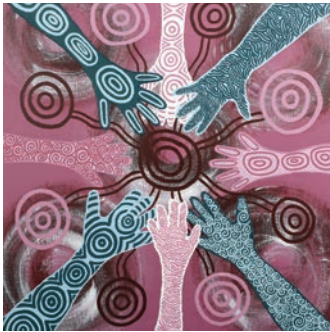


### Our commitment to Australian Aboriginal and Torres Strait Islander peoples

James Cook University is committed to building strong and mutually beneficial partnerships that work towards closing the employment, health and education gap for Australian Aboriginal and Torres Strait Islander peoples.

Our students come from many backgrounds, promoting a rich cultural and experiential diversity on campus.

*We acknowledge the Aboriginal and Torres Strait Islander peoples as the Traditional Custodians of the Australian lands and waters where our staff and students live, learn and work. We honour the unique cultural and spiritual relationship to the land, waters and seas of First Australian peoples and their continuing and rich contribution to James Cook University (JCU) and Australian society. We also pay respect to ancestors and Elders past, present and future. Aboriginal and Torres Strait Islander peoples are advised that this publication may contain names or images of people who have passed away.*



Kassandra Savage (JCU Alumni),  
'Coming Together and Respecting Difference',  
acrylic on canvas, 2014, 90cm x 90cm.

This publication is intended as a general guide for domestic students only. Prospective domestic students and all international applicants should contact the University to confirm admission requirements and the availability of courses. Information is correct at the time of printing. James Cook University reserves the right to alter any course or admission requirement without prior notice.  
CRICOS Provider code 00117J.

<sup>1</sup> 2021 Web of Science. <sup>2</sup> 2022 Global Ranking of Academic Subjects. <sup>3,4</sup> 2023 Good Universities Guide, PG study area



# JCU Brisbane

With a picturesque river precinct and an array of cultural and entertainment options, Brisbane is regarded as one of the most liveable cities in the world. JCU Brisbane students receive a world-class education in Australia's fastest growing capital city for employment.



The Goodwill Bridge, a pedestrian and cycle bridge that spans the Brisbane River, connects the South Bank Parklands to the city centre.

## JCU Brisbane

Conveniently located in a modern high-rise building in the heart of Brisbane's CBD, at JCU Brisbane you can explore a wide range of courses and find a study area that suits you.

The campus features interactive learning spaces, comfortable student lounges and a resource centre where you can network with university staff and fellow students from over 88 countries.

You'll have access to dedicated support services including opportunities for enhanced job-support, academic learning advisors, counselling, employment assistance, and English language and academic pathways.

There are also many clubs and societies you can join at JCU Brisbane, including sporting, recreational, academic and social groups. They're a great way to meet new people, learn new skills and have fun while studying.



## Brisbane fast facts

Brisbane is the capital of Queensland and the third largest city in Australia.

One of the more affordable cities in Australia, Brisbane is known for being safe and friendly.



### Climate

Summer (December–February)

21°–30°C/69°–85°F

Warm with rainy periods

Winter (June–August)

11–21°C/51.6°–69.8°F

Dry and mild

### Food

Easy access to an abundance of fresh local foods and cuisines from around the world.

### Population

1,199,384 (city), 496 (JCU)

### Transport

Bus services are available from Queen Street. Central Train Station is a 7-minute walk, and is 1 km to the riverfront.

### Places of worship

A prayer room is available on campus for student use.

### Medical

There are hospitals, medical clinics, psychology clinics and more off campus.

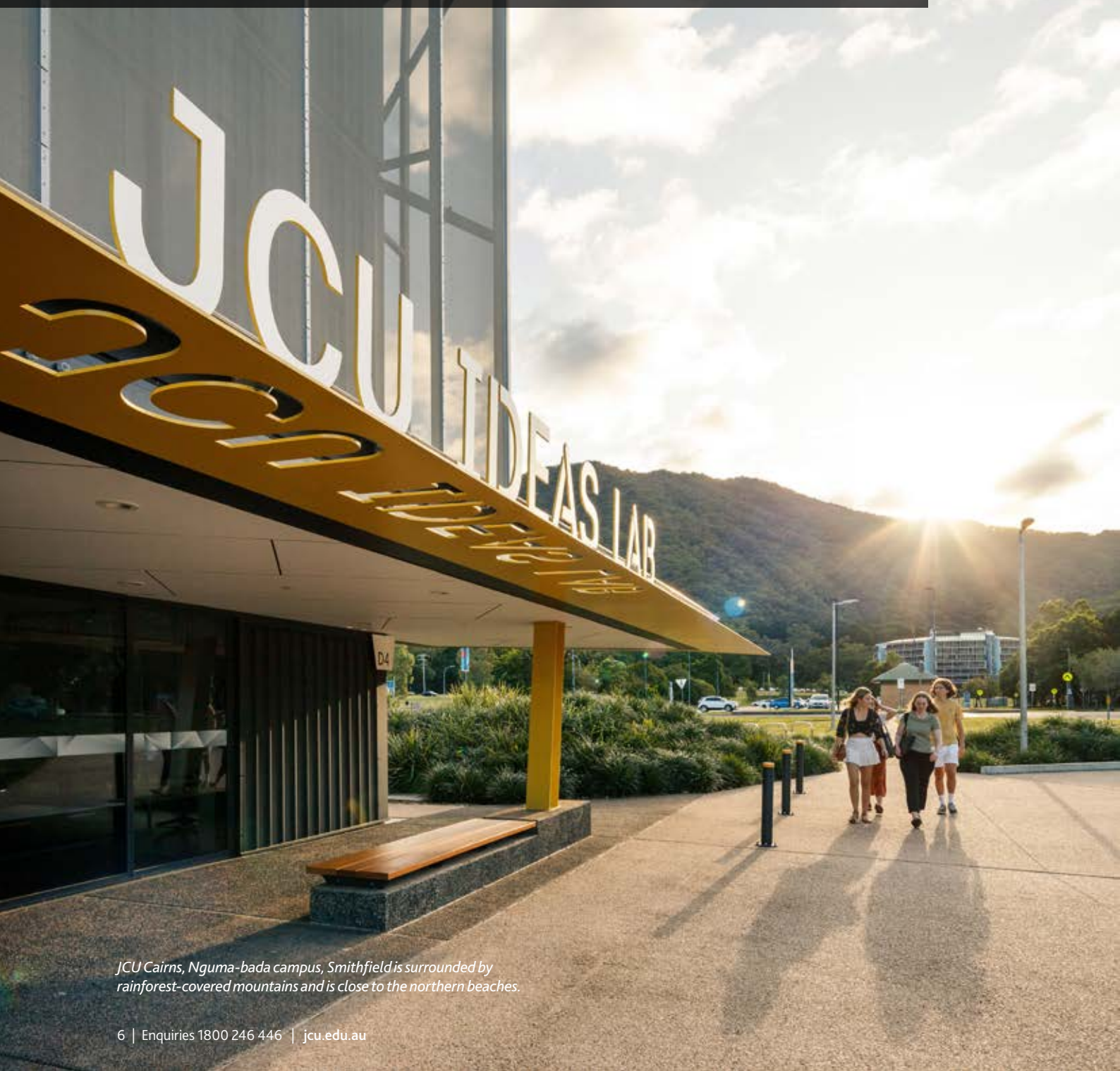
### Campus

JCU Brisbane is located in Brisbane's CBD.



# JCU Cairns

Study in some of the most interesting places on Earth. Explore unrivalled research locations and access World Heritage listed natural environments. Learn in modern facilities at Nguma-bada campus, Smithfield and Bada-jali campus, City. Build valuable professional networks while developing the skills and knowledge to make a difference.



JCU Cairns, Nguma-bada campus, Smithfield is surrounded by rainforest-covered mountains and is close to the northern beaches.

## JCU Cairns

Students at JCU Cairns are immersed in a dynamic learning environment with opportunities available for study, work, and play. With academic staff committed to student support and success, and a careers team ready to assist both during study and after graduation, students at JCU Cairns have a world of experiences available to them. In addition, there is a large number of academic and sporting clubs on offer.

JCU Cairns, Nguma-bada campus, Smithfield is conveniently located just north of the city centre. Uniquely juxtaposed between urban settings and natural wonders, the campus is surrounded on three sides by rainforest-covered mountains and is close to the northern beaches. Students enjoy a tranquil learning environment due to the abundance of lush greenery and spacious areas.

Want to study in the heart of Cairns? Located in Cairns CBD, JCU Cairns, Bada-jali campus, City offers a range of flexible study, teaching, and meeting areas. It features North Queensland's first 'moot court' with e-court facilities providing practical training for law students. Access to videoconferencing and catering facilities in the boardroom gives staff and students opportunities to meet and network with businesses and the local community.

Studying in Cairns provides access to two World Heritage listed natural environments – the Great Barrier Reef Marine Park and the Wet Tropics ancient rainforests. Students can develop specialised skills during field trips and expeditions to distinctive research locations.

The variety of natural wonders coupled with a tropical climate make Cairns an ideal place for active outdoor living. The city is a great base for exploring the nearby resort regions of Port Douglas and Mission Beach, the picturesque Atherton Tablelands, and outback Queensland.



Cairns city, overlooking Trinity Bay.

## Cairns fast facts

Cairns is a gateway to the Great Barrier Reef, the Wet Tropics rainforests in the Daintree National Park, the Atherton Tablelands, and the Gulf Savannah region, so you'll never run out of places to enjoy and explore.



### Climate

Wet season (November–May)  
24°–32°C/75°–90°F  
Hot, rainy and humid  
Dry season (June–October)  
17°–26°C/63°–79°F  
Mild and dry

### Food

Easy access to an abundance of fresh local food and cuisines from around the world.

### Population

240,190 (city), 3,147 (JCU)

### Transport

Bus to and from campus, car, bicycle (extensive network of bike tracks throughout Cairns), international airport.

### Places of worship

JCU's Multifaith Chaplaincy Centre is available as a free facility for you to practise your faith.

### Medical

On-campus dental clinic, as well as a hospital, medical clinics, psychology clinics, and more off campus.

### Campus

JCU Cairns, Nguma-bada campus, Smithfield, near the popular northern beaches and approximately a 20-minute drive from the city centre. Study facilities can also be accessed at the JCU Cairns, Bada-jali campus, City.

### On-campus sport

Gymnasium, basketball courts, sporting fields, and a world-class mountain bike track.



# JCU Singapore

A constantly evolving city, Singapore is at the forefront of global health, technology, and economic advancement. JCU Singapore features modern facilities, collaborative learning spaces, and internationally renowned lecturers.

[jcu.edu.sg](http://jcu.edu.sg)

## JCU Singapore

JCU Singapore was established in 2003, bringing programs direct from Australia and resident senior academic staff from JCU to ensure academic quality. JCU Singapore has achieved the highest level of accreditation from the Singapore Government, the EduTrust Star.

JCU Singapore offers a wide range of courses including business, education, environmental science, game design, hospitality and tourism management, and healthcare sciences.

Students have opportunities to study in Australia with the Inter-campus Mobility Program, as well as overseas with the Study Abroad Program.

Singapore is a distinctive, thriving place. With a total land area of just 646 square kilometres, it is a compact city-state brimming with the vibrancy of over 5 million people. As the largest port in Southeast Asia, Singapore is one of the busiest ports in the world and the city-state excels in trade and tourism. You will find a diverse population of Chinese, Malay, Indian, and other ethnic groups, covering a wide spectrum of religions, cultures, and languages. The synergistic mix of ethnic groups offers international students and visitors a wide range of choices for living, working, studying, and discovering in Singapore.

## Singapore fast facts

As an ever-evolving city, Singapore is at the forefront of global health, technology and economic advancement.



### Climate

Dry season (March–August)

25°–32°C/77°–90°F

Wet season (September–February)

24°–32°C/75°–90°F

### Food

There is easy access to fresh fruit, vegetables, meat, and seafood. Singapore enjoys a large range of ethnic cuisines, as well as plenty of vegetarian, vegan, and halal options.

### Population

5.45 million (city), 4,066 (JCU)

### Transport

Two MRT (train) stations are a 10-minute walk from campus, and there are three bus stops within short walking distance to the campus.

### Places of worship

A prayer room is available for students to use.

### Medical

On-campus facilities include the JCU Singapore Psychology Clinic. There is a hospital 15 minutes from the campus, as well as several medical clinics around the city.

### Sporting facilities

A wide range of sporting facilities are on campus, including a gymnasium, basketball and tennis courts, and a multi-purpose sports hall.

Sources: Department of Statistics Singapore 24/03/2022;  
2021 JCU numbers as per COGNOS 24/03/2022

Please note: Information is subject to change | 9





# JCU Townsville

Study in a unique environment where world-class facilities, natural wonders, and vibrant student life come together. JCU Townsville is a teaching, research, and community hub with a range of state-of-the-art equipment and resources for you to make the most of your time at university across two campuses: Bebegu Yumba campus, Douglas and the City campus.

## JCU Townsville

Students access exceptional teaching and research facilities at JCU Townsville. Develop professional skills, engage with peers, and learn from leading lecturers at JCU Science Place. The world-class facility features sophisticated teaching areas, collaborative lecture theatres, technology-enabled active learning spaces, and fully equipped research labs. Students can also access research facilities and learning support services at the Eddie Koiki Mabo Library. The library hosts exhibitions, providing opportunities to access and appreciate different artworks and artefacts. Students enjoy a rich social life and can join a range of clubs and societies. From sports through to culture, there is a club to suit any interest.

JCU Townsville, Bebegu Yumba campus, Douglas is surrounded by natural bush and parkland. The campus houses around 1,400 students in colleges and halls of residence.

Immerse yourself in the heart of Townsville at the JCU Townsville, City campus. Located in Townsville's CBD and boasting a range of innovative spaces and state-of-the-art facilities, the City campus delivers services for the university, students, businesses, and community organisations.

Townsville is small enough to escape the hustle and bustle of big city life, but large enough to boast a range of facilities. Students can make the most of the great outdoors through rainforest hikes, mountain biking, and snorkelling or scuba diving on the Great Barrier Reef.

## Townsville fast facts

Townsville is Australia's largest tropical city and a thriving coastal port. Magnetic Island and the Great Barrier Reef are on Townsville's doorstep. The Gulf Savannah region and outback country towns lie to the west. Townsville is famous for an average of 320 days of sunshine per year, so there are endless opportunities to enjoy the outdoors.



### Climate

Summer (December–February)  
24°–32°C/75°–90°F  
Hot and humid  
Winter (June–August)  
13°–26°C/56°–79°F  
Mild and dry

### Food

Easy access to an abundance of fresh local foods and cuisines from around the world.

### Population

229,031 (city), 11,726 (JCU)

### Transport

Bus to and from campus, car, bicycle, international airport.

### Places of worship

JCU's Multifaith Chaplaincy Centre is available as a free facility for you to practise your faith.

### Medical

On-campus hospital, medical clinic, psychology clinic, physiotherapy clinic, dental clinic, occupational therapy clinic, speech pathology clinic, exercise physiology clinic, and veterinary clinic.

### Banks

Westpac, Commonwealth Bank, and RediATM facilities on campus.

### Campus

JCU Townsville, Bebegu Yumba campus, Douglas, is Australia's largest university campus, approximately a 20-minute drive from the city centre. Study facilities can also be accessed at the Townsville City campus.

### On-campus sport

Gymnasium, basketball courts, tennis courts, squash courts, netball courts, rugby and soccer fields, hockey fields and cricket pitches.

Sources: ABS 2016 (SA4 areas) (latest available); 2021 JCU numbers as per COGNOS 24/03/2022



Townsville city, from Castle Hill, overlooking Cleveland Bay and east to Magnetic Island.



# Study centre network

*Our university campuses are supported by a network of study centres, clinical schools and field stations. This geographical spread helps us further our commitment to help regional and remote communities gain access to high quality education.*

## JCU Mackay

JCU Mackay has two campuses – one at the JCU Mater Clinical Training Centre in the Mater Hospital and another at the JCU Mackay Clinical School, within the Mackay Education Research Centre of Mackay Base Hospital.

These campus locations provide students with opportunities for hands-on learning and clinical experience in nursing and pharmacy.

Mackay is a vibrant tropical city with a population of 125,000, situated approximately 1,000 kilometres north of Brisbane. With thriving industries in tourism, agriculture and mining, it is one of Queensland’s most accessible regional destinations.

## JCU Mount Isa

JCU’s Centre for Rural and Remote Health at the Mount Isa, Murtupuni campus provides access to health education for the remote west region of Queensland. In the Kalkadoon language, murtupuni means ‘come together, gather together’.

Students can study a Bachelor of Nursing Science based in Mount Isa, or complete a clinical placement in the region as part of other health studies. The centre facilitates research and education for rural, remote and Indigenous health issues and provides students with unique rural experiences. Students can learn in lectures delivered by experts from all over Queensland, and connect with experienced local health professionals in tutorials.

## JCU Thursday Island

JCU is committed to research that improves the health of people and communities in the Tropics worldwide.

The Australian Institute of Tropical Health and Medicine at the Thursday Island, Ngulaigau Mudh campus is one place that makes this commitment possible. Ngulaigau mudh means ‘house of knowledge’ in the dialect of the Kala Lagaw Ya, a traditional language of the Torres Strait.

The facility provides both learning and research facilities for JCU students, and a community space for engagement and collaboration with the Torres Strait community.

## JCU Rockhampton

JCU Rockhampton is located in a modern building in the heart of the city. Postgraduate students can access the facilities as part of JCU’s GP Training Program.

The JCU GP Training Program provides clinicians the opportunity to expand their scope of practice through working in private clinics and hospitals where they’ll gain experience treating a range of conditions in low-resource settings.



# Common university terms

Even with previous university experience, a little refresher on terminology can come in handy. We’ve put together a list of some of the more common terms you’re likely to come across while exploring your study options.

### Academic record

An official record of your academic achievements, including your transcript and testamur.

### Carousel format

A flexible study mode with condensed subjects completed one at a time in six study periods during the year.

### Census date

The deadline within each study period or research period for students to finalise enrolment in, or withdraw from, a subject before fees are incurred.

### Commonwealth supported place

A study place where your tuition fees are subsidised by the Australian Government. JCU offers Commonwealth supported places for eligible students for a range of postgraduate degrees.

### Credit for previous study

Recognition of studies already completed at other tertiary institutions that can count as credit points towards your course at JCU. It may also be referred to as ‘advanced standing’ or ‘recognition of prior learning’.

### Credit points

A basic measure of study load for each subject, with most subjects at JCU carrying a unit value of three credit points. A typical full-time study load for one academic year is 24 credit points (eight subjects), while part-time is generally no more than 75 percent of a full-time study load.

### Grade point average (GPA)

An academic performance metric, calculated as the weighted average of the final grades achieved in all subjects, relative to the credit point value for each subject.

### Graduate Certificate

A postgraduate academic qualification, typically requiring six months to one year of full-time study or part-time equivalent to complete.

### Graduate Diploma

A postgraduate academic qualification, typically requiring one to two years of full-time study or part-time equivalent to complete.

### Handbook

Official and central source of information for all courses and subjects offered by JCU.

### Higher degrees by research (HDR)

A postgraduate study program with at least two thirds of the overall course duration spent undertaking supervised research and producing a thesis.

### Intake

The time of year that you can start your degree, usually the start of a semester or trimester.

### Major

A defined sequence of subjects within a degree that deepens your experience in a particular discipline.

### Orientation

Often referred to as O-Week, it is designed to welcome new students and provide information about your course, the campus and the range of services available.

### Postgraduate study

An advanced level academic program that usually requires students to have successfully completed relevant undergraduate study to qualify.

### Prerequisite

An academic qualification that you must complete before starting your postgraduate degree or taking a higher-level university subject.

### Professional placement

Training and experience in a professional work environment that is part of your degree, designed to extend your knowledge and practical skills. It may also be referred to as ‘work integrated learning’.

### Research period

The academic year for research students at JCU includes four overlapping research periods. Start dates are spaced around 3 months apart and the duration of each period is around 6 months.

### Semester

A study period of around 13 weeks duration, with the academic year divided into two study periods.

### Study load

The number of subjects and associated credit points you take on per study period.

### Study period

The period of time during which all aspects of coursework study is completed, including reading and preparation, lectures, tutorials, practical sessions and assessment.

### Subjects

The building blocks of coursework study, each carrying a unit value in credit points that count towards a degree.

### Testamur

A certificate issued when you graduate, which includes your name, details of the completed degree and majors where applicable, plus the date it was issued.

### Thesis

The work submitted for assessment after a period of supervised independent research, commonly required to complete a research-based postgraduate degree.

### Transcript

A complete record of your studies at a university, including all units of study and your grade for each.

### Trimester

A study period of around 10 weeks duration, with the academic year divided into three study periods.

### Tuition fee

The cost to study a full-fee degree without any subsidies applied, excluding student services fees and other incidental expenses.

### Undergraduate study

An academic program of study leading to a Certificate, Diploma, Bachelor degree or Bachelor (Honours) degree.



# JCU Accommodation

Whether you need somewhere to stay for a block-mode subject or for the duration of your course, there is a range of options available at JCU.

## Living on campus

Living on campus is a great way to make the most of your time at JCU. There are five different accommodation options at JCU Townsville, Bebegu Yumba campus, Douglas, including the brand new 403-bed Burralga Yumba residence. There are two options in Cairns, including the 300-bed John Grey Hall residence at JCU Cairns, Nguma-bada campus, Smithfield.

All rooms at our on-campus residences are single board, with a bed, study desk, chair, fan, air-conditioning and WiFi. Each residence is different in regards to style of living, culture and atmosphere. There are options for fully-catered or self-catered housing. You can take virtual tours of each residence at [jcu.edu.au/accommodation](https://jcu.edu.au/accommodation)

Living on-campus is so much more than just a room. It is a safe, secure and fun way to transition into university life. Each of our residences provides academic, wellbeing and social support.

Your safety and security are a priority. Each bedroom has an individual lock that only you and our staff can access. After-hours access to any buildings on residence can only be accessed by residents living there. We have CCTV cameras throughout the buildings. JCU Security are on campus and patrol the grounds 24/7, and are able to escort you back to your residence if you are studying late at night.

Relocating to attend university is a big thing. Our on-campus team are here to support you through your transition to university life. They are there to talk to you when you need support, check on you to ensure that you are coping OK, and make sure that your health and wellbeing are on track for you to achieve your academic goals. To assist with your studies, you can form study groups and our team are able to provide academic support.

One of the most important things when you are moving somewhere new is making new friends to share your experiences with. Isolation and loneliness can have a significant impact on your mental health and academic success. During your first week on campus you will complete an orientation process. This is your opportunity to meet new people, and to learn about on-campus facilities, support resources and local amenities such as public transport, shops and medical services. There are lots of fun social activities happening all year round including movie nights, sporting events, international festivals, outings and musical showcases.

Applications to live on campus are now open. You can apply for on-campus housing at [jcu.edu.au/accommodation](https://jcu.edu.au/accommodation)



## Living off campus

Off-campus housing can come in the form of sharing a house with other students, purpose-built student accommodation or renting an entire property.

Before committing to a property or room off-campus, please be sure to:

- Check what you are getting is part of your lease. Even though images show the property with furniture, they may have been put there for marketing purposes only.
- Check the dates and length of time you are committing to. You will be signing a legal document, which you may not be able to break because you have changed your mind.
- Check the location of the property to the proximity to the University campus, bus stops and amenities.

You can contact the JCU Accommodation team for any support, or to answer any questions you have in relation to the property or location you are considering living in during your time at JCU.



The new Burralga Yumba residence on-campus at JCU Townsville

## Homestay

A homestay is when you are matched with a family in the local area to live with. All homestay hosts have been screened by JCU's homestay provider, and are required to undergo training in order to provide a high level of service and comfort to the student. More information is available at [jcu.edu.au/homestay](https://jcu.edu.au/homestay)

## Transport

Both JCU Townsville and JCU Cairns are located about 20 minutes from the airport. Buses don't run from the airports, however taxis and rideshare companies are available. A bus from the centre of town to each University campus will take about 30 minutes. Buses run regularly. You can view the timetables at [sunbus.com.au](https://sunbus.com.au)

## Further information

[jcu.edu.au/accommodation](https://jcu.edu.au/accommodation)  
accommodation@jcu.edu.au  
T 07 4781 4148  
T (International) +61 7 4781 4148



*“Living at Saints has been a highlight of my JCU experience so far! I’ve formed connections and made friends with many like-minded students through social activities and mealtimes. I love the convenience of having only a short walk to the university and all the facilities available on campus.”*

**Josephine Oehler**  
STUDYING BACHELOR OF MEDICINE, BACHELOR OF SURGERY







# Research pathways

There are many different avenues available to make your way into a research degree at JCU.

These depend on the type of undergraduate degree you completed, whether it included an Honours year with a research project or if you’ve completed other postgraduate study with a research component.

If you’re new to research and need the essential skills, our pathway courses can get you started.

All are designed to help ease you into academic research and give you the experience and qualifications to progress to a research-based Master degree or Doctorate.

## TROPICAL ENVIRONMENTS AND SOCIETIES

### Graduate Certificate of Research Methods

**Fees:** \$4,010<sup>1</sup> total, Commonwealth supported  
OR \$15,080<sup>1</sup> total, full-fee tuition

#### WHAT TO EXPECT

- Learn how to create a research proposal and conduct a literature review to an academic standard. Be ready to pursue a career in research or apply your research skills in a professional context.
- Take the first steps towards a research-based Master degree or PhD at JCU, with a focus on humanities, environmental management, global development, history, education, business, law, finance or tourism in a tropical context.



### Graduate Diploma of Research Methods

**Fees:** \$8,020<sup>1</sup> per year full-time, Commonwealth supported  
OR \$30,170<sup>1</sup> per year full-time, full-fee tuition

#### WHAT TO EXPECT

- Gain the skills and experience to excel in research. Learn how to create a research proposal and conduct a literature review to an academic standard.
- Undertake a small-scale research project to develop your potential as a professional and effective researcher and produce a thesis to communicate your findings.



## TROPICAL HEALTH AND MEDICINE

### Graduate Certificate of Research Methods

**Fees:** \$4,010<sup>1</sup> total, Commonwealth supported  
OR \$15,080<sup>1</sup> total, full-fee tuition

#### WHAT TO EXPECT

- Complete a guided research project to develop key research skills including literature review, proposed rationale, methods, ethics applications and data collection and analysis.
- Graduate with the skills necessary for taking on a higher degree by research, with the advantage of learning in a specific tropical health and medicine context.



### Graduate Diploma of Research Methods

**Fees:** \$8,020<sup>1</sup> per year full-time, Commonwealth supported  
OR \$30,170<sup>1</sup> per year full-time, full-fee tuition

#### WHAT TO EXPECT

- Develop the fundamental skills, strategies and methods for planning, implementing and completing an independent research project in a field of animal or human health.
- Complement your research with elective subjects in areas including public health research, qualitative research methods, epidemiology, biostatistics and more.



<sup>1</sup> Study fees estimated at time of printing. Student services and amenities fees also apply per subject, capped per year.

# Postgraduate degrees at JCU

*Degrees at the postgraduate level may either be focused on coursework or research.*

## Coursework

Coursework involves taking a selection of subjects, potentially including a study major in a similar structure to undergraduate degrees. Qualifications in this format include Graduate Certificates, Graduate Diplomas and Master degrees.

Some of JCU’s postgraduate courses are ‘nested’, meaning you can complete a Graduate Certificate on its own, or gain credit to apply towards a Graduate Diploma or Master in the same program. Alternatively, if you’re enrolled in a Master degree and want to change direction, you may have the option to leave with a Graduate Certificate or Graduate Diploma if you’ve completed the required subjects.

This flexibility can make the commitment of postgraduate study more manageable. If you are aiming to learn more in your current professional field of study or expand into a related discipline, coursework degrees can help you to develop your expertise and understanding and achieve more in your career.

## Research

Research degrees, also known as higher degrees by research (HDR), involve a program of supervised, original research in a chosen discipline. You’ll learn independently, with no lectures or classes to attend.

Qualifications include Master of Philosophy, Doctor of Philosophy and Professional Doctorates, which can help you progress into academia or build on your professional capabilities with high-level research.

### Master of Philosophy (MPhil)

This type of Master degree is designed to help you develop the specialised knowledge and research skills to pursue further research qualifications or a career in research.

### Doctor of Philosophy (PhD)

A PhD primarily involves completing supervised research and an original thesis that contributes to the body of knowledge within a field of study and the potential for advancement in an industry or discipline.

### Professional Doctorate

While a PhD focuses on academic research, this style of doctorate is designed for experienced professionals to add to the understanding of best practices in their industry and further their professional development.



# Allied Health

JCU Allied Health is a leader in improving the wellbeing of individuals and communities. JCU graduates have strong expertise and advanced practical skills, empowering them to make a difference.

#1 in Queensland

for full-time employment

Good Universities Guide 2023, PG Health Services & Support

#1 in Queensland

for median graduate salary

Good Universities Guide 2023, PG Health Services & Support

Five stars

for learning resources

Good Universities Guide 2023, PG Health Services & Support



“The Master of Rehabilitation enabled me to gain a deeper level of insight into a wide range of local community, state, and national level public health priorities/problems that influence the development and delivery of health programs, and the overall population health of its people.”

**Madeline Mathews**  
MASTER OF REHABILITATION ALUMNA  
MAJORING IN OCCUPATIONAL THERAPY

## Master of Clinical Exercise Physiology

**Fees:** \$14,630<sup>1</sup> per year full-time, Commonwealth supported  
OR \$26,280<sup>1</sup> per year full-time, full-fee tuition

### WHAT TO EXPECT

- Devise and deliver exercise programs for individual clients via an evidenced-based and holistic approach. Learn to assess and treat individuals with chronic conditions.
- Sharpen your professional skills with 360 hours of practical placements in a range of locations, including rural, remote and regional communities.
- Assess and apply your knowledge to a range of physical circumstances as you develop an expert understanding of the mechanisms of human movement.



## Graduate Certificate of Diabetes Education

**Fees:** \$2,496<sup>1</sup> total, Commonwealth supported  
OR \$11,835<sup>1</sup> total, full-fee tuition

### WHAT TO EXPECT

- Develop your skills in advocating for diabetes prevention, providing self-management education and improving health outcomes for individuals and communities.
- Explore key subject areas of health education relating to clinical diabetes. Apply your knowledge during professional placements alongside leading industry professionals.



## Graduate Certificate of Infection Control

**Fees:** \$3,655<sup>1</sup> total, Commonwealth supported  
OR \$12,270<sup>1</sup> total, full-fee tuition

### WHAT TO EXPECT

- Gain the skills to design, implement, and evaluate infection management strategies and control procedures within hospitals and other healthcare settings.
- Develop the specialised knowledge and technical skills needed to find solutions to complex problems and manage healthcare risks.



## Graduate Certificate of Rehabilitation

**Fees:** \$4,010<sup>1</sup> total, Commonwealth supported  
OR \$14,220<sup>1</sup> total, full-fee tuition

### WHAT TO EXPECT

- Develop your skills to design, manage and evaluate rehabilitation plans for individuals and communities in culturally diverse populations.
- Learn to develop solutions for complex problems in health professional practice.

### MAJORS

- General
- Occupational Therapy
- Physiotherapy
- Speech Pathology



## Graduate Diploma of Rehabilitation

**Fees:** \$28,440<sup>1</sup> per year full-time, full-fee tuition

### WHAT TO EXPECT

- Expand your rehabilitation knowledge and skills through a program of pure coursework or a combination of coursework and a research project.
- Discover new approaches in teaching and learning in clinical contexts, educational technologies, assessment, curriculum design and research, relevant to your career in health.

### MAJORS

- General
- Occupational Therapy
- Physiotherapy
- Speech Pathology



## Graduate Diploma of Rural Generalist Practice

**Fees:** \$26,100<sup>1</sup> per year full-time, full-fee tuition

### WHAT TO EXPECT

- Advance your academic and clinical expertise in delivering rural and remote health services more effectively in low-resource settings. Develop your leadership, research, and patient management skills to respond to diverse healthcare needs.
- Choose to focus on diabetes education, dietetics, occupational therapy, pharmacy, physiotherapy, podiatry, psychology, social work or speech pathology.



## Master of Rehabilitation

**Fees:** \$28,440<sup>1</sup> per year full-time, full-fee tuition

### WHAT TO EXPECT

- Create assessment, management and evaluation plans across the human lifespan, for culturally and demographically diverse peoples. Benefit from a focus on tropical, rural, remote and Indigenous communities.
- Choose from a coursework degree or incorporate a research element to open doors to a future PhD. Broaden your understanding of rehabilitation, chronic conditions, evidence-based practice and cultural principles.
- Design, analyse, and ethically implement research. Critically reflect on the implications of research findings for clinical practice.

### MAJORS

- **General** - Learn new skills to help individuals recover from illness and injury and apply your advanced knowledge to your current practice.
- **Occupational Therapy** - Advance your rehabilitation skillset to assist individuals in overcoming barriers to their everyday activities.
- **Physiotherapy** - Deepen your knowledge and advance your physiotherapy skills to assist clients with their rehabilitation journey.
- **Speech Pathology** – Assist individuals with communication and swallowing-related issues and support them through rehabilitation into daily life.



<sup>1</sup> Study fees estimated at time of printing. Student services and amenities fees also apply per subject, capped per year.

<sup>2</sup> Part-time study mode only.

<sup>3</sup> Requires some on-campus attendance.

<sup>1</sup> Study fees estimated at time of printing. Student services and amenities fees also apply per subject, capped per year.

<sup>2</sup> Part-time study mode only.

<sup>3</sup> Requires some on-campus attendance.



# Biomedicine

JCU Biomedicine is a leader in experiential learning. Highly valued by employers, JCU graduates are at the leading edge of health and the human body.

**#1 in Queensland**  
for overall education experience  
Good Universities Guide 2023, PG Medicine

**#1 in Australia**  
for learning resources  
Good Universities Guide 2023, PG Medicine

**#1 in Queensland**  
for student support  
Good Universities Guide 2023, PG Medicine

# Business and Governance

JCU Business and Governance provides accredited training with a focus on innovative, evidence-based and sustainable change. Graduates are empowered to become the next generation of leaders and managers in these rapidly changing sectors.

**#1 in Queensland**  
for full-time graduate employment  
Good Universities Guide 2023, PG Business & Management

**#1 in Queensland**  
for median graduate salary  
Good Universities Guide 2023, PG Business & Management

**Flexible delivery**  
Make study work for you

## Graduate Diploma of Medical Science

**Fees:** \$11,400<sup>1</sup> per year full-time, Commonwealth supported  
OR \$33,600<sup>1</sup> per year full-time, full-fee tuition

### WHAT TO EXPECT

- Apply recognised methods and tools of medical science to the process of enquiry and discovery, particularly in clinical and medical investigations.
- Develop strong skills in communicating information to those with and without a medical or scientific knowledge base.

### MAJORS

- Clinical Sciences
- Medical Laboratory Science



## Master of Medical Science

**Fees:** \$30,160<sup>1</sup> per year full-time, full-fee tuition

### WHAT TO EXPECT

- Develop and apply advanced knowledge in biomedical, medical laboratory and clinical measurement science. Learn how to improve human and animal health in rural, remote and Indigenous community settings.
- Study a specialised major and learn from industry professionals in JCU's custom laboratories. Network and form professional relationships with potential future employers.
- Conduct an independent research project on a significant topic and present your findings to postgraduate peers, academics and researchers.

### MAJORS

- **Clinical Sciences** - Explore fundamental issues of cardiac, respiratory, sleep, renal and neurological measurement, analysis, and interpretation. Complete a full year of clinical rotations in professional medical or clinical science laboratories.
- **Future Leaders in Tropical Research** - Diagnose major parasite groups, develop immunology experiments and design research proposals in this flexible major. Choose between a specialisation in Biochemistry, Microbiology and Immunology, or Physiology and Pharmacology, plus electives based on your professional interests.
- **Medical Laboratory Science** - Become a multidisciplinary scientist and study clinically specialised streams: Haematology, Clinical Biochemistry, Histology and Cytology, Microbiology and Immunology and Immunohaematology. Apply your theoretical knowledge during professional placements in diagnostic medical laboratories.



## Master of Professional Accounting

**Fees:** \$28,160<sup>1</sup> per year full-time, full-fee tuition

### WHAT TO EXPECT

- Build your theoretical and technical accounting knowledge across auditing and assurance, finance, economics, quantitative methods and information systems, along with commercial, corporation and taxation law disciplines.
- Use accounting models and techniques to critically analyse complex contemporary business issues and make informed recommendations.
- Develop your professional judgement and the ability to provide advice with confidence. Demonstrate your understanding through an applied research project.



## Master of Professional Accounting – Master of Business Administration

**Fees:** \$28,160<sup>1</sup> per year full-time, full-fee tuition

### WHAT TO EXPECT

- In your Master of Professional Accounting, build your accounting knowledge in auditing and assurance, finance, economics, quantitative methods and information systems, along with commercial, corporation and taxation law disciplines. Develop your professional judgement and the ability to provide advice with confidence.
- In your Master of Business Administration, develop advanced management skills and learn how to successfully analyse, plan and implement decisions in the workplace. Be exposed to a broad range of disciplines, learn from leading business experts, and benefit from highly influential networking.



## Graduate Certificate of Business Administration

**Fees:** \$7,315<sup>1</sup> total, Commonwealth supported  
OR \$14,080<sup>1</sup> total, full-fee tuition

### WHAT TO EXPECT

- Develop your knowledge and skills in people management, accounting, international business and marketing as the four main disciplines of business administration.
- Learn about sustainable business practices, performance methods and approaches to address complex business and professional practice problems.



## Master of Business Administration

**Fees:** \$28,160<sup>1</sup> per year full-time, full-fee tuition

### WHAT TO EXPECT

- Develop your knowledge across a broad range of disciplines, including economics, marketing, international business and entrepreneurship.
- Learn from leading business experts in modern governance and sustainable business practices. Develop real-world professional networks through links to industry and government agencies.
- Apply your knowledge of research principles, methods, techniques and tools to solve business and professional practice problems.

<sup>1</sup> Study fees estimated at time of printing. Student services and amenities fees also apply per subject, capped per year.



# Business and Governance

JCU Business and Governance provides accredited training with a focus on innovative, evidence-based and sustainable change. Graduates are empowered to become the next generation of leaders and managers in these rapidly changing sectors.

**#1 in Queensland**  
for full-time graduate employment  
Good Universities Guide 2023, PG Business & Management

**#1 in Queensland**  
for median graduate salary  
Good Universities Guide 2023, PG Business & Management

**Flexible delivery**  
Make study work for you

BUSINESS AND GOVERNANCE

## MAJORS

• **Analytics and Business Solutions** - Identify trends, patterns and relationships through data to give insight into business performance and market dynamics. Learn to manage information, interpret statistics and develop practical decision models.

• **Conflict Management and Resolution** - Learn how to guide others through conflict to reach a mutually beneficial agreement. Understanding and apply different conflict management styles for effective resolution services in multiple settings and contexts.

• **Creative Marketing** - Explore how e-strategic management, analytics and innovation can help your brand thrive. Learn to creatively engage your audience through advertisement campaigns and customer experiences.

• **Economic Resilience** - Discover the underlying forces that drive resilience in social-economic systems. Learn how to analyse their resistance to change and capacity for recovery.

• **Entrepreneurship** - Learn how to identify ideas with potential and develop them for real-world applications. Understand the strategies and operational requirements relevant to new ventures and ways to pursue business goals.

• **Finance** - Study funds management, financial markets and risk management. Understand management approaches used in financial institutions including commercial banks, rural cooperatives and microfinance operations.

• **Global Talent Management** - Discover ways to manage organisational change and address contemporary issues in human resource management. Learn about HR analytics, employee experience management, tax and legal compliance.

• **Leadership** - Develop management and leadership skills to operate businesses in highly competitive environments, manage finances and resources, solve complex organisational problems, plan effectively and hire the right employees.

• **MICE, Tourism and Hospitality** - Gain the professional expertise to manage, plan, and market products and experiences in the food, recreation, events, accommodation and tourism industries.

• **Project Management** - Develop vital skills in linear planning, leadership and management, and risk assessment. Build your expertise to deliver complex projects for business, government and the community.

## Graduate Certificate of Business Administration Global

**Fees:** \$14,080<sup>1</sup> total, full-fee tuition

### WHAT TO EXPECT

• Further your career with practical knowledge of global perspectives, data-driven decision making and organisational leadership you can take into your workplace.

• Take the next step towards a Master of Business Administration at a pace that suits you.

<sup>1</sup> Study fees estimated at time of printing. Student services and amenities fees also apply per subject, capped per year.

<sup>2</sup> Part-time study mode only in Townsville and Brisbane. Can be completed in 4 months full-time in Singapore.

<sup>3</sup> Townsville, Brisbane and online students may take fewer subjects to complete in 1.5 years full-time if additional study prerequisites are met.

<sup>4</sup> Can be completed in 1 year full-time in Singapore.

<sup>5</sup> Available in Townsville only when additional study prerequisites are met. Check the course page on the JCU website for details.

**LEGEND**  JCU Cairns  JCU Townsville  JCU Mackay  JCU Mt Isa  JCU Singapore  JCU Brisbane  Study online  Start Semester 1  Start Semester 2  Trimester intake  Carousel format: Subjects completed one at a time, max 6 per year.  Course duration in years  Professional placements  Professional accreditation  Field trips



*“My professional development has benefited from the MBA in a number of ways, from applying new knowledge to my management role at the time to enabling me to think more strategically about the business. The lecturers connected us with emerging leaders in the business community, providing valuable network opportunities.”*

**Ken Hooper**

BUSINESS DEVELOPMENT MANAGER, BLUESCOPE AUSTRALIA  
MASTER OF BUSINESS ADMINISTRATION ALUMNI



# Business and Governance

JCU Business and Governance provides accredited training with a focus on innovative, evidence-based and sustainable change. Graduates are empowered to become the next generation of leaders and managers in these rapidly changing sectors.

#1 in Queensland

for full-time graduate employment

Good Universities Guide 2023, PG Business & Management

#1 in Queensland

for median graduate salary

Good Universities Guide 2023, PG Business & Management

Flexible delivery

Make study work for you

## Graduate Diploma of Business Administration Global

Fees: \$28,160<sup>1</sup> total, full-fee tuition

### WHAT TO EXPECT

- Gain the skills to make impactful strategic decisions in global contexts, solve business problems through data and develop the knowledge to lead teams.
- Connect and collaborate with like-minded students from a wide range of organisations and industries.



## Master of Business Administration Global

Fees: \$42,240<sup>1</sup> total, full-fee tuition

### WHAT TO EXPECT

- Develop a deeper understanding of global markets to better inform your business practice.
- Gain analytical skills to leverage the data and make sustainable, evidence-based strategic decisions.
- Enhance your organisational leadership, management and governance capabilities to make independent and ethical decisions.



## Graduate Certificate of Conflict Management and Resolution

Fees: \$7,315<sup>1</sup> total, Commonwealth supported  
OR \$14,080<sup>1</sup> total, full-fee tuition

### WHAT TO EXPECT

- Develop expert skills in conflict analysis, management and leadership, to help you manage and resolve conflict.
- Learn how to communicate with and support people in personal, group, and organisational change situations.



## Master of Conflict Management and Resolution

Fees: \$28,160<sup>1</sup> per year full-time, full-fee tuition

### WHAT TO EXPECT

- Apply your theoretical knowledge and engage with real-world conflict scenarios. Learn from leading industry practitioners and gain hands-on experience through JCU's partnership with the Queensland Dispute Resolution Branch (DRB).
- Analyse and evaluate complex conflicts and related theories and standards for professional practice in conflict management and resolution, business and workplace environments, leadership and management positions.
- Research, analyse and interpret data from a range of sources to support ongoing conflict management and when possible, conflict resolution. Exercise independent ethical judgment and initiative in conflict management and resolution practice and research.



## Master of Business Administration - Master of Conflict Management and Resolution

Fees: \$28,160<sup>1</sup> per year full-time, full-fee tuition

### WHAT TO EXPECT

- In your Master of Business Administration, develop advanced management skills and learn how to successfully analyse, plan and implement decisions in the workplace. Be exposed to a broad range of disciplines, learn from leading business experts, and benefit from highly-influential networking.
- In your Master of Conflict Management and Resolution, gain the knowledge and practical skills to analyse, manage and resolve conflicts in a range of individual, workplace, and community settings. Learn from leading industry practitioners and engage with genuine conflict scenarios through JCU's partnership with the Queensland Dispute Resolution Branch (DRB).



## Graduate Certificate of Project Management

Fees: \$7,312<sup>1</sup> total, Commonwealth supported  
OR \$14,080<sup>1</sup> total, full-fee tuition

### WHAT TO EXPECT

- Develop skills in linear project planning and management; strategy and leadership, risk management and applying agile methods to manage projects.
- Engage with real-world problems through complex case studies and project-based assessments.



## Master of Governance and Leadership

Fees: \$28,160<sup>1</sup> per year full-time, full-fee tuition

### WHAT TO EXPECT

- Develop innovative methodologies for the management of complex societal issues. Investigate, analyse and synthesise information, issues and problems with concepts and theories in relation to governance and leadership practices.
- Apply your knowledge, skills and ideas to and advance understandings and ethical practices in governance and leadership.
- Choose a major in one of three subject areas or complete a research-based project on governance and leadership.

### MAJORS

- Economics** - Build your economic analysis toolkit with a focus on environmental and resource economics.
- Leadership** - Grow your knowledge and skills to become a mindful global leader of the future.
- Conflict Management and Resolution** - Develop your expertise to become an effective leader in the face of change, uncertainty and conflict.



<sup>1</sup> Study fees estimated at time of printing. Student services and amenities fees also apply per subject, capped per year.

<sup>2</sup> Part-time study mode only.

<sup>1</sup> Study fees estimated at time of printing. Student services and amenities fees also apply per subject, capped per year.

<sup>2</sup> Part-time study mode only.



# Education

JCU Education is a leader in promoting lifelong learning in young Australians. Gain in-depth knowledge and advanced practical skills to make a difference in regional, rural and remote communities, as well as improving Indigenous education outcomes.

Enhance your expertise

Build the skills to progress your career

#1 in Queensland

for starting salary

Good Universities Guide 2023, PG Outcomes

#1 in Queensland

for full-time employment

Good Universities Guide 2023, PG Education and Training

## Graduate Certificate of Education

Fees: \$10,980<sup>1</sup> total, full-fee tuition

### WHAT TO EXPECT

- Enhance your practical teaching skills and gain specialist knowledge in ethical practices and contemporary theories of effective leadership.
- Gain valuable experience to be an educator that makes a difference at a personal, organisational and policy level.



## Master of Education

Fees: \$21,960<sup>1</sup> per year full-time, full-fee tuition

### WHAT TO EXPECT

- Explore globalisation and leadership across a range of contexts and learning communities. An in-depth understanding of recent developments in education and professional practice will equip you to be a leader in your field.
- Develop your expertise in education policy, curriculum, pedagogy, communication theory and research in education for sustainability.

### MAJORS

- Educational Leadership** - Develop advanced knowledge in ethical practices within educational leadership and the strategies for leading change.
- Educational Research** - Gain the experience and skills to be a researcher in education through a combination of coursework and a small-scale research project.



## Master of Education - Master of Business Administration

Fees: \$25,060<sup>1</sup> per year full-time, full-fee tuition

### WHAT TO EXPECT

- In your Master of Education, develop an advanced body of theoretical and technical knowledge in Education Management. Review complex information, assess education and management problems and reflect on theories at an advanced level.
- In your Master of Business Administration, develop advanced management skills and learn how to successfully analyse, plan and implement decisions in the workplace. Be exposed to a broad range of disciplines, learn from leading business experts, and benefit from highly influential networking.



## Master of Guidance and Counselling

Fees: \$3,985<sup>1</sup> per year full-time, Commonwealth supported  
OR \$21,960<sup>1</sup> per year full-time, full-fee tuition

### WHAT TO EXPECT

- Explore topics including the foundations of counselling theory and practice, advanced counselling techniques, reflective practice, career and leisure guidance, and atypical development.
- Complete a small, individual research project to apply informed, action-oriented leadership approaches to building social and/or ecological capacity in guidance and counselling.
- Graduate ready to work internationally with the only postgraduate counselling degree qualifying you to practice in Australia and Singapore.



## Master of Teaching and Learning (Primary)

Fees: \$3,985<sup>1</sup> per year full-time, Commonwealth supported  
OR \$21,960<sup>1</sup> per year full-time, full-fee tuition

### WHAT TO EXPECT

- Apply teaching strategies in various learning contexts to become an adaptable and responsible teacher, particularly in tropical, rural, remote and Indigenous communities.
- Choose to specialise in teaching English, Mathematics, Science, Technology, Humanities and Social Science or Health and Physical Education.
- Gain valuable practical skills in school settings with 60 days of professional placements, 20 days of integrated coursework and another 20 days leading a participatory action research project to address community needs.



## Master of Teaching and Learning (Secondary)

Fees: \$3,985<sup>1</sup> per year full-time, Commonwealth supported  
OR \$21,960<sup>1</sup> per year full-time, full-fee tuition

### WHAT TO EXPECT

- Be ready to teach students in Years 7-12 in two learning areas, with the ability to direct curriculum, learning and assessment activities for students from diverse backgrounds and with specific learning needs.
- Apply teaching strategies in various learning contexts to become an adaptable and responsible teacher with expert judgement and critical problem-solving skills.
- Gain valuable practical skills in school settings with 60 days of professional placements, 20 days of integrated coursework and another 20 days leading a participatory action research project to address community needs.



*“This course has given me a wealth of teaching experience in many schools, both guided by an experienced educator and as an independent teacher. This has allowed me to develop my own ‘teacher identity’ – an integral aspect of being an educator. I have made some fantastic friendships that I know will last a lifetime.”*

**Madelain Benedetti**  
MASTER OF TEACHING AND LEARNING (SECONDARY) STUDENT

<sup>1</sup> Study fees estimated at time of printing. Student services and amenities fees also apply per subject, capped per year.  
<sup>2</sup> Brisbane students must complete some subjects online.  
<sup>3</sup> Part-time study mode only.

**LEGEND** C JCU Cairns T JCU Townsville M JCU Mackay I JCU Mt Isa S JCU Singapore B JCU Brisbane R Study online S Start Semester 1 R Start Semester 2 T Trimester intake P Carousel format: Subjects completed one at a time, max 6 per year. 1 Course duration in years P Professional placements V Professional accreditation F Field trips

<sup>1</sup> Study fees estimated at time of printing. Student services and amenities fees also apply per subject, capped per year.  
<sup>2</sup> Brisbane students must complete some subjects online.  
<sup>3</sup> Requires some on-campus attendance by online students.



# Engineering and Information Technology

JCU Engineering and Information Technology is a leader in design thinking and in envisioning a sustainable and prosperous future for the Tropics.

**#1 in Australia**  
for student support  
Good Universities Guide 2023,  
PG Engineering and Technology

**#1 in Australia**  
for learner engagement  
Good Universities Guide 2023,  
PG Engineering and Technology

**#1 in Australia**  
for teaching quality  
Good Universities Guide 2023,  
PG Engineering and Technology



*“I had a great experience as a student at JCU. The academic experience covered a wide range of technical and practical insights through assessments, experiments and industrial internship that helped to boost my professional career.”*

**Sunita Dhital**  
MASTER OF ENGINEERING (PROFESSIONAL) ALUMNI,  
MAJORING IN ELECTRICAL AND RENEWABLE ENERGY

## Master of Engineering (Professional)

**Fees:** \$30,160<sup>1</sup> per year full-time, full-fee tuition

### WHAT TO EXPECT

- Develop in-depth knowledge of advanced engineering methods, including design processes, whole system approaches, contemporary project management tools, and decision-making strategies.
- Learn how to apply engineering principles to risk and asset management, safety in design, business leadership and data analytics.
- Gain advanced technical skills and an understanding of recent developments in engineering with real-world industry experience.

### MAJORS

- **Electrical and Renewable Energy** – Explore the concepts behind renewable energy systems and learn how integrate renewable resources into power systems and processes.
- **Internet of Things (IoT) and Data Engineering** – Increase your knowledge of privacy and security in IoT, data mining, machine learning, sensor technologies and digital automation.
- **Technology and Management** – Develop your expertise in engineering technologies and gain essential management skills for business in the field of engineering.
- **Water Resource Management** – Boost your skills in hydrology, ground water management and advanced water engineering to help manage environmental resources.

## Master of Engineering Management

**Fees:** \$29,140<sup>1</sup> per year full-time, full-fee tuition

### WHAT TO EXPECT

- Learn about recent developments in engineering management and build your technical knowledge of project management, industry standards and best practice.
- Plan and conduct experiments using advanced techniques and tools to challenge established theories across engineering management.
- Apply research principles and methods to plan and execute a substantial research-based project.



## Graduate Certificate of Information Technology

**Fees:** \$4,010<sup>1</sup> total, Commonwealth supported  
OR \$14,080<sup>1</sup> total, full-fee tuition

### WHAT TO EXPECT

- Study internet fundamentals, problem solving and programming, plus your choice of specialist subjects to suit your professional needs and interests.
- Take the next step towards a Master of Information Technology at a pace that suits you.



## Master of Information Technology

**Fees:** \$28,160<sup>1</sup> per year full-time, full-fee tuition

### WHAT TO EXPECT

- Gain expert skills in computer programming, data analysis and multimedia. Learn how to identify and diagnose technical issues, create solutions and improve technical systems.
- Develop your problem-solving capability and programming skills, understand the importance of data modelling, design and development.
- Put your knowledge and skills to the test as you work on a collaborative ICT project from industry or the community, applying IT project management principles to achieve the best results.

### MAJORS

- **Business Informatics**<sup>2</sup> – Develop your understanding of data analysis and decision modelling, business intelligence and data mining, enterprise database systems, and advanced databases and applications.
- **Computing** – Learn how to create technology solutions to human problems through human-computer interaction, advanced algorithm analysis and complex data communication principles.
- **Interactive Technologies and Games Design** – Gain specialist skills in human-computer interactions, intelligent agents and simulation, and advanced game design.

## Master of Information Technology - Master of Business Administration

**Fees:** \$28,160<sup>1</sup> per year full-time, full-fee tuition

### WHAT TO EXPECT

- In your Master of Education, gain expert skills in computer programming, data analysis and multimedia. Develop your problem-solving capability and programming skills, understand the importance of data modelling, design and development.
- In your Master of Business Administration, develop advanced management skills and learn how to successfully analyse, plan and implement decisions in the workplace. Be exposed to a broad range of disciplines, learn from leading business experts, and benefit from highly influential networking.



<sup>1</sup> Study fees estimated at time of printing. Student services and amenities fees also apply per subject, capped per year.

**LEGEND** JCU Cairns JCU Townsville JCU Mackay JCU Mt Isa JCU Singapore JCU Brisbane Study online Start Semester 1 Start Semester 2 Trimester intake Carousel format: Subjects completed one at a time, max 6 per year. Course duration in years Professional placements Professional accreditation Field trips

<sup>1</sup> Study fees estimated at time of printing. Student services and amenities fees also apply per subject, capped per year.

<sup>2</sup> Available for international students only.



# Medicine

JCU Medicine is a leader in health equality. Be equipped with the skills to make an impact – improve healthcare in underserved communities or make life-changing discoveries.

#1 in Australia

for learning resources

Good Universities Guide 2023, PG Medicine

#1 in Queensland

for student support

Good Universities Guide 2023, PG Medicine

#1 in Queensland

for teaching quality

Good Universities Guide 2023, PG Medicine



“My practice has been profoundly changed by the learnings of this course. I’ve told any colleague who would stand still long enough that they should check it out. Thank you for the opportunity to learn more about lifestyle medicine.”

Taya Coates  
MASTER OF LIFESTYLE MEDICINE STUDENT

## Graduate Certificate of Health Professional Education

Fees: \$4,011<sup>1</sup> total, Commonwealth supported  
OR \$13,140<sup>1</sup> total, full-fee tuition

- WHAT TO EXPECT
- Develop a conceptual framework for teaching, learning and research in the health context and across multiple health professions.
  - Broaden your current expertise with specialist knowledge and skills in clinical education and technology.



## Graduate Diploma of Health Professional Education

Fees: \$26,280<sup>1</sup> per year full-time, full-fee tuition

- WHAT TO EXPECT
- Become a leader in improving clinical teaching and education research in all health professions including medicine, nursing, dentistry, and allied health.
  - Develop knowledge and skills in teaching and learning in clinical contexts, educational technologies, assessment, curriculum design and research relevant to your career in health.



## Master of Health Professional Education

Fees: \$26,280<sup>1</sup> per year full-time, full-fee tuition

- WHAT TO EXPECT
- Develop knowledge and skills in teaching and learning in clinical contexts, educational technologies, assessment, evaluation, curriculum design, leadership, and evidenced-based leadership.
  - Investigate, analyse, and synthesise the theories and principles of health professional education. Solve complex problems unique to regional, remote and tropical Australia.
  - Design, manage, and conduct a research-based project with careful consideration for ethical principles.



## Graduate Diploma of Surgical Anatomy

Fees: \$30,160<sup>1</sup> per year full-time, full-fee tuition

- WHAT TO EXPECT
- Learn the advanced structure of the human body by regions, through a combination of core anatomy teaching, specialist surgical teaching and a full human body cadaveric dissection.
  - Review your knowledge of anatomical development, tissue structure and functional systematic structure to identify anatomical variants and their medical implications.



## Graduate Certificate of Lifestyle Medicine

Fees: \$4,010<sup>1</sup> total, Commonwealth supported  
OR \$13,140<sup>1</sup> total, full-fee tuition

- WHAT TO EXPECT
- Investigate and assess lifestyle-related disease. Engage with innovation and entrepreneurship in the health, community and industry spaces.
  - Take the next step towards a Master of Lifestyle Medicine at a pace that suits you.



## Graduate Diploma of Lifestyle Medicine

Fees: \$8,021<sup>1</sup> per year full-time, Commonwealth supported  
OR \$26,805<sup>1</sup> per year full-time, full-fee tuition

- WHAT TO EXPECT
- Gain the skills to manage lifestyle-related health problems and prevent or reverse common chronic illnesses.
  - Critically investigate and assess lifestyle-related disease. Choose from electives in research, public health, business and health professional education to align with your career goals.



## Master of Lifestyle Medicine

Fees: \$8,021<sup>1</sup> per year full-time, Commonwealth supported  
OR \$27,195<sup>1</sup> per year full-time, full-fee tuition

- WHAT TO EXPECT
- Critically investigate and assess lifestyle-related disease, including diverse models of care. Learn to apply theories in psychological, medical, nutritional and addiction science in a variety of health contexts.
  - Choose from electives in research, public health, business and health professional education to align with your career goals.
  - Apply your skills and knowledge in a substantial lifestyle and social medicine project in your setting of choice, including a health service, community, workplace, education or online setting.



<sup>1</sup> Study fees estimated at time of printing. Student services and amenities fees also apply per subject, capped per year.  
<sup>2</sup> Part-time study mode only  
<sup>3</sup> Requires some on-campus attendance.

LEGEND JCU Cairns JCU Townsville JCU Mackay JCU Mt Isa JCU Singapore JCU Brisbane Study online Start Semester 1 Start Semester 2 Trimester intake Carousel format: Subjects completed one at a time, max 6 per year. Course duration in years Professional placements Professional accreditation Field trips

<sup>1</sup> Study fees estimated at time of printing. Student services and amenities fees also apply per subject, capped per year.  
<sup>2</sup> Part-time study mode only  
<sup>3</sup> Requires some on-campus attendance.



# Nursing and Midwifery

JCU Nursing and Midwifery is a leader in regional, rural and tropical healthcare sciences. A vibrant learning culture fosters highly skilled and knowledgeable graduates.

**#1 in Australia**  
for median salary  
Good Universities Guide 2023, PG Nursing

**#1 in Queensland**  
for learning resources  
Good Universities Guide 2023, PG Nursing

**#1 in Queensland**  
for skills development  
Good Universities Guide 2023, PG Nursing

## Graduate Certificate of Nursing

**Fees:** \$11,400<sup>1</sup> total, full-fee tuition

### WHAT TO EXPECT

- Gain advanced knowledge and specialist skills in your chosen nursing field.
- Be ready to take on nursing leadership roles in your area of practice, receive increased professional recognition and boost your career potential.



## Graduate Diploma of Nursing

**Fees:** \$22,800<sup>1</sup> total, full-fee tuition

### WHAT TO EXPECT

- Learn to manage teams, develop your business skills and be ready to lead nursing practice in a hospital setting.
- Develop your critical thinking skills and theoretical knowledge to apply advanced nursing concepts in the clinical setting.



## Master of Nursing

**Fees:** \$34,200<sup>1</sup> total, full-fee tuition

### WHAT TO EXPECT

- Increase your skills to take on more complex roles and be ready to take on the challenges presented by a changing healthcare landscape.

- Progress to the next phase of your career with skills in advanced communication, data management, governance, informatics, ethical leadership, clinical education and advanced patient care.
- Adapt to the challenges of changing healthcare environments in rural, remote and urban healthcare settings.

### MAJORS

- **Advanced Practice** – Develop the skills you need to deliver advanced patient care.
- **Education** – Gain the ability to take on educational practice roles in clinical or non-clinical environments.
- **Leadership and Management** – Build the confidence and knowledge to embrace leadership or management positions in healthcare.



## Graduate Diploma of Midwifery

**Fees:** \$3,985<sup>1</sup> per year full-time, Commonwealth supported  
OR \$22,800<sup>1</sup> per year full-time, full-fee tuition

### WHAT TO EXPECT

- Benefit from first-hand experience working with midwives during a continuous placement in a facility of your choice in Australia.
- Develop culturally safe strategies to promote and optimise health, welfare and autonomy of childbearing women in Australia, with specific reference to Aboriginal and Torres Strait Islander families.



*“Education has always been an interest of mine and I wanted to do a degree that would help me pursue a nursing education role either in a hospital or tertiary setting. It was very student focused and highly relevant to my learning needs, challenging me personally and professionally.”*

**Amy McCrystal**

MASTER OF NURSING ALUMNI, MAJORING IN EDUCATION

<sup>1</sup> Study fees estimated at time of printing. Student services and amenities fees also apply per subject, capped per year.



# Psychology

JCU Psychology specialises in accredited training with special reference to rural, remote, and Indigenous communities. Graduates gain advanced academic knowledge, enabling them to facilitate high-quality mental health care.

## #1 in Australia

for median salary

Good Universities Guide 2023, PG Psychology

## Five stars

for full-time employment

Good Universities Guide 2023, PG Psychology

## Five stars

for student teacher ratio

Good Universities Guide 2023, PG studies

## Graduate Certificate of Psychology

**Fees:** \$12,720<sup>1</sup> total, full-fee tuition

### WHAT TO EXPECT

- Develop your knowledge and skills in major theoretical perspectives, philosophical and historical developments in core areas of psychology.
- Apply psychological concepts in culturally diverse and geographically dispersed contexts.



## Graduate Diploma of Psychology

**Fees:** \$14,630<sup>1</sup> per year full-time, Commonwealth supported  
OR \$28,600<sup>1</sup> per year full-time, full-fee tuition

### WHAT TO EXPECT

- Study the methods and ethics of scientific investigations and evidence-based practice. Use your skills to devise and implement a research project in a small group.
- Increase your knowledge of major theoretical perspectives and concepts, interventions and interactions, plus philosophical and historical developments in psychology.



## Graduate Diploma of Psychology (Bridging)

**Fees:** \$31,800<sup>1</sup> total, full-fee tuition

### WHAT TO EXPECT

- Develop a comprehensive understanding of contemporary theoretical perspectives of psychology, their philosophical developments and connections.
- Gain essential skills using technology and statistical methods to facilitate research, client care and community outcomes.



## Master of Psychology (Clinical)

**Fees:** \$3,985<sup>1</sup> per year full-time, Commonwealth supported  
OR \$28,600<sup>1</sup> per year full-time, full-fee tuition

### WHAT TO EXPECT

- Gain the advanced academic and practical experience for professional practice that is required for registration as a practising psychologist.
- Increase your knowledge, skills, and technical competencies in clinical psychology to facilitate quality client outcomes in tropical, Indigenous, and rural and remote communities.
- Demonstrate your understanding of research principles, methods, and ethics in a research project addressing a complex issue in clinical psychology.



<sup>1</sup> Study fees estimated at time of printing. Student services and amenities fees also apply per subject, capped per year.

<sup>2</sup> Professional accreditation for Townsville only.

*“The course highlight has been working in collaboration with talented and kind-hearted students passionate about helping people. The educators have established a supportive environment where sharing real-life experiences, challenges, and rewarding moments enhance the learning process.”*

**Shaun McManus**

STUDYING A MASTER OF PSYCHOLOGY (CLINICAL)



# Public Health and Tropical Medicine

JCU Public Health and Tropical Medicine is a world leader in improving the health and wellbeing of communities within the global Tropics. JCU graduates have highly specialised skills and expertise, enabling them to be effective leaders for positive change in the communities they live and work in.

#1 in Queensland

for median salary

Good Universities Guide 2023, PG Health Services & Support

Exclusive course offering

The Master of Public Health and Tropical Medicine is the only course of its kind in Australia

Five stars

for learning resources and full-time employment

Good Universities Guide 2023, PG Health Services & Support



“This course is the only one of its kind in Australia and it is giving me the foundation and knowledge I need to expand my career. I absolutely love it. The staff are great and so are the facilities.”

**Ben Turner**  
GRADUATE CERTIFICATE OF AEROMEDICAL RETRIEVAL

## Graduate Certificate of Aeromedical Retrieval

Fees: \$16,800<sup>1</sup> total, full-fee tuition

### WHAT TO EXPECT

- Gain a broad understanding of the foundations of aeromedical retrieval and the expertise to manage patient transportation in fixed-wing aircraft and helicopters.
- Build on your qualification as a doctor, nurse, or paramedic to work with aeromedical evacuation systems and gain specialist skills in pre-hospital and secondary retrieval situations.



## Graduate Certificate of Communicable Disease Control

Fees: \$4,550<sup>1</sup> total, Commonwealth supported  
OR \$14,055<sup>1</sup> total, full-fee tuition

### WHAT TO EXPECT

- Gain advanced knowledge in infectious disease epidemiology, infection control, the interaction of environmental factors and human and animal health.
- Develop a communicable disease control response strategy to identify, analyse and contain a communicable disease outbreak.



## Graduate Certificate of Disaster Health and Humanitarian Assistance

Fees: \$4,565<sup>1</sup> total, Commonwealth supported  
OR \$13,100<sup>1</sup> total, full-fee tuition

### WHAT TO EXPECT

- Be equipped to provide a coordinated and informed public health response in humanitarian emergencies and disaster settings both nationally and internationally.
- Learn and apply specialist theoretical and technical knowledge across a range of real-world disaster and displacement scenarios.



## Graduate Certificate of Public Health

Fees: \$4,570<sup>1</sup> total, Commonwealth supported  
OR \$14,700<sup>1</sup> total, full-fee tuition

### WHAT TO EXPECT

- Explore methods to identify public health issues, assess their contributing factors and apply your knowledge and skills to help address these issues.
- Learn to develop strategies for detecting, preventing and controlling diseases in vulnerable tropical, rural, remote and Indigenous communities.



## Master of Public Health

Fees: \$8,610<sup>1</sup> per year full-time, Commonwealth supported  
OR \$28,500<sup>1</sup> per year full-time, full-fee tuition

### WHAT TO EXPECT

- Understand the urgent problems facing vulnerable communities and learn how to develop strategies to detect, prevent and control communicable and non-communicable diseases.
- Learn about infection prevention and control, human parasitology and medical entomology, social science in public health, health promotion, Aboriginal and Torres Strait Islander Health, travel medicine, environmental health, and health economics.
- Apply an evidence-based approach relevant to contemporary priorities, biostatistics, communicable disease control and public health management.

### MAJORS

- Aeromedical Retrieval<sup>4</sup>** – Gain a broad understanding of the foundations of aeromedical retrieval and the expertise to manage patient transportation in fixed-wing aircraft and helicopters.



## Master of Public Health - Master of Business Administration

Fees: \$27,900<sup>1</sup> per year full-time, full-fee tuition

### WHAT TO EXPECT

- In your Master of Public Health, gain the strategic expertise to detect, prevent and control communicable and non-communicable diseases. Build your knowledge of infection prevention and control, health promotion and global health, applying an evidence-based approach to public health management.
- In your Master of Business Administration, develop advanced management skills and learn how to successfully analyse, plan and implement decisions in the workplace. Be exposed to a broad range of disciplines, learn from leading business experts, and benefit from highly influential networking.



## Master of Public Health - Master of Global Development

Fees: \$9,825<sup>1</sup> per year full-time, Commonwealth supported  
OR \$28,280<sup>1</sup> per year full-time, full-fee tuition

### WHAT TO EXPECT

- In your Master of Public Health, gain the strategic expertise to detect, prevent and control communicable and non-communicable diseases. Build your knowledge of infection prevention and control, health promotion and global health, applying an evidence-based approach to public health management.
- In your Master of Global Development, explore ways to address global poverty, inequality, climate change and other development issues. Learn to design, implement and evaluate development projects and policy-related initiatives.



## Graduate Diploma of Public Health and Tropical Medicine

Fees: \$29,940<sup>1</sup> per year full-time, full-fee tuition

### WHAT TO EXPECT

- Focus on the prevention and control of communicable diseases in tropical contexts. Build your knowledge of epidemiology, pathogenesis, clinical presentation, differential diagnosis and management of tropical diseases.
- Understand the importance of reconciliation, diversity and sustainability in relation to the socio-ecological nature of public health in Indigenous, tropical, rural and remote contexts.



<sup>1</sup> Study fees estimated at time of printing. Student services and amenities fees also apply per subject, capped per year.

<sup>2</sup> Part-time study mode only.

<sup>3</sup> Requires some on-campus attendance.

<sup>4</sup> Available in Townsville only.

**LEGEND** JCU Cairns JCU Townsville JCU Mackay JCU Mt Isa JCU Singapore JCU Brisbane Study online Start Semester 1 Start Semester 2 Trimester intake Carousel format: Subjects completed one at a time, max 6 per year. Course duration in years Professional placements Professional accreditation Field trips

<sup>1</sup> Study fees estimated at time of printing. Student services and amenities fees also apply per subject, capped per year.

<sup>2</sup> Part-time study mode only.

<sup>3</sup> Requires some on-campus attendance.

<sup>4</sup> Available in Townsville only.



# Public Health and Tropical Medicine

JCU Public Health and Tropical Medicine is a world leader in improving the health and wellbeing of communities within the global Tropics. JCU graduates have highly specialised skills and expertise, enabling them to be effective leaders for positive change in the communities they live and work in.

#1 in Queensland

for median salary

Good Universities Guide 2023, PG Health Services & Support

Exclusive course offering

The Master of Public Health and Tropical Medicine is the only course of its kind in Australia

Five stars

for learning resources and full-time employment

Good Universities Guide 2023, PG Health Services & Support

## Master of Public Health and Tropical Medicine

Fees: \$9,125<sup>1</sup> per year full-time, Commonwealth supported  
OR \$29,940<sup>1</sup> per year full-time, full-fee tuition

### WHAT TO EXPECT

- Gain advanced knowledge in the disciplines of public health and tropical medicine, with depth in epidemiology, pathogenesis, clinical presentation, complications, differential diagnosis, investigation and management of tropical diseases.
- Develop strategies to detect, prevent and control communicable and non-communicable diseases ensuring safe and healthy environments for tropical, rural, remote and Indigenous communities.
- Explore ways to assess, analyse and communicate public health information to relevant specialist and non-specialist audiences.



## Graduate Certificate of Travel Medicine

Fees: \$16,800<sup>1</sup> per year full-time, full-fee tuition

### WHAT TO EXPECT

- Learn to investigate and manage travel-related diseases, perform risk-assessments, and promote the health of travellers.
- Develop your knowledge of current national and international practices and guidelines.



## Graduate Diploma of Tropical Medicine and Hygiene

Fees: \$33,600<sup>1</sup> per year full-time, full-fee tuition

### WHAT TO EXPECT

- Build your skills and knowledge in detecting, preventing, and controlling diseases in tropical, rural, remote, and Indigenous communities.
- Study epidemiology, pathogenesis, diagnosis, and management of tropical diseases in depth. Develop your evidence-based approach with recent advancements in the field.



# Science

JCU Science is a leader in envisioning a sustainable and prosperous future for the Tropics. JCU Graduates have highly developed practical skills and expertise that they use to make a difference.

#1 in Queensland

for learner engagement

Good Universities Guide 2023, PG Computing and Information Systems

#1 in Queensland

for full-time employment

Good Universities Guide 2023, PG Outcomes

#1 in Queensland

for starting salary

Good Universities Guide 2023, PG Outcomes

## Graduate Certificate of Data Science

Fees: \$14,080<sup>1</sup> total, full-fee tuition

### WHAT TO EXPECT

- Build the foundation of skills and knowledge you need to progress through to the Master of Data Science and pursue a data science career.
- Learn from industry experts in mathematics, IT, business and data science across research and academic fields.



## Graduate Diploma of Data Science

Fees: \$28,160<sup>1</sup> total, full-fee tuition

### WHAT TO EXPECT

- Sharpen your data science skills with a clear understanding of the tools and frameworks use in database systems, data visualisation and statistical methods for data science.
- Learn from industry experts in mathematics, IT, business and data science across research and academic fields.



## Graduate Diploma of Data Science (Internet of Things)

Fees: \$28,160<sup>1</sup> total, full-fee tuition

### WHAT TO EXPECT

- Gain specialist knowledge of complex data ecosystems including smart devices, connected networks, sensors, programming languages, tools and platforms.
- Learn to design and implement end-to-end smart systems and analyse data to drive more insightful business strategies.



## Master of Data Science

Fees: \$42,240<sup>1</sup> total, full-fee tuition

### WHAT TO EXPECT

- Explore recent developments and modern challenges in data science, in areas including machine learning, data mining, algorithm development and advanced modelling.
- Boost your skills in programming languages and software including Python, R, Tableau and AWS.
- Learn from industry experts in mathematics, IT, business and data science across research and academic fields.



<sup>1</sup> Study fees estimated at time of printing. Student services and amenities fees also apply per subject, capped per year.  
<sup>2</sup> Part-time study mode only.  
<sup>3</sup> Requires some on-campus attendance.  
<sup>4</sup> Available in Townsville only.

**LEGEND** JCU Cairns JCU Townsville JCU Mackay JCU Mt Isa JCU Singapore JCU Brisbane Study online Start Semester 1 Start Semester 2 Trimester intake Carousel format: Subjects completed one at a time, max 6 per year. Course duration in years Professional placements Professional accreditation Field trips

<sup>1</sup> Study fees estimated at time of printing. Student services and amenities fees also apply per subject, capped per year.  
<sup>2</sup> Some subjects must be completed online.  
<sup>3</sup> Can be completed in 6 months full-time in Cairns.  
<sup>4</sup> Can be completed in 2 years full-time in Cairns.  
<sup>5</sup> Available in Townsville only.  
<sup>6</sup> Professional placements available in Cairns only.



# Science

JCU Science is a leader in envisioning a sustainable and prosperous future for the Tropics. JCU Graduates have highly developed practical skills and expertise that they use to make a difference.

#1 in Queensland  
for learner engagement

Good Universities Guide 2023, PG Computing  
and Information Systems

#1 in Queensland  
for full-time employment

Good Universities Guide 2023, PG Outcomes

#1 in Queensland  
for starting salary

Good Universities Guide 2023, PG Outcomes

## Master of Data Science (Professional)

**Fees:** \$56,320<sup>1</sup> total, full-fee tuition online  
OR \$28,160<sup>1</sup> per year full-time, full-fee tuition on campus

### WHAT TO EXPECT

- Explore recent developments and modern challenges in data science, in areas including machine learning, data mining, algorithm development and advanced modelling.
- Boost your skills in programming languages and software including Python, R, Tableau and AWS.
- Develop a professional portfolio of experience on real-world industry projects to help fast-track your career progress.

 2 3 4 5 6

## Master of Marine Biology

**Fees:** \$8,020<sup>1</sup> per year full-time, Commonwealth supported  
OR \$30,160<sup>1</sup> per year full-time, full-fee tuition

### WHAT TO EXPECT

- Develop specialist skills and knowledge in marine biology, statistics and modelling, environmental science and management, plus marine and microbial ecology.
- Gain extensive experience in research methods and analysis, taking your data science and communication skills to the next level.
- Go deeper into areas of marine biology including quantitative marine ecology, conservation biology, fisheries, and the biology, life history and taxonomy of tropical marine organisms.

<sup>1</sup> Study fees estimated at time of printing. Student services and amenities fees also apply per subject, capped per year.

<sup>2</sup> Some subjects must be completed online.

<sup>3</sup> Can be completed in 6 months full-time in Cairns.

<sup>4</sup> Can be completed in 2 years full-time in Cairns.

<sup>5</sup> Available in Townsville only.

<sup>6</sup> Professional placements available in Cairns only.

**LEGEND**  JCU Cairns  JCU Townsville  JCU Mackay  JCU Mt Isa  JCU Singapore  JCU Brisbane  Study online  Start Semester 1  Start Semester 2  Trimester intake  Carousel format: Subjects completed one at a time, max 6 per year.  Course duration in years  Professional placements  Professional accreditation  Field trips

### MAJORS

- **Professional** – Complete an internship and gain professional experience in conservation science, environmental management, fisheries, eco-tourism, science communication, big data, or policy development.
- **Research** – Take on a year-long research project on a topic of your choice, potentially focusing on the biology and ecology of marine organisms and the factors influencing their habitat.

## Graduate Certificate of Science

**Fees:** \$4,010<sup>1</sup> total, Commonwealth supported  
OR \$15,080<sup>1</sup> total, full-fee tuition

### WHAT TO EXPECT

- Build your knowledge and skills in a specific scientific area and take the next steps towards further study options including the Master of Science.
- Choose from Aquaculture Science and Technology<sup>5</sup>, Environmental Earth Science, Environmental Management<sup>5</sup>, Fisheries Science and Management<sup>5</sup>, Geology<sup>5</sup>, Planning and Design and Tropical Biology and Conservation.

## Graduate Diploma of Science

**Fees:** \$8,842<sup>1</sup> per year full-time, Commonwealth supported  
OR \$30,160<sup>1</sup> per year full-time, full-fee tuition

### WHAT TO EXPECT

- Gain advanced theoretical and practical knowledge in a range of specialised scientific fields, through practical workshops, projects and directed study.
- Choose from Aquaculture Science and Technology<sup>5</sup>, Environmental Earth Science, Environmental Management<sup>5</sup>, Fisheries Science and Management<sup>5</sup>, Geology<sup>5</sup>, Global Change Biology and Tropical Biology and Conservation.

## Master of Science

**Fees:** \$8,021<sup>1</sup> per year full-time, Commonwealth supported  
OR \$30,160<sup>1</sup> per year full-time, full-fee tuition

### WHAT TO EXPECT

- Learn from research and industry experts and diversify your knowledge of unique environments including coral reefs, seagrass beds, mangroves, dry savannahs and tropical rainforests.
- Gain hands-on experience with access to research facilities including the Orpheus Island Research Station and the Daintree Rainforest Observatory.
- Consider the challenges posed to natural environments and analyse the potential for viable solutions.

Refer to Shared Majors for further details.

<sup>1</sup> Study fees estimated at time of printing. Student services and amenities fees also apply per subject, capped per year.

<sup>2</sup> Some subjects must be completed online.

<sup>3</sup> Can be completed in 6 months full-time in Cairns.

<sup>4</sup> Can be completed in 2 years full-time in Cairns.

<sup>5</sup> Available in Townsville only.

<sup>6</sup> Professional placements available in Cairns only.

## Master of Science (Professional)

**Fees:** \$8,016<sup>1</sup> per year full-time, Commonwealth supported  
OR \$30,160<sup>1</sup> per year full-time, full-fee tuition

### WHAT TO EXPECT

- Learn from research and industry experts and diversify your knowledge of unique environments including coral reefs, seagrass beds, mangroves, dry savannahs and tropical rainforests.
- Advance your professional career in science with an independent research project or an internship with JCU Science industry partners.
- Consider the challenges posed to natural environments and analyse the potential for viable solutions.

Refer to Shared Majors for further details.

### SHARED MAJORS

- **Aquaculture Science and Technology<sup>5</sup>** – Explore the scientific, technological and practical applications of breeding aquatic organisms for food, aquarium, pearl and pharmaceutical applications.
- **Environmental Earth Science** – Learn about the impacts of land use, land management, and climate change and how applied science is helping to solve these environmental problems.
- **Environmental Management<sup>5</sup>** – Develop skills in remote sensing, geographic information systems, and environmental and social impact assessments.
- **Fisheries Science and Management<sup>5</sup>** – Learn the fundamentals of fisheries science, sustainable development and management approaches in tropical environments.
- **Geology<sup>5</sup>** – Study geological structures, mineralogy, plate tectonics and geochemistry, along with the field, instrumental and analytical techniques used to conduct research.
- **Global Change Biology** – Identify major issues impacting species and ecosystems, analyse the contributing factors and formulate methods of solving some of our world's biggest problems.
- **Tropical Biology and Conservation** – Investigate the diversity of the biological world and build your knowledge across zoology, ecology, botany and evolutionary biology.



# Society and Culture

JCU Society and Culture empowers critical thinking. Be equipped to find solutions to social, cultural, and economic issues with a deep understanding of social justice and sustainable societies.

Five stars

for student teacher ratio

Good Universities Guide 2023

Access expertise

World-class research in Human Society

Excellence in Research Australia 2018

#1 in Queensland

for full-time employment

Good Universities Guide 2023



“I loved the opportunity to work closely with fellow students and staff and discuss the current issues in the sector. I would recommend this degree to anyone interested in development and even those already working in the field.”

Francesca Earp  
MASTER OF GLOBAL DEVELOPMENT ALUMNI

SOCIAL SCIENCES

## Graduate Certificate of Global Development

Fees: \$5,520<sup>1</sup> total, Commonwealth supported  
OR \$15,080<sup>1</sup> total, full-fee tuition

- WHAT TO EXPECT
- Develop your experience in analysing, evaluating and generating solutions to complex social and environmental problems.
  - Integrate and apply advanced theoretical and technical knowledge in global development policy and practice.



## Graduate Diploma of Global Development

Fees: \$30,150<sup>1</sup> per year full-time, full-fee tuition

- WHAT TO EXPECT
- Build your specialist skills and experience to support sustainable local and global development.
  - Analyse, evaluate and generate solutions to development problems in tropical, remote and inter-cultural settings.



## Master of Global Development

Fees: \$11,040<sup>1</sup> per year full-time, Commonwealth supported  
OR \$30,150<sup>1</sup> per year full-time, full-fee tuition

- WHAT TO EXPECT
- Gain the expertise and specialist skills to address global poverty, inequality, climate change and other development issues.
  - Develop professional leadership skills and culturally sensitive practices. Learn to design, implement and evaluate development projects and policy-related initiatives.
  - Learn from industry leaders through an internship or complete an individual research project.



## Graduate Certificate of Indigenous Studies

Fees: \$7,312<sup>1</sup> total, Commonwealth supported  
OR \$10,980<sup>1</sup> total, full-fee tuition

- WHAT TO EXPECT
- Develop insight into the contemporary position of Indigenous people and build your capacity to engage effectively with Indigenous communities.
  - Explore the continuities of Indigenous knowledges and traditions and the impacts of colonisation.



## Graduate Certificate of Human Services

Fees: \$11,620<sup>1</sup> total, full-fee tuition

- WHAT TO EXPECT
- Gain in-depth knowledge of the key areas of social work practice in Australia, including ethics, methods and professional standards.
  - Graduate ready to pursue the Master of Social Work (Professional Qualifying) and progress towards becoming a professional social worker.



## Master of Social Work (Professional Qualifying)

Fees: \$8,021<sup>1</sup> per year full-time, Commonwealth supported  
OR \$23,240<sup>1</sup> per year full-time, full-fee tuition

- WHAT TO EXPECT
- Understand the underlying values, ethics, theories, principles, professional practice and workplace contexts in the social work discipline.
  - Gain the critical skills to improve the lives of individuals, families, groups and communities, working towards creating a just and equitable society.
  - Consider contemporary Australian issues, international perspectives and those of Aboriginal and Torres Strait Islander peoples.



<sup>1</sup> Study fees estimated at time of printing. Student services and amenities fees also apply per subject, capped per year.  
<sup>2</sup> Part-time study mode only.

<sup>1</sup> Study fees estimated at time of printing. Student services and amenities fees also apply per subject, capped per year.  
<sup>2</sup> Part-time study mode only.  
<sup>3</sup> Some subjects must be completed online.



# Tourism

JCU Tourism, Hospitality and Events is a leader in hospitality, tourism and event management. Small classes allow students to access world-class lecturers who are experts in their field.

#1 in Queensland

for median salary

Good Universities Guide 2023,  
PG Business and Management

#1 in Queensland

for full-time employment

Good Universities Guide 2023,  
PG Business and Management

Five stars

for student teacher ratio

Good Universities Guide 2023

## Master of International Tourism and Hospitality Management

Fees: \$28,160<sup>1</sup> per year full-time, full-fee tuition

### WHAT TO EXPECT

- Build your decision-making skills through critical analysis of analyse high-level issues, with a focus on sustainability, innovation and effective leadership.
- Advance your career and become a management-level professional with expert knowledge of business operations and administration in tourism and hospitality.
- Explore topics including global destinations and competitiveness, tourism and the environment, customer service, management strategies, accounting and finance.



## Master of International Tourism and Hospitality Management - Master of Business Administration

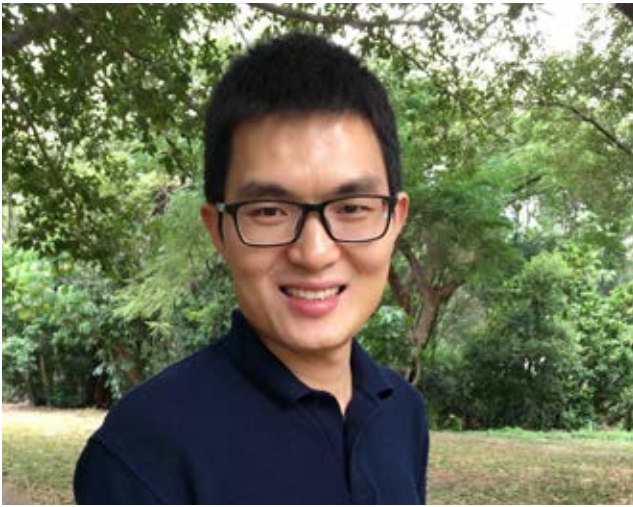
Fees: \$28,160<sup>1</sup> per year full-time, full-fee tuition

### WHAT TO EXPECT

- In your Master of International Tourism and Hospitality Management, gain expert knowledge of business operations and administration and develop the decision-making skills to critically analyse high-level issues. Explore topics including global competitiveness, management strategies and customer service.
- In your Master of Business Administration, develop advanced management skills and learn how to successfully analyse, plan and implement decisions in the workplace. Be exposed to a broad range of disciplines, learn from leading business experts, and benefit from highly influential networking.



**LEGEND** C JCU Cairns T JCU Townsville M JCU Mackay I JCU Mt Isa S JCU Singapore B JCU Brisbane Study online Start Semester 1 Start Semester 2 Trimester intake  
Carousel format: Subjects completed one at a time, max 6 per year. Course duration in years Professional placements Professional accreditation Field trips



*“I wanted to do research that could help the tourism industry provide improved services and target valuable markets. At JCU, I worked with an expert supervisor, did the research I dreamed of, made many friends, and learned so much. All of my supervisors took a lot of time to work with me, review my drafts and provide so much feedback — it encouraged me to work better.”*

**Dr Haipeng Jin**

ALUMNI - PHD FOCUSING ON TOURISM RESEARCH

<sup>1</sup> Study fees estimated at time of printing. Student services and amenities fees also apply per subject, capped per year.  
<sup>2</sup> Can be completed in 16 months full-time in Singapore.  
<sup>3</sup> Professional placements available in Cairns only.

# Coursework degrees

Course	Duration (years)	Campus/ Mode	Intake	Prerequisites	Course Code	Page no.
MASTERS BY COURSEWORK						
Master of Business Administration	Up to 2	T, B, S, O	T1, T2, T3	AQF level 7 bachelor degree in a cognate discipline; or AQF level 8 degree; or 4 year managerial experience that satisfies the course co-ordinator's requirements.	116204	21
Master of Business Administration Global	2	O	Carousel	AQF level 7 bachelor degree in a cognate discipline plus two years business experience; or four years experience in a managerial role; or equivalent qualifications or practical experience.	300204	24
Master of Business Administration– Master of Conflict Management and Resolution	2	T, O	T1, T2, T3	AQF level 7 bachelor degree in a business or human services discipline; or equivalent qualifications or practical experience.	112004	25
Master of Clinical Exercise Physiology	1.5	T	S1	ESSA-accredited AQF level 7 bachelor of sport and exercise science program or equivalent qualification from an overseas institution; or current ESSA accreditation as an exercise scientist.	118804	18
Master of Conflict Management and Resolution	1.5	T, O	T1, T3	AQF level 7 bachelor degree; or equivalent qualifications with relevant professional experience.	117304	24
Master of Data Science	2	O	Carousel	AQF level 7 bachelor degree or five years or more relevant industry experience in IT or data science; or other qualifications with relevant practical experience.	300504	39
Master of Data Science (Professional)	2.7	C	S1, S3	AQF level 7 bachelor degree; or a minimum of five years relevant industry experience in IT or data science or other qualifications with relevant practical experience	300604	40
		O	Carousel			
Master of Education	1.5	O	S1, S2	AQF level 7 bachelor education degree; or bachelor degree in another discipline plus two years professional experience in education; or equivalent qualifications.	113804	26
		B	T1, T2, T3			
Master of Education-Master of Business Administration	2	B	T1, T2, T3	AQF level 7 bachelor degree.	117404	26
Master of Engineering Management	2	B	T1, T2, T3	Four-year AQF level 7 bachelor engineering degree; or three-year bachelor engineering degree plus two years professional experience; or equivalent qualifications or experience.	44404	28
Master of Engineering (Professional)	2	T, C	S1, S2	Four-year AQF level 7 bachelor engineering degree in a discipline cognate to the major; or equivalent.	118304	28
Master of Global Development	2	C, O	S1, S2	AQF level 7 bachelor degree; or equivalent qualifications or practical experience.	118204	42
Master of Governance and Leadership	1.5	T, O	T1, T2, T3	AQF level 7 bachelor degree with four years relevant employment/work experience in management, governance or leadership roles; or equivalent qualifications or practical experience.	117704	25
Master of Guidance and Counselling	1.5	T, O	S1, S2	AQF level 7 bachelor degree in education, psychology, social work, law, health or career development disciplines.	34704	27
		S	T1, T2, T3			
Master of Health Professional Education	3*	O	S1, S2	Registration as a nurse, doctor or other health professional in Australia; AQF level 7 bachelor degree in a relevant discipline with two years practical experience; or equivalent.	107004	30
Master of Information Technology	2	C, B, S	T1, T2, T3	AQF level 7 bachelor degree; or equivalent qualifications or practical experience.	113504	29
Master of Information Technology– Master of Business Administration	2	C, B, S	T1, T2, T3	AQF level 7 bachelor degree in information technology.	112404	29
Master of International Tourism and Hospitality Management	2	C, B, S	T1, T2, T3	AQF level 7 bachelor degree; or equivalent qualifications or relevant professional experience.	109104	44
Master of International Tourism and Hospitality Management– Master of Business Administration	2	C, B, S	T1, T2, T3	AQF level 7 bachelor degree in a business or tourism-related discipline; or equivalent qualifications or relevant professional experience.	112304	44
Master of Lifestyle Medicine	1.5	O	S1, S2	AQF level 7 bachelor degree in a health discipline.	122104	31
Master of Marine Biology	2	T	S1, S2	AQF level 7 bachelor degree in science with a minimum GPA of 5.0 (65%); or equivalent.	119504	40

Campus/Mode: T = Townsville; C = Cairns, B = Brisbane, S = Singapore, O = Online.  
Intake: T = Trimester, S = Semester, Carousel = Subjects completed one at a time, maximum 6 per year.

\* Available as part-time study only.  
^ Not all majors available at all campuses/modes.  
# Semester 2 entry for part-time study only.  
## Trimester 2 and 3 entry available in Brisbane only.



Coursework degrees (continued)

Course	Duration (years)	Campus/ Mode	Intake	Prerequisites	Course Code	Page no.
Master of Medical Science	2	T	S1, S2	AQF level 7 biomedical science degree or medical laboratory science degree; or AQF level 8 Graduate Diploma of Medical Science; or equivalent.	117204	20
Master of Nursing	2	O	Carousel	AQF level 7 bachelor degree in nursing, or equivalent, and Registered Nurse (Division 1) registration with the Australian Health Practitioner Regulation Agency (AHPRA).	300004	32
Master of Professional Accounting	2	B	T1, T2, T3	AQF level 7 bachelor degree in a non-accounting discipline; or equivalent.	109504	21
Master of Professional Accounting- Master of Business Administration	2	B	T1, T2, T3	AQF level 7 bachelor degree in a non-accounting discipline; or equivalent.	112104	21
Master of Psychology (Clinical)	2	T, S	S1	AQF level 8 bachelor with Class 1 or 2A honours degree, accredited by the Australian Psychology Accreditation Council and current provisional registration as a psychologist in Australia.	102304	34
Master of Public Health	1.5	T, O	S1, S2	AQF level 7 bachelor degree in a health discipline; or equivalent qualifications or practical experience.	72504	37
Master of Public Health – Master of Business Administration	2	T, O	S1, S2	AQF level 7 bachelor degree in a health discipline; or equivalent qualifications or practical experience.	109804	37
Master of Public Health – Master of Global Development	2	T, C, O	S1, S2	AQF level 7 bachelor degree in a health discipline; or equivalent qualifications or practical experience.	122204	37
Master of Public Health and Tropical Medicine	1.5	T, O	S1, S2	AQF level 7 bachelor degree in a related discipline; or equivalent qualifications with relevant professional experience.	74204	38
Master of Rehabilitation	1.5	O	S1, S2	AQF level 7 bachelor degree in physiotherapy, occupational therapy or speech pathology; or equivalent.	114804	19
Master of Science	1.5	T, C	S1, S2	AQF level 7 bachelor degree in science with a minimum GPA of 5.0 (65%); or equivalent.	106904	41
Master of Science (Professional)	2	T, C	S1, S2	AQF level 7 bachelor degree in science with a minimum GPA of 5.0 (65%); or equivalent.	115804	41
Master of Social Work (Professional Qualifying)	2	T, C	S1, S2	AQF level 7 bachelor degree in a relevant discipline other than an Australian Association of Social Workers (AASW) recognised social work degree; or equivalent qualifications.	103804	43
Master of Teaching and Learning (Primary)	2	T, C, O	S1	AQF level 7 bachelor degree with a full year of study in English, technologies, mathematics, science, humanities and social sciences, the arts, health and physical education.	114004	27
Master of Teaching and Learning (Secondary)	2	T, C, O	S1	AQF level 7 bachelor degree with subjects in two teaching areas that link to the national school curriculum and/or the Queensland Curriculum and Assessment Authority.	114104	27
GRADUATE DIPLOMAS						
Graduate Diploma of Business Administration Global	1.4	O	Carousel	AQF level 7 bachelor degree in a cognate discipline plus two years business experience, or four years experience in a managerial role; or equivalent qualifications or practical experience.	300206	24
Graduate Diploma of Data Science	1.4	O	Carousel	AQF level 7 bachelor degree, or five years relevant industry experience in IT or data science; or other qualifications or practical experience.	300106	39
Graduate Diploma of Data Science (Internet of Things)	1.4	O	Carousel	AQF level 7 bachelor degree, or five years relevant industry experience in IT or data science; or other qualifications or practical experience.	300106	39
Graduate Diploma of Global Development	1	C, O	S1, S2	AQF level 7 bachelor degree; or equivalent qualifications or practical experience.	118206	42
Graduate Diploma of Health Professional Education	2*	O	S1, S2	Registration as a nurse, doctor of medicine or other health professional in Australia; AQF level 7 bachelor degree in a relevant discipline, with two years relevant experience; or equivalent.	107006	30
Graduate Diploma of Lifestyle Medicine	1	O	S1, S2	AQF level 7 bachelor degree in a health discipline.	122106	31
Graduate Diploma of Medical Science	1	T	S1, S2	AQF level 7 bachelor degree in biomedical sciences or cognate degree; or equivalent.	116107	20

Course	Duration (years)	Campus/ Mode	Intake	Prerequisites	Course Code	Page no.
Graduate Diploma of Midwifery	1.5*	T	S1	Registration as a nurse in Australia, and an AQF level 7 bachelor degree in a health-related field, or equivalent, and have concurrent placement arranged for a minimum 0.4FTE in a midwifery unit.	73907	32
Graduate Diploma of Nursing	1.4	O	Carousel	AQF level 7 bachelor degree in nursing, or equivalent, and Registered Nurse (Division 1) registration with the Australian Health Practitioner Regulation Agency (AHPRA).	300006	32
Graduate Diploma of Psychology (Bridging)	1.7	O	Carousel	AQF level 7 bachelor degree in any field other than psychology.	300306	34
Graduate Diploma of Psychology	1	T, S, O	S1	AQF Level 7 bachelor degree or bridging degree approved by the Australian Psychology Accreditation Council, completed in the past 10 years with a minimum GPA of 5.0 (65%); or equivalent.	15707	34
Graduate Diploma of Public Health and Tropical Medicine	1	T, O	S1, S2	AQF level 7 bachelor degree in a health-related discipline; or equivalent.	73707	37
Graduate Diploma of Rehabilitation	1	O	S1, S2	AQF level 7 bachelor degree in a relevant health discipline (general major); or completion of an AQF level 7 Bachelor of Physiotherapy, Occupational Therapy or Speech Pathology.	114807	19
Graduate Diploma of Research Methods Tropical Environments and Societies	1	T, C, S, O	S1, S2	AQF level 7 bachelor degree in a relevant discipline with a minimum GPA of 5.0 (credit average) in the final year; or equivalent.	114106	17
Graduate Diploma of Research Methods Tropical Health and Medicine	1	T, C, S, O	S1, S2	AQF level 7 bachelor degree in a relevant health, health science, medicine, medical science, or veterinary science discipline; with a minimum GPA of 5.0 (credit average) in the final year; or equivalent.	114206	17
Graduate Diploma of Rural Generalist Practice	1	O	S1, S2	AQF level 7 bachelor degree in a relevant health discipline more than two years prior to admission.	117506	19
Graduate Diploma of Science	1	T, C	S1, S2	AQF level 7 bachelor degree in science; or equivalent.	105006	41
Graduate Diploma of Surgical Anatomy	1	O	S1, S2	AQF level 7 bachelor degree in a health-related field, ongoing AHPRA registration; or be a current final-year student of a JCU MBBS program with a minimum 5.0 GPA.	113906	30
Graduate Diploma of Tropical Medicine and Hygiene	1	T, O	S1, S2	AQF level 7 bachelor degree in a relevant health discipline; or equivalent.	73807	38
GRADUATE CERTIFICATES						
Graduate Certificate of Aeromedical Retrieval	1*	O	S1, S2	AQF level 7 bachelor degree in a relevant health discipline plus two years postgraduate experience; or equivalent.	76511	36
Graduate Certificate of Business Administration	0.7*	T, B, S	T1, T2, T3	AQF level 7 bachelor degree, or a minimum of five years business experience; or equivalent qualifications or practical experience.	109011	21
Graduate Certificate of Business Administration Global	0.7	O	Carousel	AQF level 7 bachelor degree in a cognate discipline and two years business experience, or four years experience in a managerial role; or equivalent qualifications or practical experience.	300211	22
Graduate Certificate of Communicable Disease Control	0.5	O	S1, S2	AQF level 7 bachelor degree in health or closely related discipline; or at least 5 years' experience in a health profession.	119011	36
Graduate Certificate of Conflict Management and Resolution	1*	O	T1, T2, T3	AQF level 7 bachelor degree; or equivalent qualifications or practical experience.	23411	24
Graduate Certificate of Data Science	0.7	C	S1, S2	AQF level 7 bachelor degree, or five years relevant industry experience in IT or data science; or other qualifications or practical experience. Note: algebra & elementary differential calculus and a background in computing, data analysis or programming is assumed.	300111	39
		O	Carousel			
Graduate Certificate of Diabetes Education	0.7*	O	S1	AQF level 7 bachelor degree, or equivalent, in clinical-based health, allied health or relevant field, plus one year relevant practical experience.	113011	18

Campus/Mode: T = Townsville; C = Cairns, B = Brisbane, S = Singapore, O = Online.  
Intake: T = Trimester, S = Semester, Carousel = Subjects completed one at a time, maximum 6 per year.

\* Available as part-time study only.  
^ Not all majors available at all campuses/modes.  
# Semester 2 entry for part-time study only.  
## Trimester 2 and 3 entry available in Brisbane only.



Coursework degrees (continued)

Course	Duration (years)	Campus/ Mode	Intake	Prerequisites	Course Code	Page no.
Graduate Certificate of Disaster Health and Humanitarian Assistance	1*	C	S1, S2	AQF level 7 bachelor degree in a relevant health discipline; or equivalent.	76811	36
Graduate Certificate of Education	0.5	B	S1, S2	AQF level 7 bachelor degree; or cognate AQF level 8 qualification; or at least five years relevant industry experience.	35111	26
		O	T1, T2, T3			
Graduate Certificate of Global Development	0.5	C, O	S1, S2#	AQF level 7 bachelor degree; or equivalent qualifications or practical experience.	118211	42
Graduate Certificate of Health Professional Education	1*	O	S1, S2	Registration as a nurse, doctor of medicine or other health professional in Australia; or AQF level 7 bachelor degree in a relevant discipline with two years practical experience; or equivalent.	107011	30
Graduate Certificate of Human Services	0.5	O	S1, S2	AQF level 7 bachelor degree with one-year full-time study in social or behavioural sciences or equivalent.	122911	43
Graduate Certificate of Indigenous Studies	1*	T, C, O	S1, S2	AQF level 7 bachelor degree; or equivalent.	121411	42
Graduate Certificate of Infection Control	0.5	O	S1, S2	AQF level 7 bachelor degree in a medical, nursing or other health-related field; or at least five years experience in a health profession.	76711	18
Graduate Certificate of Information Technology	0.5	C, B, O	T1, T2, T3##	AQF level 7 bachelor degree; or equivalent qualifications or practical experience.	50311	28
Graduate Certificate of Lifestyle Medicine	0.5	O	S1	AQF level 7 bachelor degree.	122111	31
Graduate Certificate of Nursing	0.7	O	Carousel	AQF level 7 bachelor degree in nursing, or equivalent, and Registered Nurse (Division 1) registration with the Australian Health Practitioner Regulation Agency (AHPRA).	300011	32
Graduate Certificate of Project Management	0.5	T, B, O	T1, T2, T3	AQF level 7 bachelor degree; or equivalent qualifications or practical experience.	121111	25
Graduate Certificate of Psychology	0.7	O	Carousel	AQF level 7 bachelor degree in any field other than psychology.	300311	34
Graduate Certificate of Public Health	1*	O	S1, S2	AQF level 7 bachelor degree in a relevant health discipline; or equivalent.	101811	36
Graduate Certificate of Rehabilitation	0.5	O	S1, S2	AQF level 7 bachelor degree in physiotherapy, occupational therapy or speech pathology; or equivalent.	114811	18
Graduate Certificate of Research Methods Tropical Environments and Societies	0.5	T, C, S, O	S1, S2	AQF level 8 qualification in a relevant discipline with a minimum GPA of 5.0 (credit average) in the final year and a credit (65%) in one advanced research subject; or equivalent.	114611	17
Graduate Certificate of Research Methods Tropical Health and Medicine	0.5	T, C, S, O	S1, S2	Four year AQF level 7 bachelor degree or AQF level 8 qualification in a relevant health, health science, medicine, medical science or veterinary science discipline with a minimum GPA of 5.0 (credit average) in the final year and a credit (65%) in one advanced research subject; or equivalent.	114711	17
Graduate Certificate of Science	0.5	T, C	S1, S2	AQF level 7 bachelor degree in science; or equivalent qualifications with relevant professional experience.	53911	40
Graduate Certificate of Travel Medicine	1*	O	S1, S2	AQF level 7 bachelor degree in a relevant health discipline; or equivalent qualifications with relevant professional experience.	73511	38

Campus/Mode: T = Townsville; C = Cairns, B = Brisbane, S = Singapore, O = Online.  
Intake: T = Trimester, S = Semester,  
Carousel = Subjects completed one at a time, maximum 6 per year.

\* Available as part-time study only.  
^ Not all majors available at all campuses/modes.  
# Semester 2 entry for part-time study only.  
## Trimester 2 and 3 entry available in Brisbane only.

Research degrees

Course	Duration (years)	Campus/ Mode	Intake	Course code	Prerequisites
PROFESSIONAL DOCTORATES					
<b>Professional Doctorate</b> <i>Discipline:</i>	4		Open		AQF level 8 bachelor honours degree (1 or 2A) or postgraduate qualification, incl. one semester of supervised research with a distinction grade and one research methods subject; or AQF level 9 research master with two thirds supervised research and a thesis; plus demonstrated professional experience.
Education		T, C		111102	
Tropical Environmental Management		T, C		111702	
DOCTOR OF PHILOSOPHY					
<b>Doctor of Philosophy (PhD)</b> <i>Discipline:</i>	4		Open		AQF level 8 bachelor honours degree (1 or 2A) or postgraduate qualification, incl. one semester of supervised research with a distinction grade and one research methods subject; or AQF level 9 research master with two thirds supervised research and a thesis.
Agriculture, Environmental and Related Studies		T, C, S		110502	
Architecture and Building		T, C, S		110402	
Creative Arts		T, C		111002	
Education		T, C, S		110702	
Engineering and Related Technologies		T, C		110302	
Health		T, C, S		110602	
Indigenous		T, C		111902	
Information Technology		T, C, S		110202	
Management and Commerce		T, C, S		110802	
Medical, Molecular and Veterinary Sciences		T, C		111602	
Natural and Physical Sciences		T, C		110102	
Society and Culture		T, C, S		110902	
MASTER OF PHILOSOPHY					
<b>Master of Philosophy (MPhil)</b> <i>Discipline:</i>	2		Open		AQF level 7 bachelor degree with a minimum GPA of 5.5 in the final full-time year of study; or demonstrated research experience.
Agriculture, Environmental and Related Studies		T, C, S		110503	
Architecture and Building		T, C, S		110403	
Creative Arts		T, C		111003	
Education		T, C, S		110703	
Engineering and Related Technologies		T, C		110303	
Health		T, C, S		110603	
Indigenous		T, C		111103	
Information Technology		T, C, S		110203	
Management and Commerce		T, C, S		110803	
Medical, Molecular and Veterinary Sciences		T, C		111603	
Natural and Physical Sciences		T, C		110103	
Society and Culture		T, C, S		110903	

Campus/Mode: T = Townsville, C = Cairns, S = Singapore



# Application and fees information for postgraduate coursework programs

*Postgraduate study is one of the best investments you will ever make.*

## How to apply

Call 1800 246 446 or apply by following the links at [jcu.edu.au/applying-to-jcu](http://jcu.edu.au/applying-to-jcu)

## Tuition fees

Postgraduate study is an investment in your future and provides enhanced career opportunities.

Coursework students either pay tuition fees or a student contribution amount.

Australian citizens or permanent humanitarian visa holders can pay all or part of their fees upfront or defer payment.

[jcu.edu.au/domestic-postgraduate-fees](http://jcu.edu.au/domestic-postgraduate-fees)

## Scholarships, bursaries and grants

All students are encouraged to apply for scholarships, bursaries and grants. We offer internal JCU scholarships and grants, plus many external scholarships made available by government departments, business and industry groups.

[jcu.edu.au/scholarships](http://jcu.edu.au/scholarships)

## Student loans and financial assistance

There are also two main loan systems to help students with tuition fees:

- Commonwealth Supported Places and the associated loan (HECS-HELP)
- Domestic fee-paying places and the associated loan (FEE-HELP).

Youth Allowance, Austudy and ABSTUDY assistance may also be available to eligible students undertaking Masters by coursework study in approved courses.

[jcu.edu.au/feessupport](http://jcu.edu.au/feessupport)



## Commonwealth Supported courses

JCU is one of the Australian universities selected to offer Commonwealth Supported Places at postgraduate level. This means that the tuition fees in the courses that have Commonwealth Supported Places are subsidised by the Australian Government, so your upfront fees (which you can choose to defer through HECS-HELP) will be less.

### JCU COMMONWEALTH SUPPORTED COURSES

- Graduate Certificate of Business Administration
- Graduate Certificate of Communicable Disease Control
- Graduate Certificate of Conflict Management and Resolution
- Graduate Certificate of Diabetes Education
- Graduate Certificate of Disaster Health and Humanitarian Assistance
- Graduate Certificate of Global Development
- Graduate Certificate of Health Professional Education
- Graduate Certificate of Indigenous Studies
- Graduate Certificate of Infection Control
- Graduate Certificate of Lifestyle Medicine
- Graduate Certificate of Project Management
- Graduate Certificate of Public Health
- Graduate Certificate of Rehabilitation
- Graduate Certificate of Research Methods:
  - (Tropical Environments & Societies)
  - (Tropical Health & Medicine)
- Graduate Certificate of Science
- Graduate Diploma of Lifestyle Medicine
- Graduate Diploma of Medical Science
- Graduate Diploma of Midwifery
- Graduate Diploma of Psychology
- Graduate Diploma of Research Methods
  - (Tropical Environments & Societies)
  - (Tropical Health & Medicine)
- Graduate Diploma of Science
- Master of Clinical Exercise Physiology
- Master of Global Development
- Master of Guidance and Counselling
- Master of Lifestyle Medicine
- Master of Marine Biology
- Master of Psychology (Clinical)
- Master of Public Health
- Master of Public Health and Tropical Medicine
- Master of Public Health - Master of Global Development
- Master of Science
- Master of Science (Professional)
- Master of Social Science
- Master of Social Work (Professional Qualifying)
- Master of Teaching and Learning (Primary)
- Master of Teaching and Learning (Secondary)



# Application and fees information for higher degrees by research

## Graduate Research School

JCU's Graduate Research School (GRS) oversees all aspects of research degree candidature from application through to graduation, including assistance with scholarship programs.

[jcu.edu.au/grs](http://jcu.edu.au/grs)

### TO APPLY FOR A HIGHER DEGREE BY RESEARCH (HDR) AT JCU:

1. Identify a topic or area of interest
2. Visit Find an Advisor:

[jcu.me/find-an-advisor](http://jcu.me/find-an-advisor)

to determine if JCU has the required expertise, and identify a potential Primary Advisor (supervisor) in your area of interest

3. Contact your potential Advisor by lodging an Expression of Interest
4. Work with your Advisor to develop and submit an online application.

You can submit an application at any time of the year. For further information, including how to find a potential Advisor, how to submit an Expression of Interest and a step-by-step guide to the application process, please visit:

[jcu.edu.au/graduate-research-school/how-to-apply](http://jcu.edu.au/graduate-research-school/how-to-apply)

## Fees and financial assistance

Australian citizens and permanent residents are Commonwealth supported under the Federal Government's Research Training Program (RTP). Eligible candidates may receive tuition fee exemption, a stipend and allowances for the normal duration of an accredited research course under the scheme.

All HDR candidates are required to pay the students services and amenities fee.

## Scholarships

JCU offers many competitive scholarships for higher degree by research candidates, including Research Training Program scholarships, JCU Postgraduate Research scholarships and the AIMS@JCU scholarships.

Each of these scholarships provides a stipend to assist with living costs and may include an exemption from tuition fees.

For more information, including how scholarship applications are evaluated and the application process, visit:

[jcu.edu.au/grs/scholarships](http://jcu.edu.au/grs/scholarships)



# History of JCU

From ground-breaking research and discoveries to milestones in education, JCU is continually growing and forging a brighter future for the Tropics.

## 1950s

### The beginning

12 October 1958. The Queensland Minister for Education, The Honourable Jack Pizzey, announces the Queensland Government will open a University College in Townsville.



## 1957

### A regional university is proposed

Professor J.D Story, Vice Chancellor of the University of Queensland proposes a regional university college be established.



## 1960s

### A strong foundation

In 1960, the State Cabinet announces that a University College will be established in Townsville. In 1961, the University College of Townsville was officially opened. On 2 March 1964, John Hayes becomes the first student to graduate, receiving a Bachelor of Arts.



## 1966

### Foundation for Australian Literary Studies begins

Professor Colin Roderick establishes the Foundation for Australian Literary Studies, as well as inaugurating a lecture series and an annual book award. The Colin Roderick Award is valued at \$20,000 and recognises the best Australian book of the year that deals with any aspect of Australian life.



## 1970s

### A royal visit and the first JCU graduates

Queen Elizabeth II officiated the establishment of JCU on 20 April 1970. Following the passing of the James Cook University of North Queensland Bill 1969. The first cohort to fully study at JCU graduates in 1973.



# Celebrating 50 years

## 1977

### Cyclone Testing Station established

The Station aims to minimise the loss and suffering caused by cyclones and other high wind events, as well as providing advice to governments, manufacturers, and property owners. The Station is founded in response to the destruction caused by Cyclone Althea to Townsville in 1971 and Cyclone Tracy to Darwin in 1974.



## 1980s

### Moving north and Queen's Birthday Honours

JCU Cairns opens its doors and the University celebrates 25 years in Townsville. Vice-Chancellor Professor Ken Back is made an Officer of the General Division of the Order of Australia in the Queen's Birthday Honours list in 1984.



## 1981

### Land rights challenge

The politically active JCU Student Union organises the *Land Rights and the Future of Australian Race Relations Conference* at the Douglas campus, putting future events in motion. After speaking at the conference, Eddie Koiki Mabo leads a group of Mer Islanders in taking their case to court; they will go on to challenge Crown ownership of Mer.



## 1990s

### The Mabo Legacy and broadening educational horizons

In 1992, Eddie Koiki Mabo passes away just months before the Mabo v Queensland case is decided. The High Court's historic decision overturned the legal doctrine of *terra nullius*. In 1992, JCU Mackay opens. In 1995 JCU Cairns relocates to its current Smithfield site. In 1997, JCU Mount Isa is established as a centre for population health, education and research.



## 1990

### First cohort of nurses

JCU accepts its first cohort of nurses. The Department of Nursing was the University's first undergraduate health science department and the first university school of nursing in the Tropics in Australia. In 1991 JCU constructed a dedicated Nursing Science building.





Visit [jcu.edu.au/timeline](https://jcu.edu.au/timeline) to explore more events in JCU's rich history.

## 2000s

### Growth and opportunity

JCU opens a Medical School in 2000, commences operations in Singapore in 2003, and is named in the top 500 Universities in the World in the Shanghai Jiao Tong world ranking.



## 2008

### JCU Library named after Eddie Koiki Mabo

JCU launches its Reconciliation Statement and names the Townsville campus library the "Eddie Koiki Mabo Library" in recognition of the significant contribution he made for Australian Aboriginal and Torres Strait Islander Land Rights.



## 2010s

### Reconciliation in action

A May 2013 commitment by the JCU Vice Chancellor led to the development of the first Reconciliation Action Plan. The Indigenous Education and Research Centre launches.



## 2012

### 20th anniversary of the historic Mabo Decision

JCU commemorates the 20th anniversary of the historic Mabo Decision with a series of events including a public lecture titled **Mabo - 20 Years on. Did it change the Nation?** The lecture was presented by Professor Henry Reynolds who, along with fellow-academic Noel Loos, built a relationship with Dr Mabo at JCU Townsville in the 1970s.



## 2014

### First State of the Tropics report

State of the Tropics is a global alliance of institutions working towards a brighter future for the Tropics. After discussions beginning in 2011, the first State of the Tropics report is released in 2014. In 2016, the United Nations General Assembly declares 29 June of each year be observed as the International Day of the Tropics.

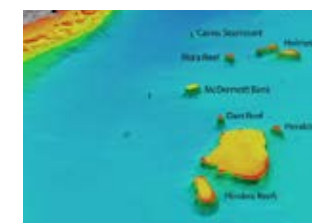


# Celebrating 50 years

## 2015

### 3D satellite mapping of reefs

JCU researchers in Cairns complete detailed 3D depth maps of Australia's Coral Sea reefs, shedding new light on the likely distribution of coral diversity and sea life in the area. Dr Robin Beaman said mapping the reefs and their underwater landscape had always been a challenge, because their remote locations and shallow nature made it difficult to use modern surveying techniques.



## 2017

### JCU recognised as No. 1

JCU is recognised as number one in the world for Marine and Freshwater Biology and number two in the world for Biodiversity Conservation by the Center for World University Rankings (CWUR).



### An Australian first at JCU

JCU launches Australia's first Internet of Things degree in 2016, and in 2017 opens Australia's first NarrowBand Internet of Things (NBloT) research lab in Cairns. "The Internet of Things is based on something that is central to our mission in the Tropics: building a greater connectivity between people, place, and technology," JCU Vice Chancellor Professor Sandra Harding said.



## 2020s

### A celebration

For over fifty years, JCU graduates have helped shape the future in classrooms, in hospital wards, and throughout communities, both in Australia and internationally. After being postponed for a year due to COVID-19, graduation ceremonies proceeded in both Cairns and Townsville.



## 2021

### Eddie Koiki Mabo awarded Honorary Doctorate

The late Eddie Koiki Mabo is awarded an Honorary Doctorate in recognition of his outstanding service and distinguished public campaign to improve the rights and wellbeing of his people. Chancellor Bill Tweddell is pictured with Dr Mabo's daughter, Gail, who accepts the doctorate on behalf of her late father.





# Research excellence

A defining feature of JCU is its research excellence in disciplines of particular relevance to the Tropics.

Excellence in Research for Australia (ERA) rated JCU's research in 83 per cent of fields as world-class or above, including every field of research in medical and health sciences at JCU<sup>1</sup>.

JCU received the highest possible rating, well above world standard, in eight research areas:

- Environmental science and management
- Ecology
- Geology
- Ecological applications
- Plant biology
- Medical microbiology
- Fisheries sciences
- Organic chemistry

This now makes JCU the only Australian university to be recognised by ERA at the highest level in every assessment within the environmental science and management research category since 2010.

Our research contributions that make a difference to tropical environments and societies have also earned JCU recognition as the number one university in the world for Marine and Freshwater Biology and number two in the world for Biodiversity Conservation<sup>2</sup>.

## JCU Cairns

- Advanced Analytical Centre
- Australian Institute of Tropical Health and Medicine
- Australian Tropical Herbarium
- Cairns Institute
- Centre for Molecular Therapeutics
- Centre for Tropical Bioinformatics and Molecular Biology
- Centre for Tropical Environmental and Sustainability Science
- Indigenous Education and Research Centre
- JCU Ideas Lab
- Language and Culture Research Centre
- World Health Organisation Collaborating Centre for Nursing and Midwifery Education and Research Capacity Building

## JCU Singapore

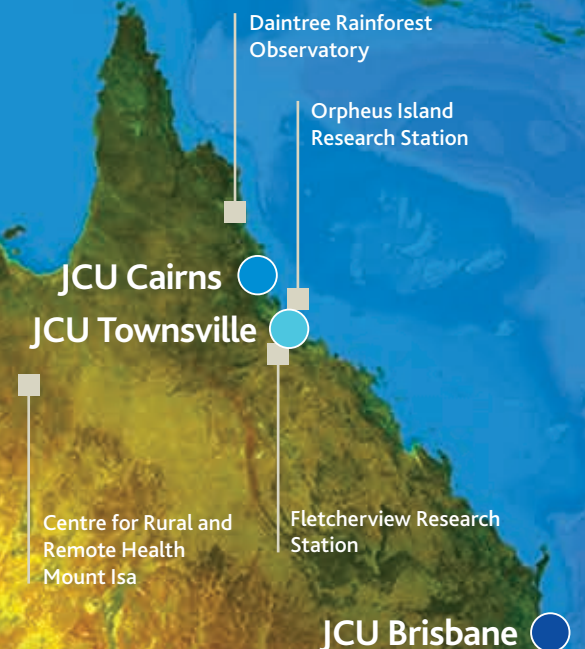
- Centre for International Trade and Business in Asia
- Tropical Futures Institute

## JCU Townsville

- Agriculture Technology and Adoption Centre
- AIMS@JCU
- Anton Breinl Research Centre for Health System Strengthening
- Australian Institute of Tropical Health and Medicine Boating and Diving
- Australian Research Council Centre of Excellence for Coral Reef Studies
- Australian Research Council Industrial Transformation Research Hub for Advanced Prawn Breeding
- Centre for Disaster Studies
- Centre for Nursing and Midwifery Research
- Centre for Sustainable Tropical Fisheries and Aquaculture
- Centre for Tropical Water and Aquatic Ecosystem Research
- Comparative Genomics Centre
- Cooperative Research Centre for Developing Northern Australia
- Cyclone Testing Station
- Economic Geology Research Centre
- eResearch Centre
- Indigenous Education and Research Centre
- Marine and Aquaculture Research Facility
- Queensland Research Centre for Peripheral Vascular Disease
- World Health Organisation Collaborating Centre for Vector-borne and Neglected Tropical Diseases



JCU Singapore





# Daintree Rainforest Observatory

The Daintree Rainforest Observatory is located in lowland tropical rainforest at Cape Tribulation, around 3 hours' drive north of Cairns. It is a unique part of the world, where two World Heritage areas meet.



At the Daintree Rainforest Observatory, JCU monitors one hectare of rainforest to gather data for research use with automated sensors and a wireless data network.

Measurement facilities in the survey area include dendrometers, sap flow meters, soil moisture pits, leaf litter traps, weather stations and cameras.

It is the only field station in Australia operating a rainforest canopy crane, and is one of only five long-term ecological monitoring sites in Australia.

JCU's canopy crane makes it possible to view the rainforest from above the canopy, through its different levels, and down to the soils and subterranean water resources.

The observatory offers accommodation, one open-air teaching laboratory and one standard air-conditioned laboratory.



[jcu.edu.au/daintree](http://jcu.edu.au/daintree)

# Fletcherview Research Station

Fletcherview Research Station is a massive 1,960 hectare working cattle station, around 2 hours' drive southwest of Townsville in a major cattle producing area.



Students and researchers in tropical agriculture and veterinary science have access to industry-standard livestock handling facilities at Fletcherview, for studies in areas like animal reproduction, nutrition and pasture monitoring.

The station's size and diversity of land types, plant and animal species also attracts researchers in animal immunology, biology, botany, geology, and tropical agriculture.



[jcu.edu.au/fletcherview](http://jcu.edu.au/fletcherview)



# Orpheus Island Research Station

The Orpheus Island Research Station offers easy access to the Great Barrier Reef's inshore reefs and islands. A known 1,100 species of fish and 340 of the 350 known species of reef coral can be found in the underwater gardens of the surrounding reefs.



Orpheus Island comprises 1,368 hectares of dry woodlands, scattered rainforest gullies, grasslands, granite outcrops, beaches and bays.

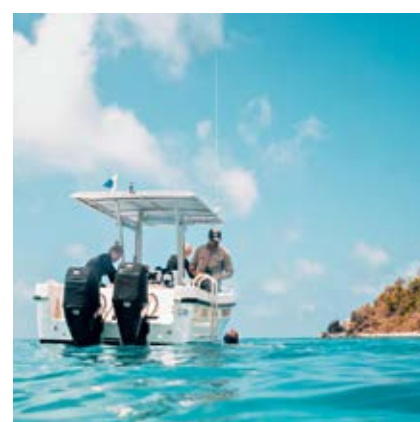
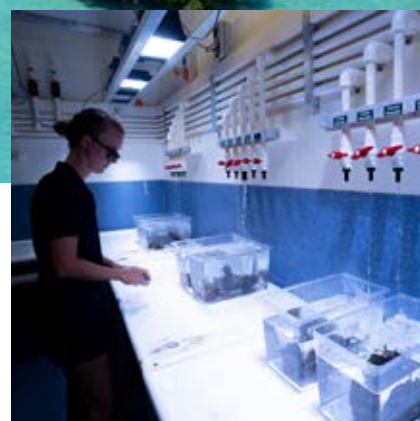
Exploring the waters around the island reveals a number of historic shipwreck sites and marine habitats including fringing and mid-shelf reefs.

At Pioneer Bay on the western side of the island, JCU's teaching facilities include a lecture theatre with multimedia capabilities, wireless internet, laboratory and testing equipment, a reference library and a huge coral reef display tank.

Scientific resources include climate-controlled research rooms, wet laboratories, a versatile saltwater aquarium system, and six aquarium raceways.

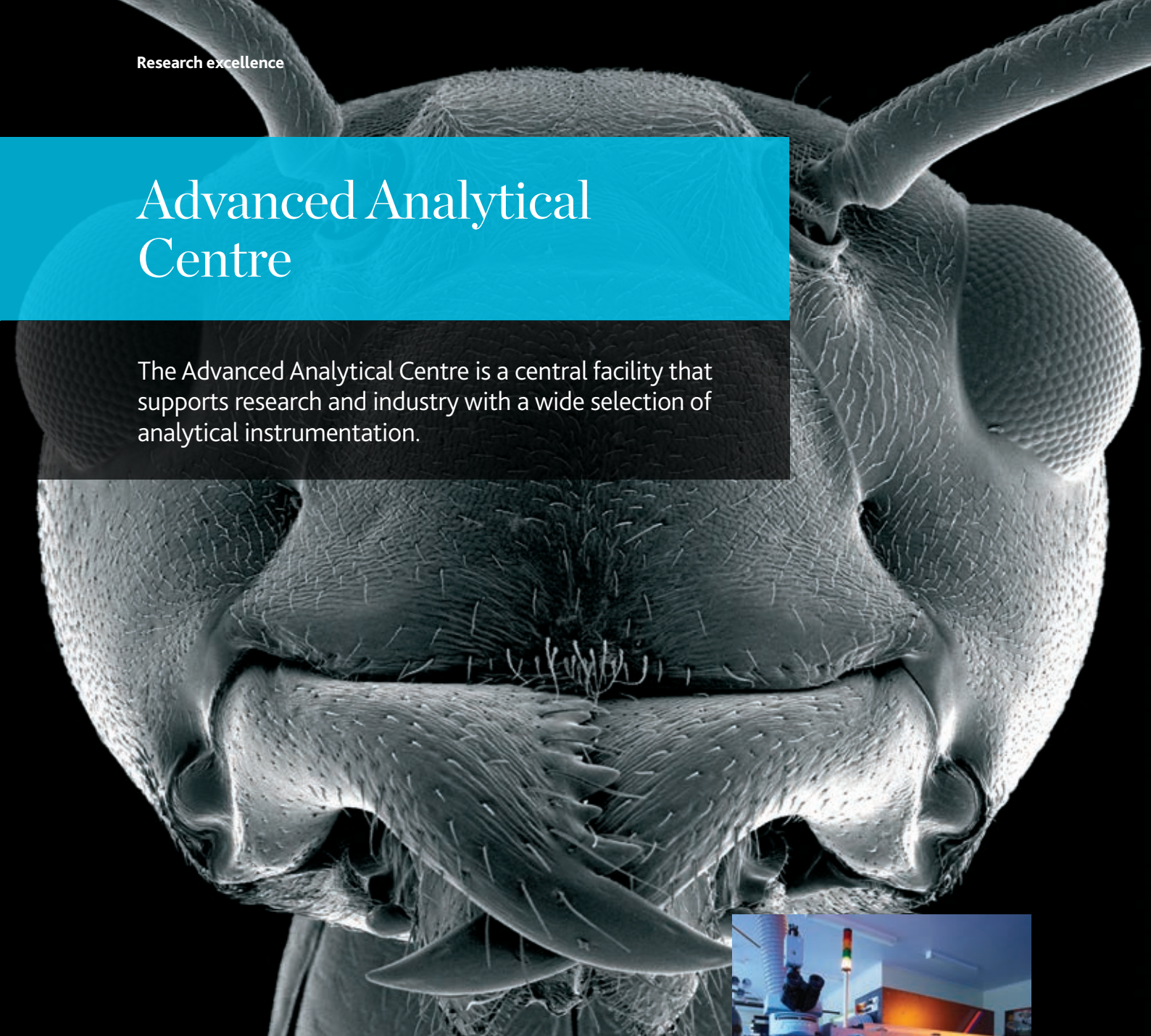
Students regularly visit Orpheus Island to study the diverse fauna, particularly on the sand and rubble intertidal reef flat, as well as investigating fauna associated with the mangrove community.

[jcu.edu.au/oirs](http://jcu.edu.au/oirs)



# Advanced Analytical Centre

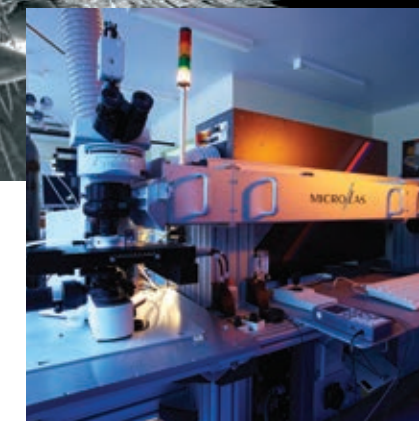
The Advanced Analytical Centre is a central facility that supports research and industry with a wide selection of analytical instrumentation.



The centre provides access to specialised instruments and techniques used in microscopy and microanalysis, inorganic and organic chemical analysis, mineralogy/crystallography and genetic analysis.

It is supported by highly experienced staff and has projects ranging from the analysis of the oldest rocks on Earth to corrosion of medical implants, and from reef ecosystems to archaeological artefacts.

It also offers services from sample preparation through to final analysis and reporting, plus expert training in instrument use.



[jcu.edu.au/aac](http://jcu.edu.au/aac)



# AIMS@JCU

AIMS@JCU is a strategic alliance between JCU and the Australian Institute of Marine Science (AIMS). It integrates strengths, synergies, infrastructure, and expertise in world-class tropical marine research capacity.



AIMS is the Australian Government's tropical marine research agency. AIMS@JCU is strategically focused on the AIMS research plan, which addresses national and international research priorities and skills gaps, to advance the global knowledge required to understand and sustainably manage marine resources.

AIMS@JCU informs government policy and improves the global knowledge and tools required to understand and sustainably manage marine resources. It also makes a significant contribution to training the next generation of marine science leaders equipped with expertise of most relevance to meet real-world challenges.

*Global coral bleaching event – AIMS RV Cape Ferguson at Coates Reef conducting coral bleaching surveys. Six cameras mounted on a pole were recording at the same time to capture the scene.*

[aims.jcu.edu.au](https://aims.jcu.edu.au)



# ARC Centre of Excellence for Coral Reef Studies

The ARC Centre of Excellence for Coral Reef Studies is the world leader in integrated research for sustainable use and management of coral reefs.



It brings together the world's largest collective of coral reef scientists, helping to strengthen collaborative links between major partners and with 24 other leading institutions in nine countries.

The centre is a partnership of JCU, the Australian Institute of Marine Science, The Australian National University, the Great Barrier Reef Marine Park Authority, The University of Queensland, and The University of Western Australia.

*Professor Joshua Cinner, Chief Investigator, ARC Centre of Excellence for Coral Reef Studies and winner of the 2017 Elinor Ostrom Award, interviews PNG fishermen about adapting to changing social and environmental conditions.*

<https://www.coralcoe.org.au/>





# Australian Institute of Tropical Health and Medicine

The Australian Institute of Tropical Health and Medicine (AITHM) is a significant tropical health and medical research institute based at JCU.

AITHM is focused on Australia's health security and improving the efficacy of healthcare delivery and health outcomes for the communities of northern Australia and neighbouring tropical nations.

It aims to address the gaps that exist between research and scientific expertise, health policy and implementation.

AITHM contributes to the growth and development of the North Queensland economy through new commercial ventures including industry development in pharmaceutical formulation, manufacturing and biotechnology.

In Australia, JCU's partnerships through AITHM include the Tropical Australian Academic Health Centre and Northern Queensland Primary Health Network.

[aithm.jcu.edu.au](http://aithm.jcu.edu.au)

# The Cairns Institute

The Cairns Institute brings together the expertise and intellectual resources of more than 20 disciplines in humanities and social sciences, creating a vibrant hub for research, capacity building and public debate, relevant to tropical societies.

The Cairns Institute is committed to understanding and informing critical processes of social and environmental transformation. Its location in tropical North Queensland and proximity to neighbouring countries in the Pacific and Southeast Asia offers unique opportunities to enhance human life in the tropics and contribute to a brighter, more equitable, and enriching future for its peoples.

The institute's work is organised around five themes:

- Creative Ecologies
- Cultural Transformations
- Indigenous Futures
- Social and Environmental Justice
- Sustainable Development.

[cairnsinstitute.jcu.edu.au](http://cairnsinstitute.jcu.edu.au)





# eResearch Centre

The eResearch Centre brings IT professionals and the community together to harness the power of technology and advance knowledge of the Tropics.



The eResearch Centre supports data-intensive research projects featuring big data analytics, precision agriculture, conservation management, and environmental and urban technology applications.

Its outreach programs promote the use of advanced IT infrastructure, bringing eResearch to schools, communities and governments through local projects, workshops and seminars.

The centre also provides computing, access and information support for projects and can develop tailored technology solutions to help address specific research challenges.

[eresearch.jcu.edu.au](http://eresearch.jcu.edu.au)



# JCU Ideas Lab

The JCU Ideas Lab is a research and development hub that provides practical pathways for students, researchers and the broader community to develop as innovators and entrepreneurs.



The lab houses facilities to create, prototype, test, develop and scale innovative technologies, products and business concepts.

Less formally, the JCU Ideas Lab can help guide entrepreneurs and researchers with interesting solutions to address gaps in critical industries where they can make a significant impact.

The aim is to help develop high-potential ventures or technologies with real commercial application that can drive economic growth and diversity for northern Australia.



[jcu.edu.au/ideaslab](http://jcu.edu.au/ideaslab)



# Marine and Aquaculture Research Facility

The Marine and Aquaculture Research Facility is JCU's central facility for research and testing in aquaculture, marine biology and algal studies.

At any one time, the facility supports a diverse portfolio of research projects on various species of fin fish, coral, algae, crustaceans, squid, holothurians, molluscs and bivalves.

It features eight large recirculating marine water systems supplying outdoor, undercover and indoor lab areas as well as 21 indoor temperature-controlled research labs, 11 of which have their own dedicated recirculating life support systems for high-resolution or specifically modified research projects.



## Apply to JCU



Email us at:  
[enquiries@jcu.edu.au](mailto:enquiries@jcu.edu.au)



Apply online:  
[jcu.edu.au/applying-to-jcu](http://jcu.edu.au/applying-to-jcu)

JCU Student Centre is your number one point of contact. JCU advisors will provide advice on courses and careers, subjects, fees, support services and scholarships.

Townsville: 07 4781 5255  
Cairns: 07 4232 1000  
Freecall (within Australia): 1800 246 446  
Email: [enquiries@jcu.edu.au](mailto:enquiries@jcu.edu.au)

Stay social #jculife



© James Cook University, Marketing, 2023

Print: Printcraft

Photography: 123RF, Andrew Rankin, Brad Newton, iStockphoto, Kerry Trapnell, NASA, Orpheus Island Resort, Paul Dymond, Matt Curnock, Luka Kauzlaric, Nicki Zieth, Shutterstock, Steven Nowakowski, Steve Rutherford, Through the Looking Glass Photography, Tourism Queensland, Amber Hill, Kate Hutson

This publication is intended as a general guide for domestic students only. Prospective domestic students and all international applicants should contact the University to confirm admission requirements and the availability of courses.

Information is correct at the time of printing.

James Cook University reserves the right to alter any course or admission requirement without prior notice. Check for updates at [jcu.edu.au](http://jcu.edu.au)

James Cook University CRICOS Provider code 00117J.

Content: Pacesetter coated, satin, 90gsm

Cover: Maine recycled, silk, 250gsm





Ready today  
for tomorrow



[jcu.edu.au](http://jcu.edu.au)



JAMES COOK  
UNIVERSITY  
AUSTRALIA