

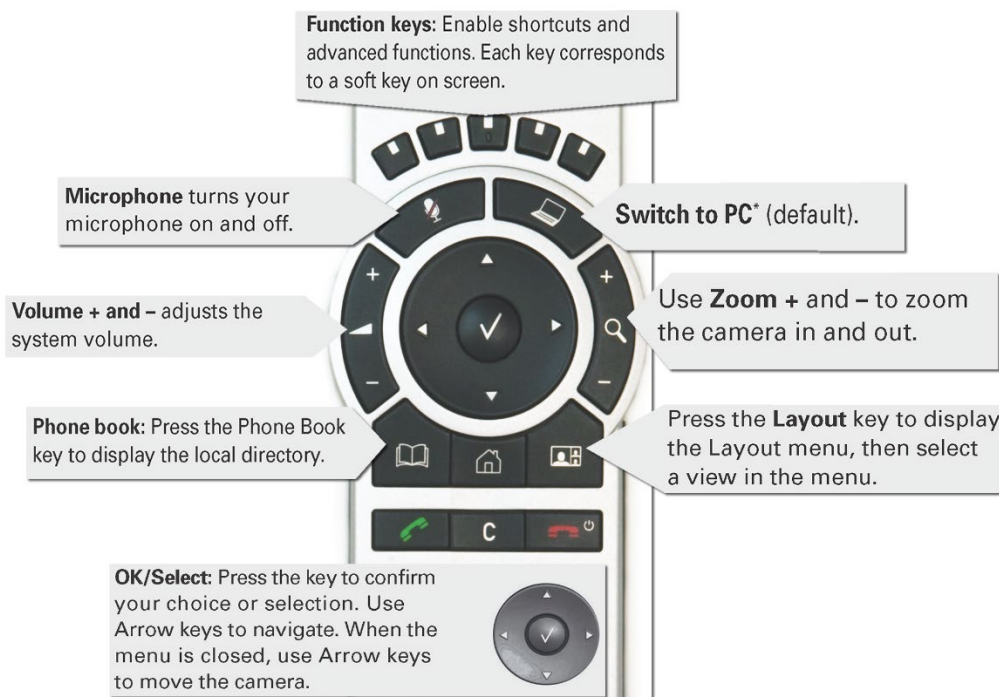
## System Components

The following equipment is connected to the AV system:

- 3x Flat panel displays
- All-in-1 desktop PC
- Document camera/visualizer
- Videoconference codec with 2 HD cameras and Cisco Remote control
- Lecture Capture (Mediasite)
- Microphone – lectern & ceiling
- HDMI and Mini Display Port cables

## Cisco Remote Control

The Cisco Remote Control is used for all interaction with the AV system



### Log in to desktop PC

Use the JCU issued username and your password

### Duplicate desktop PC display

Hold down the Windows key and press the P-key on the keyboard to access the PC display settings. Select 'Duplicate' on the floating menu. To show PowerPoint with notes, select 'Extend' from the floating menu.

## Mediasite Lecture Capture

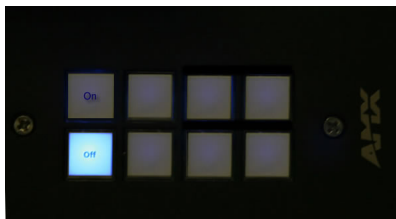
**Audio** – the presenter’s desk microphone is permanently connected to the AV system and is used to record the presenter’s voice.

**Presenter Video** - the presenter camera is by default selected as the recorded camera stream and changing to the audience camera will not change that. Ensure the camera is set at an angle to cover all the anticipated movements.

**Presentation** - press the **Switch to PC** key on the Cisco remote to add a computer presentation to the recording.

## Local Presentation

### AVControl



Press the **On** button to turn on the three flat panel displays.

### Show Desktop PC

Briefly press the **Switch to PC** key on the Cisco remote. We recommend using VLC media player on the desktop PC to play downloaded material

### Show Laptop

Connect the appropriate cable and enable the laptop's dual display (Duplicate or Mirror) and briefly press the **Switch to PC** key.

### Show visualizer/document camera

Press & hold the **Switch to PC** key. A dropdown menu appears on the panel to the left. Select **Doc Cam** and press the **OK/Select** key (tick).

---

## Videoconferencing

Activate the AV system by picking up the Tandberg remote. If a menu appears in the bottom left corner, click the Arrow left key to close it.

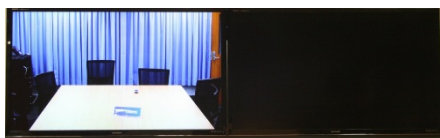


Press the pan, tilt or zoom keys to adjust the camera settings.

A picture-in-picture showing the current camera angle is shown at bottom right. Close the camera angle preview, by pressing the Exit button (the actions of the five function keys along the top of the remote, correspond to a soft key visible along the bottom of the flat panel).

## Connect a Conference Call

Conference calls are scheduled by VAVS. To connect a conference manually, press the phone book key, navigate to the room/addressee in question and press the connect key (green handset).



The far end will appear on the left screen once the call is connected.

## Videoconference Presentation



See the instruction for a local presentation, the presentation will appear on the right screen.

## Support

AV Technical support Cairns:	Ext. 21700
AV Technical support Townsville:	Ext. 14643
Mediasite content:	mediasite@jcu.edu.au
Computers:	Ext. 21777
A/C or electrical faults:	Mex
Security:	Ext. 21293