

2023

# Undergraduate Study Guide



JAMES COOK  
UNIVERSITY  
AUSTRALIA

NO. **1**  
in QLD for full-time  
employment<sup>1</sup>

NO. **1**  
in Australia for  
sustainable education<sup>2</sup>

NO. **1**  
in QLD for regional, rural and  
remote health professionals<sup>3</sup>

[jcu.edu.au](http://jcu.edu.au)



# Why JCU?

Explore the world of undergraduate study at JCU:

- Learn from leading industry professionals
- Be empowered to succeed with academic support
- Develop skills in the latest modern facilities
- Gain real world experience
- Achieve exceptional employment outcomes
- Benefit from small class sizes
- Connect with professional networks
- Access financial support and scholarships
- Discover great accommodation options



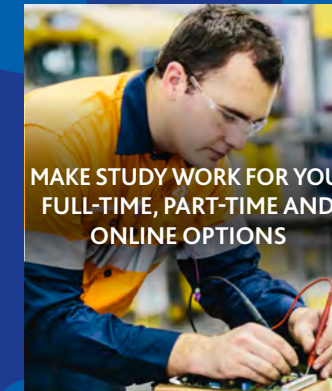
JCU DAINTREE  
RAINFORREST OBSERVATORY

TOP **22**  
UNIVERSITIES  
IN AUSTRALIA<sup>12</sup>

RESEARCH  
CONNECTIONS TO  
**124**  
COUNTRIES

**6**  
HIGHLY CITED  
RESEARCHERS<sup>7</sup>

FUTURE INVESTMENT:  
**\$1.9**  
BILLION<sup>8</sup>



MAKE STUDY WORK FOR YOU.  
FULL-TIME, PART-TIME AND  
ONLINE OPTIONS

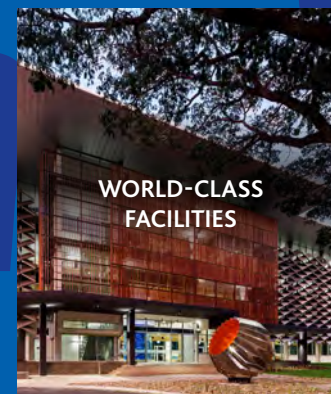
'WORLD CLASS  
OR HIGHER'  
IN **83%**  
OF RESEARCH FIELDS<sup>9</sup>

NO. **1**  
IN QLD FOR  
FULL-TIME EMPLOYMENT<sup>1</sup>

NO. **1**  
IN AUSTRALIA FOR  
SUSTAINABLE EDUCATION<sup>2</sup>

TOP **100**  
IN THE WORLD FOR EARTH  
AND MARINE SCIENCES<sup>4</sup>

NO. **5**  
IN THE WORLD FOR  
THE UNITED NATIONS'  
SUSTAINABLE  
DEVELOPMENT GOAL  
OF GOOD HEALTH AND  
WELLBEING<sup>5</sup>



WORLD-CLASS  
FACILITIES

NO. **1**  
IN QLD FOR  
STARTING SALARY<sup>1</sup>



THE CAIRNS INSTITUTE

**784**  
CURRENT RESEARCH  
CONTRACTS<sup>10</sup>



HANDS-ON LEARNING



AUSTRALIAN INSTITUTE  
OF TROPICAL HEALTH  
& MEDICINE

**20,308**  
STUDENT  
ENROLMENTS



JCU ORPHEUS ISLAND  
RESEARCH STATION

**4,116**  
EMPLOYEES



THE ARC CENTRE OF  
EXCELLENCE FOR CORAL  
REEF STUDIES

TOTAL RESEARCH INCOME:  
**\$67.4**  
MILLION<sup>11</sup>

SCHOLARSHIPS  
SUPPORT FOR YOUR  
SUCCESS

★★★★★  
FOR FULL-TIME  
EMPLOYMENT, STARTING  
SALARY, STUDENT  
TEACHER RATIO<sup>1</sup>

ON-CAMPUS  
ACCOMMODATION  
FOR OVER  
**1,600**  
STUDENTS



OPENING DOORS TO  
OPPORTUNITY WITH  
INDUSTRY AND RESEARCH

NO. **3**  
IN THE WORLD FOR  
ECOLOGY AND  
EVOLUTION RESEARCH<sup>6</sup>



**25**  
JCU SPECIALISED  
RESEARCH CENTRES  
AND INSTITUTES

**12**  
DISTINGUISHED  
PROFESSORSHIPS

JCU'S CONTRIBUTION TO  
HUMAN CAPITAL:  
**\$1.75**  
BILLION<sup>8</sup>



JCU FLETCHERVIEW  
RESEARCH STATION

ASSETS:  
**\$1.3**  
BILLION<sup>8</sup>



# JCU: Ready today for tomorrow

Construction has commenced on our new \$94m JCU Technology Innovation Complex at the Bebegu Yumba campus, Douglas. The four-story building will be the centrepiece of an innovation hub where engineering and IT students, industry partners and researchers will meet and collaborate.

## Contents

Vice Chancellor's welcome..... 4

### OUR LOCATIONS

JCU Brisbane..... 6  
JCU Cairns ..... 8  
JCU Singapore ..... 10  
JCU Townsville ..... 12  
JCU Study centre network ..... 14

### STUDENT LIFE

Information for parents and partners ..... 15  
From Year 12 to university - guaranteed ..... 16  
Campus life ..... 18  
Accommodation ..... 20

### INDIGENOUS EDUCATION AND RESEARCH CENTRE

Indigenous studies and support ..... 22

### APPLYING TO JCU

Investing in your future ..... 24  
Pathways to JCU ..... 26  
Apply to study at JCU ..... 28  
Common university terms ..... 30

### EXCHANGE OPPORTUNITIES

JCU Global Experience ..... 31

### STUDY AREAS

Find your study path ..... 32

Arts and Social Sciences..... 34

Biomedicine ..... 38  
Business and Commerce ..... 40  
Dentistry..... 43  
Education..... 44  
Engineering ..... 46  
Environmental Management ..... 48  
Geoscience ..... 50  
Information Technology ..... 52  
Law ..... 54  
Marine Science ..... 56  
Medicine ..... 57  
Nursing and Midwifery ..... 58  
Occupational Therapy ..... 60  
Pharmacy..... 61  
Physiotherapy ..... 62  
Planning ..... 63  
Psychology ..... 64  
Science ..... 65  
Social Work ..... 68  
Speech Pathology ..... 70  
Sport and Exercise Science ..... 71  
Veterinary Science ..... 72

### DEGREE AND DIPLOMA OVERVIEW

2022 Undergraduate degrees and diplomas table ..... 74

### FURTHER INFORMATION FOR SCHOOL LEAVERS

Prerequisite subject equivalents ..... 78  
International Baccalaureate Diploma ..... 79

### TIMELINE

JCU Celebrating 50 years ..... 80

### WORLD-CLASS FACILITIES

Research Excellence..... 84  
Daintree Rainforest Observatory ..... 86  
Fletcherview Research Station ..... 87  
Orpheus Island Research Station ..... 88  
Advanced Analytical Centre ..... 89  
AIMS@JCU ..... 90  
ARC Centre of Excellence for Coral Reef Studies ..... 91  
Australian Institute of Tropical Health and Medicine ..... 92  
The Cairns Institute ..... 93  
eResearch Centre ..... 94  
JCU Ideas Lab ..... 95  
Marine and Aquaculture Research Facility ..... 96



# Welcome to James Cook University

*Education is vital to our shared future. It is only through education that we deepen our understanding of the world, gathering the skills needed to use knowledge effectively and grow as people able to contribute to society and shape a brighter future. Education also provides a route to access more challenging and rewarding careers. Yet education is also so much more: It can let us dream, explore exciting new concepts, have fun, and make lifelong friends.*



Our commitment to you is that JCU is about all these things. We are also about great student experiences and exceptional academic and career outcomes. All Australian universities will make the same promises, but with JCU there is one big difference. While you study you can experience authentic learning in our own backyard across the Great Barrier Reef, Daintree Rainforest, and the great Australian outback. You can also work with regional and remote communities, explore ecosystems as living laboratories, or work in areas where climate change and the awesome power of nature are both fearsome and challenging. That's why JCU is Uni, but not as you know it.

For over 50 years, JCU has helped create that brighter future through education and research that makes a difference. We are committed to bringing together our natural world, the built environment, people and societies, through experiential learning. We do so with a view to living the United Nations' Sustainable Development Goals and were ranked #5 in the world<sup>1</sup> for our commitment to good health and wellbeing. Other accolades include being in the world's top 25 universities for ecology<sup>2</sup>, the top 100 for earth and marine science and environmental science<sup>3</sup>, and being independently rated five stars for starting salary, full-time employment and student teacher ratio<sup>4</sup>. These achievements are hard earned and a tribute to the

commitment of academics and professional staff in supporting students on their journey to becoming well-rounded graduates.

As you explore this guide, consider the opportunities available to you and how they might enable your journey of discovery. We are committed to you having a student experience that is life changing, whether it is in one of the most fascinating places in the world or online in the comfort of your own home. One in which you develop the skills, build your knowledge, and gain the confidence to launch your career. During times of uncertainty, education increases in its importance to you and your community.

Thank you for taking the time to explore JCU. We look forward to working with you to create a brighter future that makes a difference.

Professor Simon Biggs  
Vice Chancellor and President

## Important dates

### Study dates 2023 (Cairns and Townsville)

#### Teaching period one 2023 (Semester one)

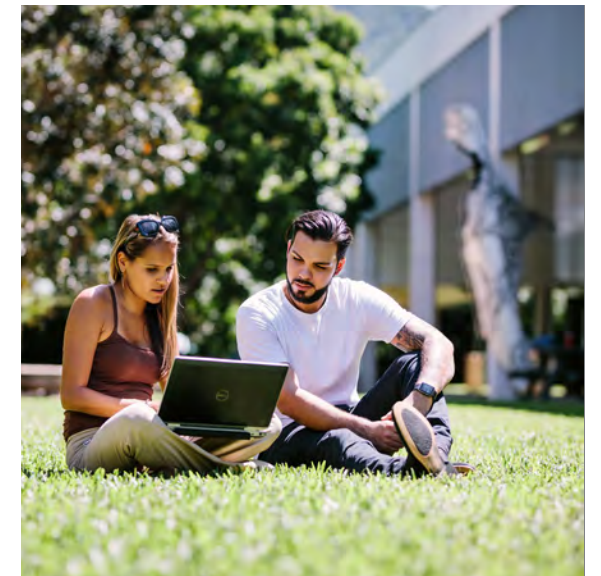
Orientation (O Week)	13 - 17 February
Classes begin	20 February
Mid semester break	10 - 14 April
Classes end	26 May
Exam period	5 - 16 June

#### Teaching period two 2023 (Semester two)

Orientation (O Week)	17 - 21 July
Classes begin	24 July
Mid semester break	25 - 29 September
Classes end	27 October
Exam period	6 - 17 November

For more important dates and academic calendars, please visit [jcu.edu.au/students/important-dates](https://jcu.edu.au/students/important-dates)

To register for a campus tour, please visit [experience.jcu.edu.au/oncampus](https://experience.jcu.edu.au/oncampus)



# RESPECT. NOW. ALWAYS.

James Cook University values and celebrates the diversity of our community, and is committed to ensuring our learning and working environment is safe and welcoming.

JCU is proud to be part of the Respect. Now. Always. campaign – a national initiative led by Universities Australia to highlight our determination to ensure our students and staff are safe from discrimination and sexual harassment. Further information about the campaign and free services available for students can be found at [jcu.edu.au/sew](https://jcu.edu.au/sew)



### Our commitment to Australian Aboriginal and Torres Strait Islander peoples

James Cook University is committed to building strong and mutually beneficial partnerships that work towards closing the employment, health and education gap for Australian Aboriginal and Torres Strait Islander peoples.

Our students come from many backgrounds, promoting a rich cultural and experiential diversity on campus.

*We acknowledge the Aboriginal and Torres Strait Islander peoples as the Traditional Custodians of the Australian lands and waters where our staff and students live, learn and work. We honour the unique cultural and spiritual relationship to the land, waters and seas of First Australian peoples and their continuing and rich contribution to James Cook University (JCU) and Australian society. We also pay respect to ancestors and Elders past, present and future. Aboriginal and Torres Strait Islander peoples are advised that this publication may contain names or images of people who have passed away.*



Kassandra Savage (JCU Alumni),  
'Coming Together and Respecting Difference',  
acrylic on canvas, 2014, 90cm x 90cm.

<sup>1</sup> 2022 Times Higher Education (THE) Impact Rankings. <sup>2</sup> 2022 Global Ranking of Academic Subjects. <sup>3</sup> 2022 QS World University Rankings by subject. <sup>4</sup> 2023 Good Universities Guide.



# JCU Brisbane

With a picturesque river precinct and an array of cultural and entertainment options, Brisbane is regarded as one of the most liveable cities in the world. JCU Brisbane students receive a world-class education in Australia's fastest growing capital city for employment.



The Goodwill Bridge, a pedestrian and cycle bridge that spans the Brisbane River, connects the South Bank Parklands to the city centre.

## JCU Brisbane

Conveniently located in a modern high-rise building in the heart of Brisbane's CBD, at JCU Brisbane you can explore a wide range of courses and find a study area that suits you.

The campus features interactive learning spaces, comfortable student lounges and a resource centre where you can network with university staff and fellow students from over 88 countries.

You'll have access to dedicated support services including opportunities for enhanced job-support, academic learning advisors, counselling, employment assistance, and English language and academic pathways.

There are also many clubs and societies you can join at JCU Brisbane, including sporting, recreational, academic and social groups. They're a great way to meet new people, learn new skills and have fun while studying.



## Brisbane fast facts

Brisbane is the capital of Queensland and the third largest city in Australia.

One of the more affordable cities in Australia, Brisbane is known for being safe and friendly.



### Climate

Summer (December–February)

21°–30°C/69°–85°F

Warm with rainy periods

Winter (June–August)

11–21°C/51.6°–69.8°F

Dry and mild

### Food

Easy access to an abundance of fresh local foods and cuisines from around the world.

### Population

1,199,384 (city), 496 (JCU)

### Transport

Bus services are available from Queen Street. Central Train Station is a 7-minute walk, and is 1 km to the riverfront.

### Places of worship

A prayer room is available on campus for student use.

### Medical

There are hospitals, medical clinics, psychology clinics and more off campus.

### Campus

JCU Brisbane is located in Brisbane's CBD.



# JCU Cairns

Study in some of the most interesting places on Earth. Explore unrivalled research locations and access World Heritage listed natural environments. Learn in modern facilities at Nguma-bada campus, Smithfield and Bada-jali campus, City. Build valuable professional networks while developing the skills and knowledge to make a difference.

JCU Cairns, Nguma-bada campus, Smithfield is surrounded by rainforest-covered mountains and is close to the northern beaches.

## JCU Cairns

Students at JCU Cairns are immersed in a dynamic learning environment with opportunities available for study, work, and play. With academic staff committed to student support and success, and a careers team ready to assist both during study and after graduation, students at JCU Cairns have a world of experiences available to them. In addition, there is a large number of academic and sporting clubs on offer.

JCU Cairns, Nguma-bada campus, Smithfield is conveniently located just north of the city centre. Uniquely juxtaposed between urban settings and natural wonders, the campus is surrounded on three sides by rainforest-covered mountains and is close to the northern beaches. Students enjoy a tranquil learning environment due to the abundance of lush greenery and spacious areas.

Want to study in the heart of Cairns? Located in Cairns CBD, JCU Cairns, Bada-jali campus, City offers a range of flexible study, teaching, and meeting areas. It features North Queensland's first 'moot court' with e-court facilities providing practical training for law students. Access to videoconferencing and catering facilities in the boardroom gives staff and students opportunities to meet and network with businesses and the local community.

Studying in Cairns provides access to two World Heritage listed natural environments – the Great Barrier Reef Marine Park and the Wet Tropics ancient rainforests. Students can develop specialised skills during field trips and expeditions to distinctive research locations.

The variety of natural wonders coupled with a tropical climate make Cairns an ideal place for active outdoor living. The city is a great base for exploring the nearby resort regions of Port Douglas and Mission Beach, the picturesque Atherton Tablelands, and outback Queensland.



Cairns city, overlooking Trinity Bay.

## Cairns fast facts

Cairns is a gateway to the Great Barrier Reef, the Wet Tropics rainforests in the Daintree National Park, the Atherton Tablelands, and the Gulf Savannah region, so you'll never run out of places to enjoy and explore.



### Climate

Wet season (November–May)  
24°–32°C/75°–90°F  
Hot, rainy and humid  
Dry season (June–October)  
17°–26°C/63°–79°F  
Mild and dry

### Food

Easy access to an abundance of fresh local food and cuisines from around the world.

### Population

240,190 (city), 3,147 (JCU)

### Transport

Bus to and from campus, car, bicycle (extensive network of bike tracks throughout Cairns), international airport.

### Places of worship

JCU's Multifaith Chaplaincy Centre is available as a free facility for you to practise your faith.

### Medical

On-campus dental clinic, as well as a hospital, medical clinics, psychology clinics, and more off campus.

### Campus

JCU Cairns, Nguma-bada campus, Smithfield, near the popular northern beaches and approximately a 20-minute drive from the city centre. Study facilities can also be accessed at the JCU Cairns, Bada-jali campus, City.

### On-campus sport

Gymnasium, basketball courts, sporting fields, and a world-class mountain bike track.

Sources: ABS 2016 (SA4 areas) (latest available);  
2021 JCU numbers as per COGNOS 24/03/2022

Please note: Information is subject to change | 9



# JCU Singapore

A constantly evolving city, Singapore is at the forefront of global health, technology, and economic advancement. JCU Singapore features modern facilities, collaborative learning spaces, and internationally renowned lecturers.

[jcu.edu.sg](http://jcu.edu.sg)

## JCU Singapore

JCU Singapore was established in 2003, bringing programs direct from Australia and resident senior academic staff from JCU to ensure academic quality. JCU Singapore has achieved the highest level of accreditation from the Singapore Government, the EduTrust Star.

JCU Singapore offers a wide range of courses including business, education, environmental science, game design, hospitality and tourism management, and healthcare sciences.

Students have opportunities to study in Australia with the Inter-campus Mobility Program, as well as overseas with the Study Abroad Program.

Singapore is a distinctive, thriving place. With a total land area of just 646 square kilometres, it is a compact city-state brimming with the vibrancy of over 5 million people. As the largest port in Southeast Asia, Singapore is one of the busiest ports in the world and the city-state excels in trade and tourism. You will find a diverse population of Chinese, Malay, Indian, and other ethnic groups, covering a wide spectrum of religions, cultures, and languages. The synergistic mix of ethnic groups offers international students and visitors a wide range of choices for living, working, studying, and discovering in Singapore.

## Singapore fast facts

As an ever-evolving city, Singapore is at the forefront of global health, technology and economic advancement.



### Climate

Dry season (March–August)

25°–32°C/77°–90°F

Wet season (September–February)

24°–32°C/75°–90°F

### Food

There is easy access to fresh fruit, vegetables, meat, and seafood. Singapore enjoys a large range of ethnic cuisines, as well as plenty of vegetarian, vegan, and halal options.

### Population

5.45 million (city), 4,066 (JCU)

### Transport

Two MRT (train) stations are a 10-minute walk from campus, and there are three bus stops within short walking distance to the campus.

### Places of worship

A prayer room is available for students to use.

### Medical

On-campus facilities include the JCU Singapore Psychology Clinic. There is a hospital 15 minutes from the campus, as well as several medical clinics around the city.

### Sporting facilities

A wide range of sporting facilities are on campus, including a gymnasium, basketball and tennis courts, and a multi-purpose sports hall.

Sources: Department of Statistics Singapore 24/03/2022; 2021 JCU numbers as per COGNOS 24/03/2022

Please note: Information is subject to change | 11





# JCU Townsville

Study in a unique environment where world-class facilities, natural wonders, and vibrant student life come together. JCU Townsville is a teaching, research, and community hub with a range of state-of-the-art equipment and resources for you to make the most of your time at university across two campuses: Bebegu Yumba campus, Douglas and the City campus.

## JCU Townsville

Students access exceptional teaching and research facilities at JCU Townsville. Develop professional skills, engage with peers, and learn from leading lecturers at JCU Science Place. The world-class facility features sophisticated teaching areas, collaborative lecture theatres, technology-enabled active learning spaces, and fully equipped research labs. Students can also access research facilities and learning support services at the Eddie Koiki Mabo Library. The library hosts exhibitions, providing opportunities to access and appreciate different artworks and artefacts. Students enjoy a rich social life and can join a range of clubs and societies. From sports through to culture, there is a club to suit any interest.

JCU Townsville, Bebegu Yumba campus, Douglas is surrounded by natural bush and parkland. The campus houses around 1,400 students in colleges and halls of residence.

Immerse yourself in the heart of Townsville at the JCU Townsville, City campus. Located in Townsville's CBD and boasting a range of innovative spaces and state-of-the-art facilities, the City campus delivers services for the university, students, businesses, and community organisations.

Townsville is small enough to escape the hustle and bustle of big city life, but large enough to boast a range of facilities. Students can make the most of the great outdoors through rainforest hikes, mountain biking, and snorkelling or scuba diving on the Great Barrier Reef.

## Townsville fast facts

Townsville is Australia's largest tropical city and a thriving coastal port. Magnetic Island and the Great Barrier Reef are on Townsville's doorstep. The Gulf Savannah region and outback country towns lie to the west. Townsville is famous for an average of 320 days of sunshine per year, so there are endless opportunities to enjoy the outdoors.



### Climate

Summer (December–February)  
24°–32°C/75°–90°F  
Hot and humid  
Winter (June–August)  
13°–26°C/56°–79°F  
Mild and dry

### Food

Easy access to an abundance of fresh local foods and cuisines from around the world.

### Population

229,031 (city), 11,726 (JCU)

### Transport

Bus to and from campus, car, bicycle, international airport.

### Places of worship

JCU's Multifaith Chaplaincy Centre is available as a free facility for you to practise your faith.

### Medical

On-campus hospital, medical clinic, psychology clinic, physiotherapy clinic, dental clinic, occupational therapy clinic, speech pathology clinic, exercise physiology clinic, and veterinary clinic.

### Banks

Westpac, Commonwealth Bank, and RediATM facilities on campus.

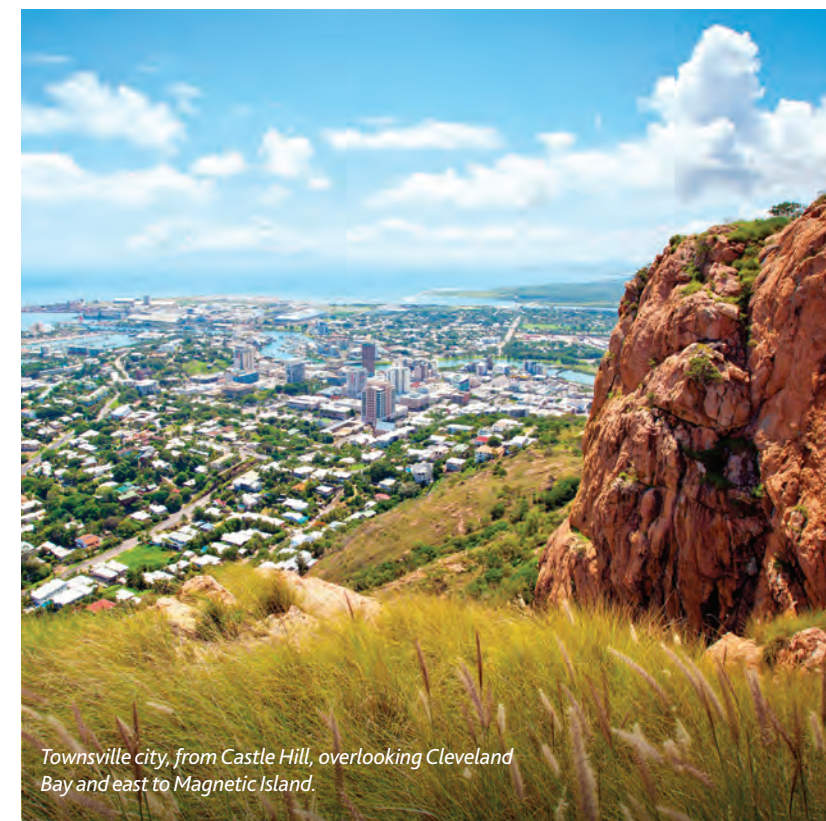
### Campus

JCU Townsville, Bebegu Yumba campus, Douglas, is Australia's largest university campus, approximately a 20-minute drive from the city centre. Study facilities can also be accessed at the Townsville City campus.

### On-campus sport

Gymnasium, basketball courts, tennis courts, squash courts, netball courts, rugby and soccer fields, hockey fields and cricket pitches.

Sources: ABS 2016 (SA4 areas) (latest available); 2021 JCU numbers as per COGNOS 24/03/2022



Townsville city, from Castle Hill, overlooking Cleveland Bay and east to Magnetic Island.



# Study centre network

*Our university campuses are supported by a network of study centres, clinical schools and field stations. This geographical spread helps us further our commitment to help regional and remote communities gain access to high quality education.*

## JCU Mackay

JCU Mackay has two campuses – one at the JCU Mater Clinical Training Centre in the Mater Hospital and another at the JCU Mackay Clinical School, within the Mackay Education Research Centre of Mackay Base Hospital.

These campus locations provide students with opportunities for hands-on learning and clinical experience in nursing and pharmacy.

Mackay is a vibrant tropical city with a population of 125,000, situated approximately 1,000 kilometres north of Brisbane. With thriving industries in tourism, agriculture and mining, it is one of Queensland’s most accessible regional destinations.

## JCU Mount Isa

JCU’s Centre for Rural and Remote Health at the Mount Isa, Murtupuni campus provides access to health education for the remote west region of Queensland. In the Kalkadoon language, murtupuni means ‘come together, gather together’.

Students can study a Bachelor of Nursing Science based in Mount Isa, or complete a clinical placement in the region as part of other health studies. The centre facilitates research and education for rural, remote and Indigenous health issues and provides students with unique rural experiences. Students can learn in lectures delivered by experts from all over Queensland, and connect with experienced local health professionals in tutorials.



## JCU Thursday Island

JCU is committed to research that improves the health of people and communities in the Tropics worldwide.

The Australian Institute of Tropical Health and Medicine at the Thursday Island, Ngulaigau Mudh campus is one place that makes this commitment possible. Ngulaigau mudh means ‘house of knowledge’ in the dialect of the Kala Lagaw Ya, a traditional language of the Torres Strait.

The facility provides both learning and research facilities for JCU students, and a community space for engagement and collaboration with the Torres Strait community.

## JCU Rockhampton

JCU Rockhampton is located in a modern building in the heart of the city. Postgraduate students can access the facilities as part of JCU’s GP Training Program.

The JCU GP Training Program provides clinicians the opportunity to expand their scope of practice through working in private clinics and hospitals where they’ll gain experience treating a range of conditions in low-resource settings.

# Information for parents and partners

## The first weeks at Uni

The first weeks are exciting and busy. There is so much for new students to do, see, learn, and remember.

University will be a very different environment for those coming from a school or workplace background. Tertiary students are adult learners and are expected to manage their study responsibilities accordingly.

## Typical university week

The key to succeeding at Uni is time management. Students can get the most out their degree by allocating a minimum of 10-12 hours per week for each subject. They can maximise the 25 per cent of their time spent in face-to-face classes by using the other 75 per cent on independent study to prepare them for their lectures and tutorials.

This self-directed study will include academic reading, reviewing notes, completing tutorial exercises, group study, as well as assignment and exam preparation. A weekly planner as well as a study period planner are great tools that students can use to stay on top of their study. Students can download templates for these from The Learning Centre. [jcu.edu.au/learning-centre](https://jcu.edu.au/learning-centre)

## Top tips to help your child

### PLAN FOR SUCCESS

Encourage your child to attend all classes and create a weekly and semester study plan to reduce stress and stay on track. Remind them to ask questions, especially in the first few weeks.



*“O Week really helped me get started and gave me a great insight into my course and what to expect at university. Some of the things I learnt during my first year at JCU were how important it is to attend all my lectures and tutorials, utilise all the free resources available like the Peer Assisted Study Sessions, remember to have a break sometimes, and ask for help when needed.”*

### Ethan Moody Humphrey

BACHELOR OF ENGINEERING HONOURS

## ORGANISE A STUDY SPOT

Create a space where your child can leave textbooks open and notes arranged, without having to pack up whenever they finish studying. A quiet place with good lighting and a comfortable chair is ideal.

Encourage them to use the JCU Library, which is open seven days a week during teaching periods and offers inviting learning and social spaces.

## BE FLEXIBLE WITH FAMILY COMMITMENTS

There are times in the academic calendar when students really need to focus on their studies and forego some other activities.

You can support them by trying to arrange holidays and celebrations to coincide with ‘quiet’ times in the academic year, such as between teaching periods. Expect your child to devote more time to their studies when assignments are due and during the exam period.

## MAKE USE OF JCU'S SUPPORT SERVICES

JCU has a range of services available to support student success and wellbeing. Academic support, wellbeing and counselling, AccessAbility, careers and employment, and mentoring services are all available at no cost. If you or your child have concerns, seek information or advice from a relevant student support service, or visit [jcu.edu.au/support](https://jcu.edu.au/support)

## ENCOURAGE THEM TO PARTICIPATE IN UNI ACTIVITIES

Meeting new people — students, academics, and other JCU staff — will help your child develop valuable support networks and a sense of belonging. These contacts can be helpful when challenges arise, as well as for work experience and professional opportunities. View information about student clubs and other activities at [jcu.edu.au/student-life](https://jcu.edu.au/student-life)

## PREPARE YOUNG ADULTS FOR LIVING AWAY FROM HOME

Check that they have a Medicare card, a Tax File Number, Health Care card, personal bank account, and relevant phone apps for maps and public transport. A driver’s license and a certified copy of their birth certificate are also useful as extra ID.

*“I work in tertiary education so I knew that the first year at university would be full of challenges for Ethan. Between study, part-time work, family commitments, and social life, university really is a big adjustment. From a parent’s point-of-view, I would recommend taking an interest in what’s happening and offer as much support as possible - but also remember that this is a new and exciting experience for our kids and we should encourage them to take advantage of it”*

### Lisa Moody

PARENT



# From Year 12 to university – guaranteed

There are now even more ways to secure your place at JCU.

*At JCU, we'll do everything we can to give you the confidence and certainty you need to leap into university. We're committed to helping you recognise your skills, passions and experience, and make the right decisions for your future. Whatever you want your future to be, JCU can help you get there.*

## Early offer

If you're a Year 12 student, you have the opportunity to receive an early offer for a course based upon a recommendation from your school. You may be still required to meet all of the relevant entry requirements and subject prerequisites for the course. You'll also need to make sure you've listed JCU as your first preference in QTAC.

### HOW DOES IT WORK?

Talk to your school Guidance Officer/Careers Adviser about wanting to study at JCU next year, and that you'd like to be considered for the Early Offer Program. They can assist you with the application to provide to your Principal for consideration.

To find out more, including the full list of courses included in the Early Offer Program, visit [jcu.edu.au/year-12/early-offer](https://jcu.edu.au/year-12/early-offer)

## Guaranteed Admissions Plan

Are you doing well at school, but worried you don't have the right prerequisites?

If you receive an ATAR of 90 and above, you are guaranteed entry into most JCU courses with all subject prerequisites waived.

An ATAR of 73 and above will guarantee you entry into most JCU courses, though you must meet the course subject prerequisites.

The Guaranteed Admissions Plan is open to all domestic and international applicants completing Year 12.

To find out more, including the full list of courses included in the Guaranteed Admissions Plan, visit [jcu.edu.au/year-12/guaranteed-admission](https://jcu.edu.au/year-12/guaranteed-admission)

## Adjustment factors

If you live in a particular area and/or are studying certain subjects, you may be able to have your ATAR adjusted.

For details about adjustment factors, please visit [jcu.edu.au/year-12/adjustment-factors](https://jcu.edu.au/year-12/adjustment-factors)

### REGIONAL PREFERENCE SCHEME

If you live in regional and remote areas of Queensland, you may be eligible to gain entry into JCU through an automatic adjustment of your ATAR by two bonus points. The Regional Preference Scheme is open to domestic applicants who live in regional and remote Queensland (postcodes 4306 through to 4895). The scheme can't be used for entry to postgraduate degrees, graduate entry programs, and courses with special application requirements.

The bonus points are automatically applied by QTAC at the time you are assessed. This means you don't need to apply for this scheme; we do it for you.

### SUBJECT ADJUSTMENT SCHEME

This scheme allows for an automatic adjustment for subjects requiring a high level of skill and knowledge that are successfully completed in high school.

The Subject Adjustment Scheme is open to all domestic and international applicants completing Year 12, and can't be used for entry to postgraduate degrees, graduate entry programs, and courses with special application requirements.

Adjustments are cumulative up to a maximum of ten (10) rankings and some exceptions apply.

The bonus points are automatically applied by QTAC at the time you are assessed. This means you don't need to apply for this scheme.

For details on which subjects are part of the scheme, visit [jcu.edu.au/year-12/adjustment-factors](https://jcu.edu.au/year-12/adjustment-factors)

## Special consideration for adverse circumstances

JCU participates in QTAC's Educational Access Scheme (EAS), which recognises applicants who have been educationally disadvantaged due to: financial hardship, home environment and responsibilities, English language difficulty, personal illness and disability, or educational disruption.

This scheme is open to domestic applicants who apply through QTAC, but does not apply to courses with special application requirements.

You can apply for this scheme through QTAC.



# JCU campus life

Experience the best of student life, including a vibrant social community. Join clubs and societies, meet like-minded people, and make lifelong friends. Pursue your interests or try something new – you never know where campus life will take you.

[jcu.edu.au/student-life](http://jcu.edu.au/student-life)

## Orientation Week

Kick start university life with Orientation Week (O Week). Familiarise yourself with the campus, meet other students, get to know your lecturers and tutors, and attend information sessions. The JCU Orientation Program runs over six weeks, from the week before O Week until Week 4. Get pumped and ready for the year ahead!

[jcu.edu.au/getready4uni](http://jcu.edu.au/getready4uni)

## Student Association

The JCU Student Association (JCUSA) is your first stop for getting involved with student life. Become a JCUSA member to have fun, meet a variety of people, and be invited to social events throughout the year. You'll find a community to connect with by joining one of our many clubs and societies, from social and academic societies to sports, cultural, and religious clubs. JCUSA is also here to care for you during your time at university, with support and free independent advice available for all students.

[jcusa.edu.au](http://jcusa.edu.au)

## TropEco: Sustainability in Action

Passionate about sustainability and the environment? Make a difference with TropEco! Collaborate with like-minded people to help create a culture of sustainability at JCU. Volunteer in a range of activities, from running campaigns to maintaining on-site community gardens. You can also apply to intern at TropEco and gain valuable skills and work experience.

[jcu.edu.au/tropeco](http://jcu.edu.au/tropeco)

## Learn from the best

Want to gain an edge in your first study period? Get a student mentor! The JCU Student Mentor Program helps to match experienced student mentors with new undergraduate students from the same course of study during O Week. Student mentors are passionate about sharing their knowledge and helping students succeed in their first study period.

[jcu.edu.au/mentor](http://jcu.edu.au/mentor)

## The Learning Centre

The JCU Learning Centre offers free and confidential academic learning support, from self-help resources to one-on-one consultations with qualified learning advisors and experienced senior students. Get the learning help you need online or on-campus, with numeracy and statistics, academic reading and writing, study and assessment planning, and English language skills for university level study. The Centre also hosts peer-assisted study sessions, where students can work together to better understand the content and learning objectives for a subject.

[jcu.edu.au/learning-centre](http://jcu.edu.au/learning-centre)

## Library services

Study smarter, not harder. The JCU Library offers a range of resources and services to help you succeed. You'll have 24/7 access to a comprehensive range of online resources to assist you with research, referencing, and basic library enquiries. On campus, try out our comfortable zoned study and social areas which include bookable study spaces for groups and individuals, Wi-Fi, computers, printers and 3D printing.

[jcu.edu.au/library](http://jcu.edu.au/library)



## Your health and wellbeing

Discover how JCU can help you outside of the classroom. Put your mind, body, and soul first with our free and confidential wellbeing services. Counselling and wellbeing staff are here to support you through social, emotional, welfare, and personal issues. AccessAbility services are available if you have a temporary or permanent injury, illness, or health condition that will impact on your study. JCU also has a multi-faith chaplaincy that offers a diverse range of services to the community.

[jcu.edu.au/sew](http://jcu.edu.au/sew)

## Careers and Employability

Need a part-time job while you study? JCU's Careers and Employability service is available online and on campus, connecting students to part-time and casual employment, vacation jobs, and volunteering opportunities. You can also find career advice and planning, resume tips, and links to potential employers.

[jcu.edu.au/careers](http://jcu.edu.au/careers)

## Financial support

From payment deferrals to scholarships, JCU has a range of financial support options to help you with the costs of studying.

[jcu.edu.au/financial-support](http://jcu.edu.au/financial-support)

## Childcare

Unicare Centre and Unicampus Kids are non-profit, community-based long day care centres located on-campus at JCU Townsville.

[jcu.edu.au/unicare](http://jcu.edu.au/unicare)



# JCU Accommodation

Whether you need somewhere to stay for a block-mode subject or for the duration of your course, there is a range of options available at JCU.

## Living on campus

Living on campus is a great way to make the most of your time at JCU. There are five different accommodation options at JCU Townsville, Bebegu Yumba campus, Douglas, including the brand new 403-bed Burralga Yumba residence. There are two options in Cairns, including the 300-bed John Grey Hall residence at JCU Cairns, Nguma-bada campus, Smithfield.

All rooms at our on-campus residences are single board, with a bed, study desk, chair, fan, air-conditioning and WiFi. Each residence is different in regards to style of living, culture and atmosphere. There are options for fully-catered or self-catered housing. You can take virtual tours of each residence at [jcu.edu.au/accommodation](https://jcu.edu.au/accommodation)

Living on-campus is so much more than just a room. It is a safe, secure and fun way to transition into university life. Each of our residences provides academic, wellbeing and social support.

Your safety and security are a priority. Each bedroom has an individual lock that only you and our staff can access. After-hours access to any buildings on residence can only be accessed by residents living there. We have CCTV cameras throughout the buildings. JCU Security are on campus and patrol the grounds 24/7, and are able to escort you back to your residence if you are studying late at night.

Relocating to attend university is a big thing. Our on-campus team are here to support you through your transition to university life. They are there to talk to you when you need support, check on you to ensure that you are coping OK, and make sure that your health and wellbeing are on track for you to achieve your academic goals. To assist with your studies, you can form study groups and our team are able to provide academic support.

One of the most important things when you are moving somewhere new is making new friends to share your experiences with. Isolation and loneliness can have a significant impact on your mental health and academic success. During your first week on campus you will complete an orientation process. This is your opportunity to meet new people, and to learn about on-campus facilities, support resources and local amenities such as public transport, shops and medical services. There are lots of fun social activities happening all year round including movie nights, sporting events, international festivals, outings and musical showcases.

Applications to live on campus are now open. You can apply for on-campus housing at [jcu.edu.au/accommodation](https://jcu.edu.au/accommodation)



## Living off campus

Off-campus housing can come in the form of sharing a house with other students, purpose-built student accommodation or renting an entire property.

Before committing to a property or room off-campus, please be sure to:

- Check what you are getting is part of your lease. Even though images show the property with furniture, they may have been put there for marketing purposes only.
- Check the dates and length of time you are committing to. You will be signing a legal document, which you may not be able to break because you have changed your mind.
- Check the location of the property to the proximity to the University campus, bus stops and amenities.

You can contact the JCU Accommodation team for any support, or to answer any questions you have in relation to the property or location you are considering living in during your time at JCU.



The new Burralga Yumba residence on-campus at JCU Townsville  
Scan the QR code for a flythrough of the new facility

## Homestay

A homestay is when you are matched with a family in the local area to live with. All homestay hosts have been screened by JCU's homestay provider, and are required to undergo training in order to provide a high level of service and comfort to the student. More information is available at [jcu.edu.au/homestay](https://jcu.edu.au/homestay)

## Transport

Both JCU Townsville and JCU Cairns are located about 20 minutes from the airport. Buses don't run from the airports, however taxis and rideshare companies are available. A bus from the centre of town to each University campus will take about 30 minutes. Buses run regularly. You can view the timetables at [sunbus.com.au](https://sunbus.com.au)

## Further information

[jcu.edu.au/accommodation](https://jcu.edu.au/accommodation)  
accommodation@jcu.edu.au  
T 07 4781 4148  
T (International) +61 7 4781 4148



*“Living at Saints has been a highlight of my JCU experience so far! I’ve formed connections and made friends with many like-minded students through social activities and mealtimes. I love the convenience of having only a short walk to the university and all the facilities available on campus.”*

## Josephine Oehler

STUDYING BACHELOR OF MEDICINE, BACHELOR OF SURGERY





# Indigenous studies and support

*The Indigenous Education and Research Centre is the hub of Indigenous education, research and engagement at JCU, through successful and sustainable programs and services.*

Specialist advisors at the Centre provide Indigenous students with personal and study support. This is available from the time you start thinking about studying right through to graduation and beyond.

The Centre encourages Australian Aboriginal and Torres Strait Islander high school students to consider university through programs that offer a taste of campus life and help students to prepare for tertiary study.

It also manages the range of Indigenous Studies subjects, which are available to all students through the Bachelor of Arts or as electives in any other course.

## High school student programs

### WINTER SCHOOL

JCU Winter School offers students in Years 10, 11 and 12 the chance to experience university life during the school holidays. Over five days, students live on campus and take part in academic lectures and team-building activities in an interactive program that provides opportunities to meet University staff and students and form bonds with other students in the program. All travel and accommodation costs are covered.

### SUMMER SCHOOL

This summer pre-program is for Aboriginal and Torres Strait Islanders who are looking to commence study at JCU. Its focus is to help you improve your study skills and knowledge with lectures and tutorials in maths, academic literacy and digital literacy. It also provides team-building activities to help you prepare for the demands of university study and to form connections with JCU staff and other students. All travel and accommodation costs are covered.

## Student support

The Centre is host to a strong team of teaching staff, student support advisors and researchers, offering support services in dedicated facilities on campus in Cairns and Townsville.

### SERVICES

The Indigenous Academic Support Advisors have an in-depth understanding of the challenges students can face during their higher education studies. They can help you develop study skills, create an effective study plan and improve your academic progress.

Student Support Advisors can offer you encouragement, advice and information on accommodation options, financial services, scholarships, accessing health and wellbeing services and staying focused on your goals.

Throughout your studies, your advisors will be there to help you develop as an independent learner, build strategies to meet academic demands and expectations, and stay motivated.

### FACILITIES

Designated common and meeting spaces are available for Aboriginal and Torres Strait Islander students to commune for study and peer support. The Centres are fully air-conditioned facilities with computers, a printer and photocopier.

The Centre provides tea, coffee and healthy snacks for students, along with the use of kitchen facilities including a microwave, toaster and fridge. These are secure and monitored spaces accessible 24 hours a day, 7 days a week to Indigenous students.

## Major in Indigenous Studies

Expand your understanding of the complex interface between Indigenous and Western knowledge, perspectives, and practices in Australia today.

JCU’s Bachelor of Arts includes an option to major in Indigenous Studies. It features eight subjects exploring Indigenous knowledge and traditions, colonial disruptions, and Indigenous re-assertion in the current era, from the local to the global. Some subjects include field trips to learn about the everyday realities, experiences and knowledges that shape and are shaped by Indigenous people, communities and ideas.

Read more about the Indigenous Studies major in the Bachelor of Arts in this guide, or visit [jcu.edu.au/bachelor-of-arts](http://jcu.edu.au/bachelor-of-arts)



*“University is not just for smart people, because I never finished school. It’s not just about being a smart person; it is about the ‘why’ you are doing this that is the main driver that will take you the rest of the way. I did this for myself, my family, and country.”*

**Philip Obah**  
BACHELOR OF ARTS-BACHELOR OF BUSINESS GRADUATE



# Investing in your future

## Admissions

JCU is committed to providing pathways and opportunities for all students, and creating a brighter future for life in the tropics.

As the leading higher education institution in North Queensland, JCU has a central role in education opportunities and research outcomes throughout the region. JCU graduates and their work shape future decisions for communities, and many students come from rural, regional, and remote areas.

JCU seeks to admit students from all parts of Queensland, as well as other states and countries, who aspire to create opportunities and enduring, sustainable benefits for our region and beyond. Academic achievement, creative endeavours, and commitment to community are important to our students. They are diverse, respect one another, and are eager to contribute as scholar-citizens.

### ADMISSIONS TRANSPARENCY

The Australian Government introduced a requirement for all higher education institutions to make data on their undergraduate admission cohorts available to the public each year starting from the 2018 admission period.

This information is intended to help potential undergraduate students understand the courses available to them, the typical student cohort each year, and specific admission requirements.

For more information, visit the online course pages.

Consult the JCU course-specific guide for specific admissions information about your degree, essential requirements for admission, admission criteria, how to apply, advanced standing, and a student profile.

For any questions relating to the information or data available, contact the Admissions team at [admissions@jcu.edu.au](mailto:admissions@jcu.edu.au)

## Fees

Study fees may seem confusing at first, but JCU is here to help. You can pay all or part of your fees upfront or, if you are eligible, you may defer payment of your course fees through the HELP scheme. The JCU Student Centre team can help you find out what financial support options are available, including the HECS-HELP and FEE-HELP loan schemes.

Each unit of study is classified into a student contribution band, depending on the study area of the unit (this may be different from the study area of your course). Annual tuition fees equate to 24 credit points. Tuition fees may increase each year. For the latest information, please visit [studyassist.gov.au](http://studyassist.gov.au)

Band	Study area	Per subject <sup>1</sup>	Maximum amount per year <sup>2</sup>
4	Law, accounting, economics, management, commerce, social studies, political science, justice, behavioural science (except PG clinical psychology and professional pathway psychology and social work), communications	\$1,892	\$15,142
3	Medical, dental, veterinary science	\$1,475	\$11,800
2	Allied health, other health, architecture, IT, creative arts, engineering, environmental studies, science, professional pathway psychology, professional pathway social work	\$1,037	\$8,301
1	Teaching, postgraduate clinical psychology, English, maths, nursing, languages, agriculture	\$515	\$4,124

<sup>1</sup> (3 credit points) <sup>2</sup> (24 credit points)  
For students who commenced on or after 1 January 2023.



### STUDENT SERVICES AND AMENITIES FEE (SSA FEE)

The Student Services and Amenities Fee (SSA Fee) improves services and facilities for students. Your fee statement and tax invoice can be found via your eStudent account, as well as the due date and how to pay.

You may be eligible to defer payment of your SSA Fee with a SA-HELP loan.

### INCIDENTAL FEES

You may need to purchase items or pay for activities relating to your course. These purchases are not covered by your tuition fees. Compulsory purchases can include software, accommodation for placement, travel, and technology such as a laptop. A benefit of studying at JCU is that living expenses in Cairns or Townsville are often more affordable than living in a capital city.

## Financial support

Don't let fees stand in the way of your future. Financial support options help with the cost of studying. You may be able to defer payments, get a loan, or receive government assistance.

### HECS-HELP LOAN

HECS-HELP is a Commonwealth Government loan program designed to defer payment of subject fees. You will have to repay your loan once you begin earning an income above the compulsory repayment threshold.

HECS-HELP is available to Australian citizens, permanent humanitarian visa holders, and some New Zealand citizens. Students must have a Commonwealth supported place (CSP) to be eligible.

### FEE-HELP LOAN

FEE-HELP is a government loan program similar to HECS-HELP. However, students do not have to have a CSP to be eligible for FEE-HELP. You must be an Australian citizen, a permanent humanitarian visa holder, or a New Zealand citizen who meets certain criteria.

Trained overseas professionals who want to undertake bridging study at JCU and have met specific eligibility criteria can also apply for FEE-HELP. You will have to repay your loan once you begin earning an income above the compulsory repayment threshold.

### OS-HELP LOAN

An OS-HELP loan is administered by the Australian Government to allow students to study part of their course overseas. Students may receive up to two OS-HELP loans, and may also receive a supplementary loan to study the language of their host country.

Students must have a CSP and meet the eligibility criteria. The loan amount will be added to your accumulated HELP debt.

## Scholarships and financial aid

### SCHOLARSHIPS AND GRANTS

You don't have to face your fees alone. Explore the range of financial support available to JCU students. Scholarships, bursaries, and grants are offered to assist financially, and we have a variety of options for students starting their first degree at JCU.

JCU offers many scholarships and grants. Government departments and industry groups also offer external scholarships. JCU administers the Commonwealth Scholarship Program for Australian Aboriginal and Torres Strait Islander students on behalf of the Australian Government. These scholarships support Indigenous students to have improved access to higher education. Find out more at [jcu.edu.au/scholarships](http://jcu.edu.au/scholarships)



# Pathways to JCU

There’s more than one way to achieve your study goals. With the support of JCU’s pathways options, you could be on your way to studying your chosen Bachelor degree faster than you thought.

All of them will help you develop the academic skills you’ll need for university level study.

The option you choose will depend on the gap between your current situation and the prerequisite subjects or ATAR you need for the course – that is, whether you need just a little help, or a bit more.

## Certificate of Higher Education

Missing one or two high school subjects shouldn’t mean you miss out on your desired career. The Certificate of Higher Education is a low-cost option to get your prerequisites sorted in time to start uni.

It’s ideal for students who:

- Recently finished Year 12
- Have the core literacy, numeracy and technology capabilities for university study
- Meet the ATAR score for their chosen degree, but are missing some prerequisite subjects

You’ll have the flexibility to study online and complete one subject at a time in short intensive block modes. If you only need one subject, you could be ready in just a few weeks.

Choose from:

- Bridging Science for Teachers
- Essential Maths
- Preparatory Mathematics
- Preparatory Chemistry

If you don’t have an ATAR score, take a different path to your chosen degree by first completing JCU Prep or the Tertiary Access Course, followed by the Diploma of Higher Education.

To apply or find out more about the Certificate of Higher Education, visit [jcu.edu.au/certificate-of-higher-education](https://jcu.edu.au/certificate-of-higher-education)

## Diploma of Higher Education

Gain a recognised, stand-alone university qualification while opening up a pathway to your chosen degree. The Diploma of Higher Education is a one-year course designed to help you if you want to study a degree but need to upskill first.

It’s ideal for students who:

- Have an ATAR score, but don’t meet the academic entry requirements of a their chosen degree
- Received a packaged offer through QTAC to successfully complete the Diploma of Higher Education before their Bachelor degree

This course includes a mix of introductory and first-year degree subjects, helping you develop practical study skills and build your knowledge with a tailored study plan to suit specific Bachelor degrees. Some of the subjects you successfully complete during the diploma may also count towards your degree.

You’ll be supported with an induction program to help you transition to university and advice and support from staff before and during the course.

### COURSE STRUCTURE

Two core subjects:

- Developing Academic Skills
- Learning in a Digital Environment

Choose a major based on your preferred study area:

- Business Studies
- Education
- Engineering and Applied Science
- General Studies
- Health
- Information Technology
- Psychological Science
- Science
- Social Work
- Society and Culture

Some study majors can be studied online and most are available on-campus in Cairns or Townsville.

You may qualify for entry to your chosen Bachelor degree after just six months, or finish the full year to achieve a stand-alone diploma qualification.

If you don’t have the required ATAR score or other prerequisites for entry, JCU Prep or the Tertiary Access Course could help you get the start you need to qualify.

To apply or find out more about the Diploma of Higher Education, visit [jcu.edu.au/diploma-of-higher-education](https://jcu.edu.au/diploma-of-higher-education)

## Tertiary Access Course

In just one semester you can get university ready with academic skills, confidence, and know-how. The Tertiary Access Course is designed to ease you in to university study with experienced and friendly staff to show you the ropes in small classes.

It’s ideal for students who:

- Left high school before completing Year 12
- Finished high school without receiving an ATAR
- Took a break from study after finishing high school
- Would like help to start studying at university level

Start your degree feeling cool and in control. Academic skills like literacy and numeracy can help you understand, analyse and communicate information. Essential IT skills can prepare you to focus on your study, not on computer problems.

You can choose to study full-time over 6 months, or study part-time for more flexibility. Successfully completing this course will qualify you for entry to the Diploma of Higher Education and some degree courses.

There are no subject fees involved with the Tertiary Access Course, however a Student Services and Amenities fee will apply.

To apply or find out more about the Tertiary Access Course, visit [jcu.edu.au/tertiary-access-course](https://jcu.edu.au/tertiary-access-course)

For information on fees, visit [jcu.edu.au/ssa-fee](https://jcu.edu.au/ssa-fee)

## JCU Prep

JCU Prep lets you build a solid foundation to start your university education and pursue your future career, regardless of your academic background or prior experience.

It’s ideal for students who:

- Left high school before completing Year 12
- Finished high school without receiving an ATAR
- Took a break from study after finishing high school
- Would like help to start studying at university level

You’ll be supported to learn effective study skills, plan and complete assessments, use digital technologies, read, write and use mathematics for university study.

JCU Prep is structured to prepare you for university through four weeks of intensive online study and experiential learning activities. Successfully completing this course will qualify you for entry to the Diploma of Higher Education.

There are no subject fees involved with JCU Prep, however a Student Services and Amenities fee will apply.

To apply or find out more about JCU Prep, visit [jcu.edu.au/jcu-prep](https://jcu.edu.au/jcu-prep)

For information on fees, visit [jcu.edu.au/ssa-fee](https://jcu.edu.au/ssa-fee)



*“Faced with an uncertain job market, I decided to upskill and expand my career options. The range of pathways options through JCU helped me figure out which course was right for me and get me on track to university study. My course gave me the skills, knowledge and confidence to study again and work towards my degree.”*

### Adam Train

DIPLOMA OF HIGHER EDUCATION GRADUATE  
BACHELOR OF ARTS - BACHELOR OF SCIENCE STUDENT



# Apply to study at JCU

Wherever you're at in your study or career – whether you're leaving school, looking to progress in your career, upskill, or change your path entirely – we've plenty of options for you.

## Choosing your course and applying

1.

### How to apply

Once you've decided which course you wish to study, you can start the application process.

Applications for courses commencing in 2023 open in August 2022. Most courses commence in February 2023, but many courses also commence at other times throughout the year.

#### For full information on courses and how to apply

[jcu.edu.au/apply](https://jcu.edu.au/apply)

Apply through Queensland Tertiary Admissions Centre (QTAC). You can choose up to six courses for your QTAC application, which you order according to your preference. Find out more about preferences at [qtac.edu.au/preferences](https://qtac.edu.au/preferences)

#### SPECIAL DEADLINES/APPLICATIONS

The JCU courses listed below require an additional online application that you must submit online directly to JCU.

- Bachelor of Dental Surgery
- Bachelor of Medicine, Bachelor of Surgery\*
- Bachelor of Veterinary Science

#### Application deadline: 30 September 2022

To access the JCU online application portal, please visit [jcu.edu.au/division-of-tropical-health-and-medicine/application-forms](https://jcu.edu.au/division-of-tropical-health-and-medicine/application-forms)

\*Shortlisted applicants are also required to attend an interview

2.

### Accept your offer

Once your application is assessed and approved, you'll receive an offer via email.

Offers are made periodically in line with QTAC offer rounds. You can check the status of your application at

[qtac.edu.au/applications](https://qtac.edu.au/applications)

#### ONCE YOU RECEIVE YOUR OFFER:

1. Log in to your application at [qtac.edu.au/applications](https://qtac.edu.au/applications)
2. Accept your offer
3. Click on 'Enrol at JCU Now' to activate your offer

3.

### Welcome to JCU

Once you have accepted your offer, you can finalise your enrolment at [jcu.edu.au/new-students](https://jcu.edu.au/new-students)

Explore the range of support services and learning resources, and to find helpful tips for your transition to uni, at [jcu.edu.au/getready4uni](https://jcu.edu.au/getready4uni)

JCU advisors can guide you through your new student experience.

To talk to a JCU advisor, call 1800 246 446

### Mature students

The term *mature students* includes anyone who finished school over a year ago. Whatever your academic qualifications, there are ways for you to study at JCU.

If you have the skills, maturity, and commitment needed for successful tertiary study, but do not have the formal academic qualifications, you can still pursue your goals at JCU.

Whether you want to boost your current career, or enter into a different industry, your work experience can be enough to get you on the path to a Bachelor degree.

[jcu.edu.au/pathways](https://jcu.edu.au/pathways)

You have the option to sit the Special Tertiary Admissions Test (STAT) via QTAC, which is an aptitude test and may show you are ready to step straight into a Bachelor degree. You can combine your STAT results with your previous employment experience in your application.

If you have existing qualifications or work experience, you may be able to apply for credit to fast-track your degree. Once you're accepted into your course, your application will be assessed for credit.

#### For more information

[jcu.edu.au/future-students/Mature-Students](https://jcu.edu.au/future-students/Mature-Students)



*"I had completely forgotten how to study. However, I got through because the people and resources at JCU are so good. I had a wonderful mentor who inspired me to become a mentor as it helped me adjust so well. I always thought that JCU believed in my capabilities before I knew what I was capable of achieving."*

**Laura Fewtrell**

**BACHELOR OF SPORT AND EXERCISE SCIENCE GRADUATE**



# Common university terms

University study includes terminology that you may not be familiar with at first. These are some of the more common terms you're likely to come across while exploring your study options.

You'll find these and many more terms on our website, in course handbooks and within JCU's policies, rules and regulations.

**ATAR** - The Australian Tertiary Admissions Rank, which provides a national comparative ranking of a student's academic performance in Year 12 relative to others graduating in the same year.

**ASSUMED KNOWLEDGE** - A minimum level of knowledge that you are assumed to have in a particular subject area prior to commencing.

**BACHELOR DEGREE** - An undergraduate academic qualification, typically requiring three to five years of full-time study or part-time equivalent.

**BACHELOR (HONOURS) DEGREE** - A Bachelor degree with a further full-time year of advanced studies offered to high-achieving students or included in a Bachelor (Honours) degree structure, providing a pathway into research and further study.

**COMMONWEALTH SUPPORTED PLACE** - A study place where your tuition fees are subsidised by the Australian Government. JCU offers Commonwealth Supported Places for eligible students on all undergraduate degrees.

**CREDIT FOR PREVIOUS STUDY** - Recognition of studies already completed at other tertiary institutions that can count as credit points towards your course at JCU. It may also be referred to as 'advanced standing' or 'recognition of prior learning'.

**CREDIT POINTS** - A basic measure of study load for each subject, with most subjects at JCU carrying a unit value of three credit points. A typical full-time study load for one academic year is 24 credit points (8 subjects), while part-time is generally no more than 75 percent of a full-time study load.

**DIPLOMA** - A sub-degree undergraduate academic qualification, typically requiring one to two years of full-time study or part-time equivalent.

**EARLY OFFERS** - A program to help you secure a place to study at JCU before you finish Year 12, based on your school's recommendation and assessment of your academic performance, motivation and capabilities. You would still need to complete Year 12 and meet entry requirements for your chosen course of study.

**GUARANTEED ADMISSIONS PLAN** - Students with an ATAR of 90 and above are guaranteed entry into particular JCU courses with all subject prerequisites waived. Those with an ATAR of 73 and above are guaranteed entry to these courses if all subject prerequisites are met.

**HANDBOOK** - Official and central source of information for all courses and subjects offered by JCU.

**INTAKE** - The time of year that you can start your degree, usually the start of a semester or trimester.

**MAJOR** - A primary area of specialisation within a Bachelor degree, including around eight related subjects in particular discipline.

**MINOR** - A sub-specialisation in a Bachelor degree, including around four related subjects in an area of study.

**OFFER ROUNDS** - The series of dates throughout the year when universities offer of study places to applicants, either directly or through a tertiary admission centre.

**ORIENTATION** - Often referred to as O Week, it is designed to welcome new students and provide information about your course, the campus and the range of services available.

**PREFERENCES** - You can select up to six undergraduate degrees you'd most like to apply and be accepted for. First and second on your list would be the degrees you'd most like to study, followed by other options you're interested in as third and fourth. Your choices for five and six would be courses you are willing to study as a back-up and are confident you'll receive an offer for. You'll only be eligible for an Early Offer on JCU courses you nominate as your first preference. You can add, delete, or change the order of your preferences online via your tertiary admission centre.

**PREREQUISITE** - A high school or university subject that you must complete before starting your degree or taking a higher-level university subject.

**PROFESSIONAL PLACEMENT** - Training and experience in a professional work environment that is part of your degree, designed to extend your knowledge and practical skills. It may also be referred to as 'work integrated learning'.

**QTAC** - The Queensland Tertiary Admissions Centre (QTAC) operates a centralised tertiary application service. It assesses applications against entry requirements provided by JCU and then makes offers to successful applicants during offer rounds.

**RECOMMENDED KNOWLEDGE** - While not essential, prior study in these areas may assist you to understand more about the topics in a course of study.

**SEMESTER** - A study period of around 13 weeks duration, with the academic year divided into two study periods.

**SPECIAL ENTRY REQUIREMENTS** - Some degrees require applicants to meet additional selection criteria or complete additional steps in the application process. This could be demonstrating prior study or industry experience, a supporting written application or a personal interview with JCU academic selectors.

**STUDY LOAD** - The number of subjects and associated credit points you take on per study period.

**STUDY PERIOD** - The period of time during which all aspects of subject delivery are scheduled, including reading and preparation, lectures, tutorials, practical sessions and assessment.

**SUBJECTS** - The building blocks of academic study, with each carrying a unit value in credit points that count towards a degree. Core subjects must be completed to meet course requirements, while elective subjects can be chosen from a broader range of options.

**TESTAMUR** - Your official graduation certificate confirming you have completed your degree.

**TRIMESTER** - A study period of around 10 weeks duration, with the academic year divided into three study periods.

**UNDERGRADUATE STUDY** - An academic program of study leading to a Diploma, Bachelor degree or Bachelor (Honours) degree.

# JCU Global Experience

## Study overseas

Want to get the most out of your degree? Make a lifetime of memories and earn your degree at the same time. The JCU Global Experience program helps students develop the knowledge, skills, and disposition to succeed in a global workforce. Open your mind to exotic locations, unique experiences, and extraordinary people. Complete a placement or short course, or spend an entire year abroad.

## Intercampus exchange

Enhance your JCU experience by attending JCU Singapore. Spend up to two semesters experiencing the diverse culture of this vibrant country while learning from the best at JCU Singapore. If you study a different discipline, you can use your electives to form a study plan.

## Outbound Exchange

Broaden your horizons, develop your language skills, and build your global network through JCU's Outbound Exchange program. JCU has partnered with more than 50 world-class universities across Europe, Asia, the South Pacific, and the Americas. Spend one or two semesters as an exchange student, and study subjects that can be credited towards your degree.

## Short study options

Prefer a short-term trip? Several of JCU's partner universities offer short programs or placements of 2-6 weeks that can be credited towards your JCU degree. Depending on what you study, you could complete a short course or placement in locations such as Ecuador, Germany, Japan, South Korea, or England. Short study opportunities are also available through various Australian organisations.

For more information on JCU's Global Experience programs, visit [jcu.edu.au/global-experience](http://jcu.edu.au/global-experience)

## Scholarships and loans

There are a range of scholarships and loans available for all Global Experience programs. The New Colombo Plan is an Australian Government initiative that provides opportunities for Australian undergraduate students to study, participate in internship and mentorship opportunities, and learn a new language in the Indo-Pacific region. You can apply for a scholarship, which can include a travel allowance, monthly stipend, and support for language training for both semester-based and short-study programs. There are also a range of other scholarships that you can apply for that are applicable to particular programs and institutions. In addition to a scholarship, you could be eligible to receive the OS-Help Loan to assist you with your overseas study expenses.

## Locations

Austria	Malaysia
Cambodia	Mexico
Canada	Netherlands
China	New Caledonia
Colombia	Norway
Denmark	Papua New Guinea
Ecuador	Samoa
England	Scotland
France	Singapore
French Polynesia	Slovenia
Germany	Solomon Islands
Hong Kong	Sri Lanka
India	Sweden
Italy	Taiwan
Indonesia	Thailand
Fiji	United States of America
Japan	Vanuatu
Laos	Vietnam



*“I wanted to experience life on the other side of the world. I even had the opportunity to volunteer in a lab whilst I was there. Being taught by world-renowned scientists and meeting a bunch of like-minded people made my exchange experience - I now have friends all over the world.”*

**Kathryn McKenna**

**BACHELOR OF SCIENCE – MARINE BIOLOGY**  
Exchange student at the University of Miami



# Find your study path

Take what you like learning and turn it into a career with a degree from JCU. Our handy guide lets you join the dots between what you’re interested in now, our huge range of study options and the career you’re aiming for.

Check the study area pages for more information JCU degrees, starting from page 34.

## Areas of study that I enjoy

**Arts, Social Sciences and Humanities**

- English
- Geography
- Global Studies
- History
- Languages
- Social Sciences
- Social and Community Studies
- Sociology

**Business and Economics**

- Accounting
- Business
- Economics
- Finance
- Hospitality
- Management
- Marketing
- Tourism

**Engineering and Information Technology**

- Computing
- Engineering
- Mechanics
- Information Technology

**Health and Physical Education**

- Biology
- Food and Nutrition
- Health
- Physical Education
- Sport and Recreation

**Law and Government**

- Economics
- Legal Studies
- History
- Philosophy and Reason

**Maths and Science**

- Chemistry
- Earth and Environmental Science
- Marine Science
- Mathematics
- Physics

## JCU Degrees

- B. Arts** (Majors: Anthropology, Archaeology, Design and Creative Arts, English, History, Human Geography, Human Services, Indigenous Studies, Sociology)
- B. Education** (Early Childhood Education)
- B. Education** (Primary)
- B. Education** (Secondary)
- B. Planning**
- B. Social Work**

- B. Business** (Majors: Business Intelligence and Information Systems, Hospitality and Tourism Management, Human Resources Management, International Business, Management, Marketing for the Digital Age, Sports and Event Management)
- B. Commerce** (Majors: Accounting, Banking and Finance, Economics, Financial Advising, Financial Management, International Trade)

- B. Engineering (Honours)** (Majors: Chemical Engineering, Civil Engineering, Electrical and Electronic Engineering, Electronic Systems and Internet of Things Engineering, Mechanical Engineering)
- B. Information Technology**

- B. Biomedical Science** (Majors: Molecular and Cell Biology, Microbiology and Immunology, Medicinal and Pharmaceutical Sciences, Physiology and Pharmacology)
- B. Dental Surgery**
- B. Medical Laboratory Science (Honours)**
- B. Medicine, B. Surgery**
- B. Midwifery**
- B. Nursing Science**
- B. Occupational Therapy**
- B. Pharmacy**
- B. Physiotherapy**
- B. Psychological Science**
- B. Speech Pathology**
- B. Sport and Exercise Science**

- B. Arts** (Majors: Criminology, Politics and International Relations)
- B. Commerce** (Majors: Economics, International Trade)
- B. Laws**

- B. Biomedical Science** (Majors: Molecular and Cell Biology, Microbiology and Immunology, Physiology and Pharmacology)
- B. Environmental Practice**
- B. Geology**
- B. Marine Science**
- B. Medicine, B. Surgery**
- B. Science, B. Advanced Science** (Majors: Aquaculture Science and Technology, Chemistry, Data Science, Earth Science, Marine Biology, Mathematics, Molecular and Cell Biology, Physics, Zoology and Ecology)
- B. Veterinary Science (Honours)**

## Possible careers

- Animator
- Anthropologist
- Archaeologist
- Author
- Artist
- Case worker
- Consultant
- Curator
- Designer
- Graphic designer
- Housing officer
- Historian
- Illustrator
- Interpreter
- Journalist
- Marketing coordinator
- Planning and development coordinator
- Policy advisor
- Social researcher
- Social worker
- Sociologist
- Surveyor
- Teacher
- Town planner
- Translator

- Actuary
- Asset manager
- Auditor
- Banking and finance executive
- Business analyst
- Business manager
- Data analyst
- Data researcher
- Economist
- Event planner
- Financial advisor
- Foreign Exchange trader
- Hospitality coordinator
- Human resources manager
- Investment analyst
- Public relations advisor
- Market analyst
- Marketing executive
- Risk manager
- Software engineer
- Sports promoter
- Venue coordinator

- Bridge designer
- Chemical engineer
- Civil engineer
- Consultant
- Data analyst
- Data security specialist
- Data scientist
- Electrical engineer
- Environmental engineer
- Food and beverage scientist
- Mechanical engineer
- Mechatronic engineer
- Petrochemical engineer
- Pharmaceutical product developer
- Plant supervisor
- Project manager
- Robotics designer
- Software designer
- Software developer
- Systems developer
- Wastewater treatment engineer

- Anaesthesiologist
- Dentist
- Exercise scientist
- Exercise physiologist
- General practitioner
- Immunologist
- Laboratory technician
- Medical consultant
- Medical researcher
- Microbiologist
- Midwife
- Molecular biologist
- Nurse
- Nursing manager
- Occupational therapist
- Orthodontist
- Pharmacist
- Physiotherapist
- Podiatrist
- Policy advisor
- Psychologist
- Psychiatrist
- Specialist
- Speech pathologist
- Speech therapist
- Sports scientist
- Surgeon
- Trainer

- Academic
- Administrative lawyer
- Communications officer
- Conveyancer
- Corporate lawyer
- Councillor
- Criminal lawyer
- Criminologist
- Diplomat
- Economist
- International trade executive
- Human rights lawyer
- Legal researcher
- Litigator
- Paralegal
- Policy advisor
- Political scientist
- Political staffer
- Politician
- Property lawyer
- Public servant

- Aquaculture researcher
- Chemical engineer
- Chemist
- Climatologist
- Data analyst
- Data scientist
- Earth scientist
- Ecologist
- Environmental scientist
- Freshwater farmer
- General practitioner
- Geologist
- Hatchery manager
- Hydrologist
- Marine biologist
- Marine farmer
- Marine scientist
- Mathematician
- Meteorologist
- Molecular biologist
- Physicist
- Soil analyst
- Statistician
- Surgeon
- Veterinarian
- Zoologist



# Arts and Social Sciences



JCU Humanities, Creative Arts and Social Sciences empower critical and creative thinking. Our graduates have strong analytical skills and a solution-based approach so they are ready today, for tomorrow.

## Five stars

for student teacher ratio  
Good Universities Guide 2023

## Transferrable skills

Expand employability opportunities through elevated thinking

## Think global

Develop a cross-cultural understanding of your field that enhances your expertise



“I would advise anyone thinking of studying a double degree in Arts and Science at JCU to absolutely go for it. Even if you only intend to build a career from one of your degrees, the skills you can learn, and experiences you can gain from your second degree will be highly transferable and will broaden your horizon and career options.”

Rhys Malcolm

BACHELOR OF ARTS - BACHELOR OF SCIENCE STUDENT

## Bachelor of Arts

Fees: \$14,000\* | ATAR: 59.4

### WHAT TO EXPECT

- Learn to think creatively, analyse effectively and build the cross-cultural communication skills necessary to work in today’s modern society. Develop your critical judgement to respond to social, cultural, and political issues and build a career with impact.
- Learn from world-class lecturers and experience small, friendly classes and personalised support. You may also have the opportunity to explore the world through overseas field trips.
- Choose from a variety of disciplines spanning creative arts, humanities and social sciences. You will study a selection of core subjects alongside your preferred discipline. You can choose a second discipline which can complement your studies, or broaden your area of expertise.
- JCU Arts graduates are recognised for reflective and analytical thinking, strong communication skills, and exceptional research abilities which are in high demand across many industries.
- You might be interested in combining your interest in Arts with skills in business, law or science by studying a joint degree, such as a Bachelor of Arts – Bachelor of Business, Bachelor of Arts – Bachelor of Laws, or Bachelor of Arts – Bachelor of Science.

### ★ CAREER OPPORTUNITIES

- |                                  |                     |
|----------------------------------|---------------------|
| • Writer                         | • Media broadcaster |
| • Journalist                     | • Graphic designer  |
| • Criminologist                  | • Photographer      |
| • International relations worker | • Historian         |
| • Anthropologist                 | • Archaeologist     |

### DISCIPLINES

#### Anthropology

Study history, languages, politics, economics, and social systems. Understand cultural and ethnic differences, and analyse how people’s beliefs fit into a wider social, political, and economic context. Learn the research, observation, and interview techniques that will equip you to work with people from diverse cultural backgrounds. Develop skills that are critical in decision-making for governments, corporations, and not-for-profit organisations.



#### Archaeology

Develop skills in archaeological site recording and conservation. Participate in field trips to investigate heritage site excavations and Aboriginal Australian rock art sites. You will learn the fundamentals of archaeology, then expand on this knowledge with more specialised offerings in Evolutionary, Forensic, Asian, Australian and European archaeology. You may also have the opportunity to travel on Southeast Asian excursions.



#### Criminology

Learn why people are motivated to commit crime, and explore strategies to prevent law-breaking and rehabilitate offenders. Throughout your studies, you can participate in a wide range of extracurricular criminology student activities. This course equips you with skills to help make a difference in your community. Not all subjects are available on campus, so some online study will be required.



#### Design and Creative Arts

Amplify your creativity, learn how to think differently, and bring your ideas to life. Using technical equipment, software and programs, you will explore the creative world and cultivate strong individual design aesthetics. Complement core subjects with one of two specialisations. Cairns students focus on the visual arts and digital imaging fields. Townsville students will study future-focused design and innovation.



#### English

Gain critical communication and reasoning skills and develop your understanding of the English language, while growing your interest in reading and writing. JCU English discipline students examine a wide range of literary periods and genres that provide a comprehensive source of historical and cultural understanding. Add to your knowledge of written and visual literature as you study the talents of Shakespeare, diverse forms of cinema, Australian literature, children’s literature and more.



#### History

Engage with the past to develop skills in critical thinking and communication. Gain an understanding of humanity by examining past societies and cultures. You will study the history of North Queensland, and develop your understanding of Australian history. Analyse major historical events in a global context and investigate how political, economic and environmental events shaped different communities.



#### Human Geography

Explore the interrelationship between people and their natural and built environments. Develop specialist skills including urban planning and design, regional sustainability, and social and environmental impact assessment. Become proficient in identifying problems, evaluating explanations, analysing data, and relevant computing techniques. Graduates understand how to develop recommendations to solve major social and environmental problems.



#### Human Services

Develop skills that will prepare you to work with marginalised and vulnerable people. Study social policy, community planning and development, education and capacity building, organisational practice, and social responsibility. Benefit from JCU’s research culture and working relationships with government agencies and local community groups. You will gain practical skills and experience through field trips and project work.



#### Indigenous Studies

Expand your understanding of the complex interface between Indigenous and Western knowledge, perspectives, and practices in Australia today. Explore Indigenous knowledge and traditions, colonial disruptions, and Indigenous re-assertion in the current era, from the local to the global. Some subjects include field trips, and one includes an optional international trip to an Indigenous community. Graduates are prepared to engage thoughtfully with Indigenous Australians and Indigenous issues in professional and community spaces.



#### Politics and International Relations

Take a deep dive into the people, institutions and issues involved in Australian and international politics. Explore political processes, policy, diplomacy, political economy, and globalisation of Australia and the Asia-Pacific. You will examine Australia’s global position and role, economic and social policies, traditional and non-traditional threats to security, poverty and other topics relevant to our modern society.



\* Estimated annual Commonwealth supported fee, plus Student Services and Amenities Fee. Fee deferral and scholarships available if eligible



# Arts and Social Sciences

JCU Humanities, Creative Arts and Social Sciences empower critical and creative thinking. Our graduates have strong analytical skills and a solution-based approach so they are ready today, for tomorrow.

## Five stars

for student teacher ratio  
Good Universities Guide 2023

## Transferrable skills

Expand employability opportunities through  
elevated thinking

## Think global

Develop a cross-cultural understanding of  
your field that enhances your expertise

### Psychology Studies

Gain a deeper understanding of the biological, social and cultural factors that influence how humans think, feel and behave. Explore the history of psychology, the nervous system, memory, cognition, intelligence, motivation, emotion, health psychology, personality and psychological disorders. Completing Psychology Studies does not lead to accreditation. If you want to become a Registered Psychologist, find out more about the Bachelor of Psychological Science (Honours).



### Sociology

Develop the analytical skills to learn how society is organised and how we interact with each other. Study social trends and understand why and how societies and institutions have developed through history. Gain social science research tools and explore a diverse range of topics. Examine the societal issues of the Tropics, including race, gender identity, poverty and wealth.



*“The Bachelor of Arts is the degree for the 21st century. For anyone who wants to prepare for the future, the Bachelor of Arts allows you to broaden yourself and develop understandings to deal with the challenging questions facing humanity. You can tailor your degree in line with your own interests. You have the flexibility to study a range of subjects.”*

**Rosita Henry**

PROMOTIONAL CHAIR, ANTHROPOLOGY LECTURER



*“Not only does the Bachelor of Arts have an inbuilt subject dedicated to teaching us how to transfer our skills from our degree to future work, but the things I learned along the way including communication, cross-cultural awareness, critical thinking, and research have proved a significant advantage in my career. I have yet to find a job in which the skills and knowledge I learned in my course haven’t been useful. The Bachelor of Arts gave me the ability to explore my interests and see where they could take me.”*

**Rebekah Lisciandro**

BACHELOR OF ARTS, SOCIOLOGY MAJOR GRADUATE

\* Estimated annual Commonwealth supported fee, plus Student Services and Amenities Fee. Fee deferral and scholarships available if eligible

**LEGEND**  JCU Cairns  JCU Townsville  JCU Mackay  JCU Mount Isa  JCU Singapore  JCU Brisbane  Study online  Start Semester 1  Start Semester 2  Trimester Intake  
 Course duration in years  Professional experience placements  Professional accreditation  Field trips



# Biomedical Sciences

JCU Biomedical Sciences is a leader in experiential learning. Develop skills with a world-class education in the genome, microbiome and metabiome – linked to the cell and health of a living organism. Highly valued by employers, our graduates are at the leading edge of health and the human body.

**Five stars**  
 for learner engagement and learning resources  
Good Universities Guide 2023, UG Health Services

**#2 in Australia**  
 for skills development and student support  
Good Universities Guide 2023, UG Health Services

**#1 in Queensland**  
 for full-time employment  
Good Universities Guide 2023, UG Health Services

## Bachelor of Biomedical Sciences

Fees: \$8,301\* | ATAR: 65.4

WHAT TO EXPECT

- Gain a thorough understanding of the relationship between science and medicine, with an emphasis on biomedical science in the tropics. Use your degree as the foundation to a career in laboratory research, as a pathway to other health professions, or continue to higher research studies.
- Study human biology, from molecular to whole-body systems, and understand how the body responds to disease. Choose from one of four specialised majors, and learn leading research techniques and skills from world-class medical professionals.
- Acquire practical work skills learning in modern laboratories, hospitals, and medical centres. JCU Biomedical Sciences graduates have the knowledge, skills, and competitive edge needed to succeed in their chosen fields.

★ CAREER OPPORTUNITIES

- Pathology assistant
- Cardiac physiologist
- Respiratory physiologist
- Sleep physiologist
- Renal physiologist
- Research assistant
- Laboratory technician

- IVF laboratory technician
- Sales and technical consultant in medical technology
- Regulatory affairs
- Workplace health and safety

MAJORS

**Microbiology and Immunology**  
 Gain the skills and knowledge in the theories of epidemiology, molecular genetics, cell biology and advanced immunobiology. Extend your knowledge by understanding and analysing the theories of infectious diseases and tropical microbes. Choose from specified elective subjects to further develop your interests. Graduates majoring in microbiology can apply for membership of the Australian Society of Microbiology.

**Molecular and Cell Biology**  
 Study and apply the theories of modelling natural systems, quantitative methods in science, molecular genetics and cell biology. Consolidate and extend your knowledge by studying the molecular basis of disease, bioengineering and bioinformatics. Choose from specified elective subjects to further develop your interests, including the option of completing an advanced research project.

**Physiology and Pharmacology**  
 Advance your understanding of the theories of epidemiology, molecular genetics, cell biology and pathobiology, and choose from specified elective subjects. Gain the knowledge and skills to understand and apply pathophysiology and therapeutics theory. In your third year, you will consolidate and extend your knowledge and skills by designing and completing a research project.

## Bachelor of Medical Laboratory Science (Honours)

Fees: \$8,301\* | ATAR: 65.40

WHAT TO EXPECT

- Be at the forefront of scientific progress in health and diagnostics with the Bachelor of Medical Laboratory Science (Honours). Become qualified to work anywhere in Australia; this degree is fully accredited by the Australian Institute of Medical and Clinical Scientists (AIMS).
- Understand the relationship between microbiological, haematological and chemical testing in the diagnosis of disease in clinical and health-care settings. Gain practical experience in public hospitals and private laboratories, and build professional networks which will help advance your career.
- Combine theoretical studies in fields including microbiology, histology, molecular biology, haematology and transfusion science, with essential skills in quality assurance and laboratory management.

★ CAREER OPPORTUNITIES

- Medical laboratory scientist in hospitals, private practice or research
- Biochemist
- Cytologist
- Haematologist



*“JCU was the obvious choice for my tertiary education, as it offered leading education in Biomedical Sciences, and is taught by real research scientists! Completing this course seamlessly led me to a postgraduate education under the same researchers who had taught and inspired me.”*

**Rhys Gillman**  
 BACHELOR OF BIOMEDICAL SCIENCES GRADUATE  
 MASTER OF PHILOSOPHY CANDIDATE



# Business and Commerce



JCU Business is a leader in building practical, professional skills and knowledge. A strong focus on professional development and multidisciplinary education enables our graduates to excel. Succeed in enterprise across a diverse range of commercial, government and civil society endeavours.

Skills development

Employability skills embedded in study

Industry experience

Develop professional skills during internships

Five stars

for student support

Good Universities Guide 2023, UG Business



“I loved the diversity of the Bachelor of Business, studying with people with different majors and interests. This flexibility means you get to try a bit of everything. Like many, I switched majors once or twice until I found one that really spoke to me.”

**Cameron Agius**  
BACHELOR OF BUSINESS, MAJORING IN HUMAN RESOURCES MANAGEMENT GRADUATE

## Bachelor of Business

Fees: \$13,205\* | ATAR: 59.4

- WHAT TO EXPECT
- Designed to equip you with the skills to start a successful career, this business course has a strong focus on real-world experiences. Be competitive in the workplace with a degree that gives you an understanding of all the elements required for managing sustainable business.
  - You will gain the skills to become an effective leader in business and learn how decisions you make contribute directly to an organisation's success. You will be empowered with knowledge of how to become a leader in business and understand the pillars of a sustainable business model.
  - In your first year, you will study core subjects relevant to all business majors. You can then tailor the degree to suit your interests by selecting your preferred major and strengthen this major with elective study in other focus areas.
  - You may also be interested in the Bachelor of Business–Bachelor of Laws, Bachelor of Business–Bachelor of Psychological Science, or Bachelor of Arts–Bachelor of Business.

- ★ CAREER OPPORTUNITIES
- Business intelligence analyst

• Social media strategist

• Events and tourism manager

• Behaviour change specialist

• Human resource manager

• Operations manager

• Brand and promotions specialist

• Project manager

• Digital marketing consultant

MAJORS

**Business Intelligence and Information Systems**

Learn how to integrate information technology systems and data into business strategies, and work with digital information systems to manage large amounts of data securely. Use your insight as a business intelligence analyst to create cost-effective systems and identify

business opportunities. Ensure your employability and maximise your opportunities in this rapidly growing industry. Graduates can apply for membership with the Australian Institute of Management (AIM).



**Hospitality and Tourism Management**

Stand out from the crowd with this major and manage tourism and hospitality attractions, events and services. Gain the professional expertise to manage, plan and market the food, recreation, accommodation and tourism industries. Study the logistics and operations of conference and event management. Your in-depth understanding of hospitality will allow you to create amazing travel and event experiences.



**Human Resources Management**

Discover what motivates employees and how you can boost performance and productivity in organisations. Learn how to effectively communicate, develop positive employment relations and create environments that help people thrive. Your skills and knowledge in for human resources can take you across industries in Australia and around the world.



**International Business**

Build specialised skills to manage and conduct business in a complex global environment. Your interest in developing strategies and planning for projects will see you involved in multi-national enterprises. With the skills to work in the exciting international arena, you can build a sustainable, competitive business position in the international marketplace.



**Management**

Use your love of innovation, entrepreneurship and people-management to strengthen your employability. Learn how to lead businesses in highly competitive environments, solve complex organisational problems, plan effectively and hire the right employees. Manage finances, resources and direct business operations with confidence in a fast-paced setting. You will learn a variety of transferable skills, important in managing a business or team in any industry.



**Marketing for the Digital Age**

Get the skills to speak directly to your customers through digital marketing, social media and traditional sales advertising. Your creativity and understanding of people will help you become an effective marketer, fulfilling the needs of your customers or growing a new customer base. Develop industry knowledge by creating sustainable marketing strategies for real-world businesses. You will learn how to build a target audience profile and create advertising that speaks to your customers. Marketing skills are fundamental for growing a business in the private, public, and non-profit sectors.



**Sports and Events Management**

Enter the dynamic, fast-paced environment of the sporting and events industries. Learn how to create and coordinate sports, business, and public events on both a small and large scale. Events are central to local, national and international economies and tourism; you will be highly-employable in an industry that is growing exponentially. Benefit from our strong industry connections with a major designed to meet employer needs by providing first-hand practical experience.



## Bachelor of Business and Environmental Science

Fees: \$12,400\* | ATAR: 63.2

- WHAT TO EXPECT
- Develop skills that allow you to integrate and apply theoretical and technical knowledge of business and environmental science, and apply in-depth knowledge of sustainability principles in tropical contexts.
  - Explore the important and challenging work of balancing profit, policy, and conservation with the Bachelor of Business and Environmental Science. Study the effects of human behaviour on climate, and learn to plan and lead sustainable business practices.
  - Access some of the most environmentally interesting places on Earth and explore unrivalled World Heritage natural environments. Support your research with genuine fieldwork and build a strong industry network through JCU's direct links to peak industry bodies.

- ★ CAREER OPPORTUNITIES
- Environmental advisor

• Consultant

• Aquaculturist

• Environmental scientist

• Environmental consultant

MAJORS

**Aquaculture**

Experience the hands-on-discovery of sustainable aquaculture practices, with access to the Marine and Aquaculture Research Facility. Students will explore the scientific and practical applications of farming plants and animals in all types of water environments. JCU graduates have a deep understanding of the biodiversity of species, the design of aquaculture systems and the basics of nutrition.



## Bachelor of Commerce

Fees: \$13,680\* | ATAR: 59.4

- WHAT TO EXPECT
- Build a creative and innovative mindset with a course designed to future-proof a career in commerce. Gain an understanding of foundational concepts of commerce before choosing to major in one area of study or strengthen your knowledge, skill set and employment opportunities through a double major.
  - Broaden your horizons and gain a global perspective by completing a study period at JCU Singapore, or at one of our 52 partnering universities around the world. Develop essential job-readiness skills through the work-integrated learning capstone program to allow you to graduate work-ready with confidence.
  - As a commerce graduate, your skills are relevant to a large number of businesses and industries. Your major specialisation will provide pathways and job opportunities for career success. You will have the ability to understand the importance of data-driven decision making – a quality highly valued by employers.

\* Estimated annual Commonwealth supported fee, plus Student Services and Amenities Fee. Fee deferral and scholarships available if eligible

**LEGEND** C JCU Cairns T JCU Townsville M JCU Mackay I JCU Mount Isa S JCU Singapore B JCU Brisbane Study online Trimester intake 3 Course duration in years Professional experience placements Professional accreditation Field trips



# Business and Commerce

JCU Business is a leader in building practical, professional skills and knowledge. A strong focus on professional development and multidisciplinary education enables our graduates to excel. Succeed in enterprise across a diverse range of commercial, government and civil society endeavours.

**Skills development**  
 Employability skills embedded in study

**Industry experience**  
 Develop professional skills during internships

**Five stars**  
 for student support  
Good Universities Guide 2023, UG Business

# Dentistry

JCU Dentistry is a leader in health equality. Experience working in a range of settings, from rural and remote communities to city areas and international placements. Dentistry graduates work independently in challenging situations.

**#1 in Australia**  
 for full-time employment  
Good Universities Guide 2023, UG Dentistry

**#1 in Australia**  
 for median graduate salary  
Good Universities Guide 2023, UG Dentistry

**#1 in Queensland**  
 for learning resources, skills development and student support  
Good Universities Guide 2023, UG Dentistry

BUSINESS

**★ CAREER OPPORTUNITIES**

- Accountant: taxation, insolvency, forensic, audit
- Business manager
- Corporate financial manager
- Data analyst / consultant
- Economist
- Foreign exchange trader
- Investment banker/manager
- Economic advisor

## MAJORS

**Accounting**

Contribute to the most critical function of all businesses and organisations - financial viability. Learn how to recognise financial patterns and be an efficient problem solver for businesses in various industries. Core subjects give you foundational skills in decision making, analysis and interpreting data for businesses. Gain an in-depth understanding of financial management, company accounting, taxation and auditing.



**Banking and Finance**

Study financial markets and institutions, credit, treasury, investment and risk management. You will learn different approaches to managing financial institutions, including commercial banks and rural cooperatives. This major focuses on the banking industry and explores financial activities from a global perspective. You will develop the skills to assess and manage the financial needs to help businesses develop and thrive. Your future employers will value your understanding of commercial theory and hands-on technical knowledge.



**Economics**

Develop the skills to predict the behaviour of market participants, including governments, businesses, and consumers. Become essential to the success of your organisation by anticipating and effectively communicating the behaviour of market participants. Explore drivers of economic growth and government policy options to shape that growth, as well as exploring decision-making tools for managers and how to conduct cost-benefit analysis. You will gain knowledge about economics at the individual level by exploring consumer decision making, and the behavioural foundations of those decisions.



**Financial Advising**

Expand your decision making and analytical skills. Be equipped to recognise financial information and assist people to achieve their financial goals. Learn to identify potential issues for a client, viable investment opportunities and practical strategies to ensure their financial stability. Choose from a variety of specialisations that give you flexibility in a career with job security.



**Financial Management**

Study business modelling, investment and portfolio management, financial risk management and multinational business finance to enable you to manage and finance businesses effectively and efficiently within a global business environment. With financial management skills that are transferable to most industries, you can forge your own career path.



**International Trade**

Gain a global perspective and develop analytical, communication, and critical thinking skills to pursue a career that crosses borders. Build a strong understanding of the fundamentals of finance and international trade law. Take your place in the global boardroom with skills to explain strategic, interpersonal, and psychological aspects of business negotiation. Learn how to network and influence stakeholders with creative and innovative thinking in the communication of complex business analyses. In an increasingly globalised world, your ability to evaluate and analyse opportunities in international trade will make you a valued employee around the world.



## Bachelor of Dental Surgery

**Fees:** \$10,025\* | **ATAR:** Special Entry Requirements

### WHAT TO EXPECT

- Gain a comprehensive education in oral health and health care in Australia, and train to meet the need for highly-skilled dentists in rural, remote, and Indigenous communities.
- Study the foundational theory of dental science and the promotion of oral health care in underserved communities. Train alongside experienced, supportive professionals and explore issues of concern, particularly relating to tropical, rural, and Indigenous practice.
- Develop practical work skills in JCU's world-class dental teaching complex, with a fully-equipped clinical simulation laboratory. Apply your theoretical knowledge as you assess, diagnose, and perform dental work on real patients.

**★ CAREER OPPORTUNITIES**

- Private practice
- Hospitals
- Community health services
- Australian Defence Force
- Education
- Research

The Bachelor of Dental Surgery (Honours) degree is available for high-achieving students.



DENTISTRY

\* Estimated annual Commonwealth supported fee, plus Student Services and Amenities Fee. Fee deferral and scholarships available if eligible



# Education

JCU Education is a leader in providing high-quality professional experience in a variety of settings. Benefit from leading lecturers and JCU’s strong partnerships with Queensland schools.

#1 in Queensland

for full-time employment

Good Universities Guide 2023

Unique opportunities

Study and work in metropolitan, rural and remote communities.

Five stars

for median graduate salary

Good Universities Guide 2023, UG Education



“The lecturers are more than happy to take their time out and explain things if you need help. All of the professors have been dedicated to doing the job and getting everyone through and making sure everyone understands the content.”

**Steven Cromb**  
BACHELOR OF EDUCATION (PRIMARY) ALUMNI

## Bachelor of Education (Early Childhood Education)

Fees: \$4,124\* | ATAR: 70.0

### WHAT TO EXPECT

- Gain professional experience in your first year and complete a total of 120 days of workplace learning over the course of your degree. Take advantage of JCU’s strong partnerships with childcare centres, kindergartens, preschools and primary schools to develop your network and build practical job skills.
- Benefit from a wide range of placement opportunities across your degree in regional, rural and remote areas. Develop skills to improve Indigenous education outcomes and leverage a world-class education into a career that will change lives, including your own.
- Graduate with a comprehensive understanding of the early years learning curriculum, play-based learning and key teaching strategies to be a successful leader in child care centres and in Prep to Year Three in primary schools.
- Graduates have a nationally accredited degree that enables them to be employed across Australia and internationally. Graduates can pursue careers in education in schools, preschools, kindergartens and childcare centres.



## Bachelor of Education (Primary)

Fees: \$5,070\* | ATAR: 70.0

### WHAT TO EXPECT

- Promote life-long learning in primary school students with the Bachelor of Education (Primary). Benefit from a wide range of placement opportunities across your degree in regional, rural and remote areas. Develop specialist education skills relevant to teaching in rural and remote communities, and supporting Indigenous educational outcomes.
- Study Queensland’s Prep to Year Six curriculum and experience relevant workplace learning in primary school settings. Gain professional experience from your first year in state, Catholic and independent schools.
- Participate in 95 days of placements in a range of school settings, including rural and remote areas to expand your employment options. Learn to critically evaluate and apply contemporary research to provide inclusive learning environments for diverse student needs.
- Choose a specialist strand such as English/literacy, mathematics/ numeracy, science and health and physical education.



## Bachelor of Education (Secondary)

Fees: \$7,340\* | ATAR: 70.0

### WHAT TO EXPECT

- Learn to establish positive and engaging learning environments for secondary school students. Benefit from a wide range of placement opportunities across your degree in regional, rural and remote areas. Develop skills to improve Indigenous education outcomes, and leverage a world-class education into a career that will change lives, including your own.
- Gain a full understanding of intercultural and ethical approaches to professional practice. Base your teaching on current research and policy that addresses social justice, diversity and sustainability.
- Take part in 95 days of placements in practical settings and experience teaching in metropolitan, rural and remote locations. Make a positive difference in the lives of young people, and improve outcomes for Aboriginal and Torres Strait Islander students.
- Graduates pursue careers both in Australia and overseas, in public, independent, and Catholic schools. You could find employment as a secondary teacher, or pursue roles in education management, government departments, or community development.
- As an Education (Secondary) student, you typically choose two teaching areas to specialise in, including biology, business, chemistry, economics, English, French, geography, health and physical education, history, information communication technologies (ICT), Japanese, legal studies, mathematics, music, physics, industrial technologies and design, visual arts and food technologies and design.



★ CAREER OPPORTUNITIES

• Primary school teacher

• High school teacher

• Early childhood teacher

• EAL/D Teacher



# Engineering

JCU Engineering is a leader in developing qualified engineers who help solve some of the world's most challenging problems. Exceptional employment outcomes enable graduates to future-proof their career.

## #1 in Australia

for student support

Good Universities Guide 2023, UG Engineering

## Five stars

for teaching quality

Good Universities Guide 2023, UG Engineering

## Five stars

for full-time employment

Good Universities Guide 2023, UG Engineering

## Bachelor of Engineering (Honours)

Fees: \$7,250\* | ATAR: 75.0

### WHAT TO EXPECT

- Prepare yourself for the challenges of today and tomorrow through an engineering course shaped by industry. An outstanding graduate employment rate and a strong focus on hands-on skills enable you to be job ready upon graduation.
- Build a thorough understanding of engineering fundamentals in your first year. Deepen your knowledge and focus on theoretical and practical learning. Study a specialised major plus one minor.
- Gain hands-on skills through practical laboratory classes and field trips. Participate in 12 weeks of work placements with industry partners.
- Studies culminate in the fourth year with an Honours component — a major engineering project and thesis. You will research a current industry issue and work towards designing a solution.

### ★ CAREER OPPORTUNITIES

- Electronics design engineer
- Robotics software engineer
- Asset performance engineer
- Process engineer
- Structural engineer
- Mechanical design engineer
- Power engineer
- Water and waste engineer
- Geotechnical engineer
- Telecommunications engineer

### MAJORS

#### Chemical Engineering

Create, manipulate and design products using raw materials and chemistry and physics principles. Become an expert in the intricacies of reactor design and modelling and learn how to comprehend the concepts of instrumental analysis. Build an in-depth understanding of advanced chemical technologies such as minerals processing, extractive metallurgy and bioprocessing.



#### Civil Engineering

Benefit from JCU's expert lecturers and explore various civil engineering disciplines such as structural, hydraulic, geotechnical, transport and environmental engineering. You will have the skills to work in design, construction and maintenance of infrastructure such as buildings, bridges, roads, railways, airports, ports, water supply systems, dams, mines and waste disposal systems.



#### Electrical and Electronic Engineering

Learn how to design and maintain electrical energy infrastructure through the application of electrical and electronic principles. You will integrate theory with practice and visit power utilities, mines and other industry sites. Build a comprehensive knowledge of electrical materials, circuit theory, single phase and three phase power system modelling and signal processing.



#### Electronic Systems and Internet of Things (IoT) Engineering

Build the next generation of electronic technology. Design electronics hardware and software for diverse applications such as manufacturing, automation, wearables, agriculture, energy, and more. Gain specialist skills in machine learning, sensor technologies, and wireless communication in modern facilities including the JCU Ideas Lab.



#### Mechanical Engineering

Understand the principles of mechanics and thermodynamics to analyse, design, manufacture and maintain machines across almost all industries. Learn skills that will see you working in design, manufacturing and maintenance of machines — from cars and robots to supersonic jets and renewable energy systems.



### MINORS

You can choose to specialise your degree through minors in Infrastructure and Planning, Mechatronics, Mining and Minerals, Data Science, Software, Water Resource Management, Sustainability, Physics and Mathematics.

\* Estimated annual Commonwealth supported fee, plus Student Services and Amenities Fee. Fee deferral and scholarships available if eligible

**LEGEND**  JCU Cairns  JCU Townsville  JCU Mackay  JCU Mount Isa  JCU Singapore  JCU Brisbane  Study online  Start Semester 1  Start Semester 2  Trimester Intake  
 Course duration in years  Professional experience placements  Professional accreditation  Field trips



*“Engineering at JCU offers cutting-edge learning and equipment within a small and supportive environment. With a range of majors and minors, your Engineering degree at JCU can be tailored to your interests and career goals. Our excellent graduate outcomes speak for themselves – JCU engineering graduates are future-ready and in very high demand.”*

**Dr Stephanie Baker**

LECTURER, ELECTRONIC SYSTEMS AND INTERNET OF THINGS ENGINEERING



# Environmental Management

JCU Environmental Management is a leader in ethical and sustainable management practices. Programs designed in collaboration with industry provide graduates with exemplary professional practice skills — because experience has no substitute.

## #1 in Australia

for sustainable education

QS Sustainability Rankings 2023

## #1 in Queensland

for skills development

Good Universities Guide 2023, UG Ag & Environment

## Five stars

for median graduate salary and learner engagement

Good Universities Guide 2023, UG Science & Maths

## Bachelor of Environmental Science and Management

Fees: \$9,151\* | ATAR: 63.2

### WHAT TO EXPECT

- Prepare yourself to take on the critical environmental and sustainability challenges facing the world today. Learn about the social and institutional aspects of environmental management and how to translate science into impactful outcomes.
- As a JCU Environmental Science and Management student, you'll develop an understanding of how to manage the interactions between people and the environment, and find solutions to complex environmental problems. In your final year, build connections and participate in a final year professional placement and work experience.
- Start your professional career with all the skills you need to meet a growing demand for STEM-literacy, with options work in environmental policy development, as a wildlife or plant ecologist, in mining rehabilitation or environmental advocacy, to name a few.

### ★ CAREER OPPORTUNITIES

- |   |   |
|---|---|
| • Environmental manager                     | • Environmental planner                     |
| • Sustainability adviser                    | • Environmental consultant                  |
| • Environmental compliance project manager  | • Environmental approvals specialist        |
| • Urban environments and landscape designer | • Sustainability and environmental educator |

### SPECIALISATIONS

This unique course offers the opportunity to specialise in one or two of the following:

#### Biodiversity Assessment and Management

Gain the skills to assess and manage aquatic and terrestrial species. Learn the essential concepts of biodiversity, biological processes and ecology. Students will apply these concepts in upper-level specialised classes. Modern field methods are used during field-based subjects in World Heritage listed coastal, coral reef and rainforest environments, and tropical savannahs.



#### Environmental Practice

Combine knowledge in environmental law, policy, planning and human dimensions, with environmental skills, to tackle global sustainability challenges with greater impact. Learn how to navigate diverse socio-political contexts and apply your environmental skills.



#### Land and Water Management

Learn about physical geosciences, environmental processes and impacts on land, wetlands, river catchments and coasts. You will develop your knowledge of how the Earth functions as a dynamically interactive system. With tutelage from expert lecturers, students master the fundamentals of hydrology, geomorphic patterns and processes, soil science and natural hazards. Benefit from field-based studies, accessing unrivalled geographical and climatically diverse landscapes, including the Great Barrier Reef catchments.



*“The Bachelor of Environmental Science and Management is the perfect steppingstone for those passionate to make a real-world difference regarding environmental management and climate change. The interdisciplinary skills I have gained throughout my degree have allowed me to confidently approach challenges, such as working on a project with Mediators Beyond Borders Oceania, which aims to mitigate climate change conflict in Fiji. My advice to those thinking about pursuing a career in science is, just go for it!”*

**Clancy Walker-Fitzgerald**

BACHELOR OF ENVIRONMENTAL PRACTICE STUDENT

\* Estimated annual Commonwealth supported fee, plus Student Services and Amenities Fee. Fee deferral and scholarships available if eligible

**LEGEND**  JCU Cairns  JCU Townsville  JCU Mackay  JCU Mount Isa  JCU Singapore  JCU Brisbane  Study online  Start Semester 1  Start Semester 2  Trimester Intake  
 Course duration in years  Professional experience placements  Professional accreditation  Field trips



# Geoscience

JCU offers an unmatched opportunity for field-based geology education in some of the world's most important mineral provinces and iconic landscapes. A strong focus on practical fieldwork and industry connections empowers our graduates to be ready for tomorrow's challenges.

## Five stars

for median graduate salary and learner engagement

Good Universities Guide 2023, UG Science & Maths

## #1 in Australia

for sustainable education  
QS Sustainability Rankings 2023

## Access the best

Hone your skills in JCU's Economic Geology Research Centre

## Bachelor of Geology

Fees: \$7,990\* | ATAR: 66.5

### WHAT TO EXPECT

- Benefit from specialist geological knowledge and study the only Bachelor of Geology degree in Australia.
- Build an in-depth understanding of geoscience with a focus on exploration, mining, groundwater, and clean energy. Learn about global economic geology and participate in current geological research projects through JCU's on-campus Economic Geology Research Centre.
- Consolidate theoretical learning with frequent field trips and on-site practice. JCU's unique location and close links with exploration/mining, allied engineering industries and conservation organisations allow unique access to fascinating locations.
- JCU Geology graduates are uniquely skilled with strong connections to industry and gain extensive experience undertaking fieldwork.
- Geoscientists are highly sought after in the mining, resources and energy industries, which are among the highest paying industry sectors in Australia. Careers in geoscience are also found in environmental monitoring and management, natural resource and water management, geotechnical engineering and construction, natural hazard identification and mitigation, spatial sciences, museums, education and in scientific organisations and government entities.

### ★ CAREER OPPORTUNITIES

- Geoscientist
- Environmental geologist
- Resource geologist
- Palaeontologist
- Mine geologist
- Exploration geologist

 Only first year available in Cairns



*“Studying Geology at JCU has been amazing for developing the practical skills I needed with loads of hands-on experience. I now have so many career options available to me, everything from working in soil sciences to hydrogeology, mineralogy, or even environmental consultancy.”*

**Elora Baird**

BACHELOR OF GEOLOGY STUDENT

\* Estimated annual Commonwealth supported fee, plus Student Services and Amenities Fee. Fee deferral and scholarships available if eligible

**LEGEND**  JCU Cairns  JCU Townsville  JCU Mackay  JCU Mount Isa  JCU Singapore  JCU Brisbane  Study online  Start Semester 1  Start Semester 2  Trimester Intake  
 Course duration in years  Professional experience placements  Professional accreditation  Field trips



# Information Technology

JCU Information Technology is a leader in design thinking. A strong focus on student engagement develops graduates who are agile thinkers and innovative developers. Get ready for jobs of the future with an Information Technology degree from JCU.

## #1 in Australia

for student support

Good Universities Guide 2023, UG Eng & Technology

## Access the best

Learn from lecturers and industry professionals committed to your success

## Five stars

for teaching quality

Good Universities Guide 2023, UG Eng & Technology

## Bachelor of Information Technology

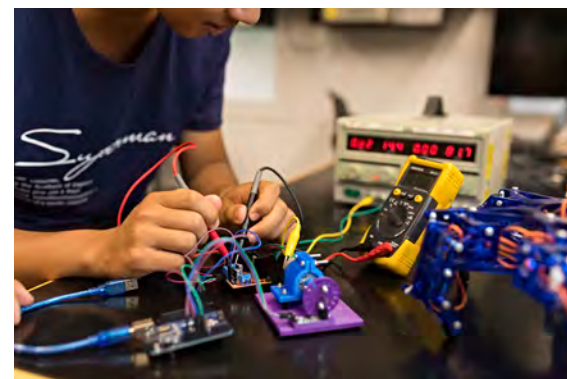
Fees: \$8,301\* | ATAR: 63.2

### WHAT TO EXPECT

- Study alongside those who share your vision for what Information Technology can do to improve business, science and society.
- Master the essential knowledge and best practices needed to build a thriving career in Information Technology. Leaders in design thinking, JCU's lecturers and tutors will develop you as a problem solver and innovative thinker.
- Work on real-world projects in industry through hackathons, technology design sprints, internships, placements or projects.
- Experience computer laboratories with specialist features for software design, computer science, networking, multimedia/game design and programming.
- Study contemporary and industry-required skill sets including databases, programming, artificial intelligence, cybersecurity, machine learning, data mining and cloud computing.
- You may also be interested in the Bachelor of Engineering (Honours) – Bachelor of Information Technology.

### ★ CAREER OPPORTUNITIES

- IT project manager
- Software developer
- Simulation designer
- Game tester/reviewer
- Enterprise architect
- Web designer
- Mobile app developer
- Information and cyber security specialist
- Business analyst
- Network designer
- IT application specialist



\* Estimated annual Commonwealth supported fee, plus Student Services and Amenities Fee. Fee deferral and scholarships available if eligible

**LEGEND** JCU Cairns JCU Townsville JCU Mackay JCU Mount Isa JCU Singapore JCU Brisbane Study online Start Semester 1 Start Semester 2 Trimester Intake Course duration in years Professional experience placements Professional accreditation Field trips



*“Never before has the study of IT been more critical than in the last three years. It has ensured the continuity of economic stability despite interrupted labour markets and supply chains. The technology industry continues to grow rapidly, and so does the demand for the next generation of IT professionals. Studying Information Technology at JCU has streamlined my software development skills and has enabled me to build my own online software business. IT ensures a pathway into the future for economic security in the everchanging and unpredictable world in which we live.”*

**Owen Herbert**

BACHELOR OF INFORMATION TECHNOLOGY STUDENT



# Law



JCU Law is a leader in providing a skills-based and multidisciplinary legal education. An emphasis on independent thinking and innovative problem solving develops graduates equipped for contemporary legal practice. Make a positive difference to people and societies with a JCU Law degree.

## Graduate job-ready

Accredited study for admission to practise law in Queensland

## Five stars

for student teacher ratio  
Good Universities Guide 2023

## Finish sooner

Get a head-start on your career with a streamlined 3-year program

## Bachelor of Laws

Fees: \$15,142\* | ATAR: 75.7

### WHAT TO EXPECT

- Challenge yourself and gain exposure to contemporary issues, the latest research and new ideas across diverse areas of the practice and application of law.
- JCU students learn the role of law in social, economic, environmental, and political contexts and its significance for stable government, economic prosperity and the protection of individual and cultural rights.
- Graduates must complete approved practical legal training with either a traineeship at a firm or via a practical legal training course to complete the requirements to practice as a lawyer.
- You may also be interested in the Bachelor of Arts–Bachelor of Laws, the Bachelor of Business–Bachelor of Laws, or the Bachelor of Science–Bachelor of Laws.

### ★ CAREER OPPORTUNITIES

- Lawyer
- Solicitor
- Barrister
- Paralegal
- Law clerk
- Public prosecutor
- Community lawyer
- Legal officer or in-house counsel for large companies



*“JCU offers a high standard of teaching and a strong support system for law students. The teachers have a good attitude towards teaching, have an incredible understanding of the content and are open to feedback. Students have great networking opportunities, such as get-togethers and guest lecturers.”*

**Alice Bosanquet**

BACHELOR OF LAWS STUDENT

\* Estimated annual Commonwealth supported fee, plus Student Services and Amenities Fee. Fee deferral and scholarships available if eligible

Please note: Information is subject to change

**LEGEND** JCU Cairns JCU Townsville JCU Mackay JCU Mount Isa JCU Singapore JCU Brisbane Study online Start Semester 1 Start Semester 2 Trimester Intake Course duration in years Professional experience placements Professional accreditation Field trips



# Marine Science



JCU Marine Science is a leader in experiential learning with a strong focus on using new technologies. Students learn from the best in the world, with JCU ranked number one in the world for Marine and Freshwater Biology\*.

## #1 in Australia

for sustainable education  
QS Sustainability Rankings 2023

## #1 in Queensland

for full-time employment  
Good Universities Guide 2023

## Five stars

or median graduate salary and learner engagement  
Good Universities Guide 2023, UG Science & Maths

# Medicine

JCU Medicine is a leader in socially accountable medicine. Be equipped with the skills to make an impact — improve health care in underserved communities or make life-changing discoveries.

## #1 in Australia

for median graduate salary  
Good Universities Guide 2023, UG Medicine

## #1 in Queensland

for overall educational experience  
Good Universities Guide 2023, UG Medicine

## Five stars

for learner engagement  
Good Universities Guide 2023, UG Medicine

## Bachelor of Marine Science

Fees: \$7,470\* | ATAR: 78.1

### WHAT TO EXPECT

- Study in JCU's advanced research aquariums and laboratories. Learn how to manage human impacts and preserve dynamic marine environments.
- Undertake research at the JCU Orpheus Island Research Station, or on site at the various coral reef, island, seagrass and mangrove environments visited when completing this degree.
- Develop high-level skills in evolving technologies that are providing solutions to previously unsolvable problems. Build your capabilities in the use of seabed mapping and fish assessment sonar, oceanographic sensors and a range of technology used for gathering data above and below the waves.
- Be part of an interdisciplinary degree where you develop core skills across several foundational scientific disciplines while learning key technologies applied in the marine environment.
- Tailor your degree to suit your interests with options to specialise in chemistry, earth science, environmental science, fisheries, marine biology, maths or physics.
- Progress your studies and further your skills and knowledge with a Bachelor of Science (Honours).

### ★ CAREER OPPORTUNITIES

- Marine conservation officer
- Marine and biotech scientist
- Marine planner
- Marine education and communication
- Oceanographer
- Environmental manager
- Marine environmental consultant



*“I love that JCU’s Bachelor of Marine Science is not a one-size-fits-all degree and gives you so many different career options to pursue. When choosing where to study, I realised JCU’s unique location was so important – the opportunity to study Marine Science on the Great Barrier Reef was a game changer.”*

**Courtney Burns**

BACHELOR OF MARINE SCIENCE STUDENT

## Bachelor of Medicine, Bachelor of Surgery

Fees: \$11,800\* | ATAR: Special Entry Requirements

### WHAT TO EXPECT

- Become a leader in socially accountable medicine, graduating as a highly regarded, work-ready health professional. JCU's Bachelor of Medicine, Bachelor of Surgery is the only six-year undergraduate medical course offered in Northern Australia.
- Excel with small classes and personalised support from passionate teachers in modern facilities. Develop extensive clinical skills to make a real difference in the health of regional, rural, remote and Australian Aboriginal and Torres Strait Islander communities.
- Consolidate theoretical study with hands-on clinical placements from your first year. Gain valuable experience with extended placements in diverse communities, from the outback to the Torres Strait.
- JCU Bachelor of Medicine, Bachelor of Surgery graduates are exceptionally skilled doctors who are employed in a range of medical settings. You could find employment in various specialties across Australia and internationally.

### ★ CAREER OPPORTUNITIES

Depending on your specialisation and further study, you could find employment in a range of roles including:

- Anaesthetist
- Oncologist
- Cardiologist
- Paediatrician
- Dermatologist
- Psychiatrist
- Emergency medicine
- Radiologist
- General practitioner
- Rural generalist
- Neurologist
- Surgeon
- Obstetrician



*“I would definitely recommend the JCU Medicine program to anyone. It is a good university. The full six years of the program allow you to come straight out of High school and to grow and be ready to become a doctor. I wouldn’t change it, and I wouldn’t have gone anywhere else.”*

**Dr Ainsley Walsh**

BACHELOR OF MEDICINE, BACHELOR OF SURGERY  
GRADUATE

\*Centre for World University Rankings 2017 ^Estimated annual Commonwealth supported fee, plus Student Services and Amenities Fee. Fee deferral and scholarships available if eligible



# Nursing and Midwifery

JCU Nursing and Midwifery is a leader in regional, rural and tropical healthcare sciences. A vibrant learning culture fosters highly-skilled and knowledgeable graduates. With an emphasis on person-centred, evidence-based care, Nursing and Midwifery students develop the confidence and experience to be valuable and skilled healthcare professionals.

#1 in Queensland

for full-time employment

Good Universities Guide 2023, UG Nursing

#1 in Australia

for sustainable education

QS Sustainability Rankings 2023

Five stars

for median graduate salary

Good Universities Guide 2023, UG Nursing

## Bachelor of Nursing Science

Fees: \$5,650\* | ATAR: 66.45

- WHAT TO EXPECT
- Work with people from diverse cultural backgrounds and plan and implement contemporary nursing care at an individual and community level.
  - This three-year, full-time course focuses on nursing in our northern tropical context. It prepares you to work in multiple settings, from large metropolitan hospitals to rural and isolated practice clinics.
  - You also have the option to study this degree through a combination of online resources and on-campus residential workshops. Benefit from excellent resources, regular tutor contact and extensive supervised professional placement and clinical experience in real-world settings, beginning in your first year.
  - JCU Nursing graduates are known for their skill, care and work across Australia and internationally. Graduates work in a variety of areas, such as metropolitan hospitals, rural and regional centres, government departments and defence, non-government agencies and community health. Your nursing career can lead to working in a wide range of areas including emergency, intensive care, mental health, aged care, cardiology, surgical, theatre and many more.



★ CAREER OPPORTUNITIES

- Royal Flying Doctor Service
- Hospitals
- Private practice
- General practice
- Australian Defence Force
- Community health services
- Schools

- Education
- Research
- Health tourism
- Child, youth and family health
- Caseload midwifery
- Community midwifery

## Bachelor of Nursing Science – Bachelor of Midwifery

Fees: \$5,170\* | ATAR: 83.65

- WHAT TO EXPECT
- JCU’s Bachelor of Nursing Science – Bachelor of Midwifery is a comprehensive program that will prepare you for success in the healthcare industry. Follow your dream of supporting women and their families through pregnancy, birth and into motherhood, and play a vital role in promoting health and wellbeing across the life span.
  - Work in JCU’s well-equipped clinical simulation laboratories, studying nursing and midwifery concurrently from your first year of study. Build your knowledge and skills through extensive supervised professional practice.
  - During your placements, you will apply theoretical knowledge in a practical context, for a smooth transition into the workplace. Gain experience with our partner hospitals and health services.
  - Your midwifery pathway enables you to work in a variety of maternity models including midwifery group practice, birth centre care and in maternity units. Your nursing career pathway could include emergency nursing, intensive care, aero-medical services, special care nursery, women’s health, child health and many others.





# Occupational Therapy

JCU Occupational Therapy is a leader in developing inclusive societies. Students complete 1,000 hours of clinical placements in a range of healthcare settings, including at the JCU Health Occupational Therapy Clinic, assisting them to become client-centred and holistic health professionals.

## #1 in Australia

for full-time employment  
Good Universities Guide 2023, UG Rehabilitation

## Five stars

for median graduate salary and student support  
Good Universities Guide 2023, UG Rehabilitation

## Experiential learning

Benefit from over 1,000 hours of professional placement

# Pharmacy

Make a difference to people's lives and improve the health of communities. JCU Pharmacy is ranked the number one pharmacy degree in Queensland for learner engagement, skills development and employment outcomes.\* Prepare for career success with a JCU Pharmacy degree.

## #1 in Australia

for full-time employment  
Good Universities Guide 2023, UG Pharmacy

## Five stars

for median graduate salary  
Good Universities Guide 2023, UG Pharmacy

## #1 in Australia

for learner engagement  
Good Universities Guide 2023, UG Pharmacy

## Bachelor of Occupational Therapy (Honours)

Fees: \$7,810\* | ATAR: 72.45

### WHAT TO EXPECT

- Learn how to apply contemporary therapeutic approaches to enable people to participate in the activities that are important to them. Benefit from JCU Occupational Therapy's special focus on rural and remote settings.
- Learn theory, professional practice and clinical skills for a diverse range of clients and circumstances. Take part in over 1,000 hours of professional work placements to develop the experience necessary to excel in your career.
- Students graduating with the research honours major undertake a research project in an area of specialisation, while students graduating with the professional honours major undertake a professional project.

### ★ CAREER OPPORTUNITIES

- Public and private hospitals
- Rehabilitation units
- Community health centres
- Aged care facilities
- Mental health services
- Schools
- Independent living centres
- Vocational rehabilitation settings
- Private practice



*“Studying at JCU has provided me with so many valuable learning experiences that have expanded my knowledge and professional development. I love all that this degree has had to offer including the opportunity to complete my practical placements within rural and remote communities.”*

### Mackenzie Mete

BACHELOR OF OCCUPATIONAL THERAPY (HONOURS)  
STUDENT

## Bachelor of Pharmacy (Honours)

Fees: \$8,301\* | ATAR: 76.0

### WHAT TO EXPECT

- Learn about the practical use of medicines, preventative healthcare strategies, and effective communication.
- Study a comprehensive range of core subjects including chemistry, human anatomy, physiology, biology, pharmacology, therapeutics, and research.
- Become skilled through hands-on experience with clinical placements in low-resource communities, where you'll get to make a real difference to the health of regional, rural, remote, and Australian Aboriginal and Torres Strait Islander communities.
- With over 600 hours of placement, JCU's Bachelor of Pharmacy (Honours) degree has one of the highest number of clinical placement hours for any undergraduate pharmacy degree within Australia.

### ★ CAREER OPPORTUNITIES

- Community pharmacist
- Hospital pharmacist
- Drug and research development
- Health service management
- Consultant pharmacist
- Defence Force pharmacist
- Work in aged care homes, GP clinics and community clinics
- Educator / Academic



*“I have had a fantastic time at JCU. I've been lucky enough to go on placement to unbelievable locations, from rural Tasmania all the way to the Torres Strait. I have had both hospital and community pharmacy experience, in metropolitan areas as well as rural and remote regions. I believe that these placement experiences are what set JCU apart from other universities.”*

### Hayley Rosadi

BACHELOR OF PHARMACY GRADUATE

\* Estimated annual fee, plus Student Services and Amenities Fee. Fee deferral and scholarships available if eligible



# Physiotherapy

JCU Physiotherapy is a leader in improving function and quality of life. A strong focus on ethical and professional practice, as well as an emphasis on serving rural and remote communities, equips our students to make a difference. Knowledge and skills gained through extensive clinical placements produces graduates who are ready today for tomorrow.

## #1 in Australia

for full-time employment

Good Universities Guide 2023, UG Rehabilitation

## Five stars

for median graduate salary and student support

Good Universities Guide 2023, UG Rehabilitation

## #1 in Queensland

for skills development

Good Universities Guide 2023, UG Rehabilitation

## Bachelor of Physiotherapy

Fees: \$7,875\* | ATAR: 92.0

### WHAT TO EXPECT

- Make a difference with the Bachelor of Physiotherapy. Receive complete support with mentoring in your first year, and network with students from occupational therapy and speech pathology.
- The Bachelor of Physiotherapy has a focus on ethical and professional practice alongside extensive clinical placements to be prepared for every aspect of the job. Develop professional skills to meet the needs of people in rural, remote and Indigenous communities.
- Learn from JCU's dedicated lecturers and tutors, who are leaders in their fields. Develop your clinical skills at the JCU Musculoskeletal Physiotherapy Clinic.
- JCU Physiotherapy graduates have a positive impact on their communities. You could work in aged care services, community health centres, hospitals, private practices, schools or sports and rehabilitation clinics.

### ★ CAREER OPPORTUNITIES

- Aged care services
- Community health centres
- Hospitals
- Private practices
- Schools
- Sports and rehabilitation clinics



*“Studying physiotherapy at JCU is one of the most challenging yet rewarding experiences you can have at university. The exposure to practical skills and guidance from highly skilled educators are second to none. It’s an educational opportunity that is genuinely enjoyable and has sparked my passion for physiotherapy.”*

**Wyatt Raymond**

BACHELOR OF PHYSIOTHERAPY GRADUATE

\* Estimated annual Commonwealth supported fee, plus Student Services and Amenities Fee. Fee deferral and scholarships available if eligible

**LEGEND** JCU Cairns JCU Townsville JCU Mackay JCU Mount Isa JCU Singapore JCU Brisbane Study online Start Semester 1 Start Semester 2 Trimester Intake  
 Course duration in years Professional experience placements Professional accreditation Field trips

# Planning



JCU Planning is a leader in regional planning and urban design. A focus on improving liveability in a changing climate develops graduates who deliver functional, sustainable towns and cities. Learn how to implement urban design that is resilient to disasters and protects the wellbeing of the 40 per cent of the global population living in the tropics.

## Develop a future focus

Experience urban design and sustainable town planning on multiple levels

## Shape the world

Design compassionate communities and cities for people from all backgrounds

## Experiential learning

Use knowledge developed through project-based learning and internships

## Bachelor of Planning

Fees: \$11,360\* | ATAR: 63.2

### WHAT TO EXPECT

- Study the Bachelor of Planning at JCU in the heart of tropical North Queensland. Experience the relationship and coexistence between World Heritage listed environments and rapidly expanding cities.
- Learn to apply lateral, multidisciplinary thinking when designing better cities and urban areas. Create a balance between lifestyle and sustainability to foster and support communities.
- Gain practical work experience in professional environments including government departments, local council, non-government organisations and private consultancies.
- Apply your conceptual and technical knowledge to the urban and regional planning discipline. You will be able to evaluate and reflect on strategic, statutory, professional and ethical frameworks to perform key urban and regional planning tasks, especially in diverse tropical contexts.
- Undertake field studies in locations where you will learn best practice for planning and preserving the world's growing cities.
- Learn from JCU's experts on subjects including urban design, disaster management and environmental and social impact assessment. Gain important skills such as project management, understanding legislation and how to use geographical information systems.
- JCU Planning graduates are qualified for high-demand positions throughout Australia. Graduates pursue diverse careers that can include developing cities, regions and urban environments to enhance social, environmental and economic wellbeing.
- With extensive industry stakeholder engagement and collaborative projects, employment prospects for JCU Planning graduates are high. This course is fully accredited by the Planning Institute of Australia.

### ★ CAREER OPPORTUNITIES

- Policy analyst
- Transportation planner
- City planner
- Research analyst
- Urban or regional planner
- Land use planner
- Environmental assessment
- Planning principal advisor
- Strategic planning manager
- Government policy officer



*“Planning involves people, place and the environment, both urban and natural. It’s a little bit of everything and that’s why I love it. Studying planning at JCU with a tropical focus puts students in an area of rapid change, incredible social and economic challenge and innovation.”*

**Sarah Gibson**

BACHELOR OF PLANNING GRADUATE



# Psychology

Pursue your interests through a multidisciplinary education in a supportive environment. Gain in-depth knowledge in small classes and connect with lecturers dedicated to supporting your success.

## #1 in Queensland

for median graduate salary  
Good Universities Guide 2023, UG Psychology

## Access the best

Learn from lecturers and industry professionals committed to your success

## Five stars

for student teacher ratio  
Good Universities Guide 2023

# Science

JCU Science is a leader in discovering innovative solutions to complex problems. Our lecturers empower students to discover, explore and pioneer innovative solutions through a strong focus on building hands-on, practical skills. Drive positive change with a JCU Science degree.

## Five stars

for median graduate salary  
Good Universities Guide 2023, UG Science & Maths

## #1 in Australia

for sustainable education  
QS Sustainability Rankings 2023

## Five stars

for learner engagement  
Good Universities Guide 2023, UG Science & Maths

## Bachelor of Psychological Science

Fees: \$10,720\* | ATAR: 69.35

### WHAT TO EXPECT

- Study the human mind and develop a strong foundation of psychological theory, practice, and research skills with JCU's Bachelor of Psychological Science.
- Gain expertise in analytical thinking and scientific research methods relevant to a broad range of careers and further study.
- JCU Psychological Science graduates are sought-after professionals who excel in their chosen fields. Graduates pursue careers in areas including private practice, academic and applied research settings, counselling services, hospitals and schools.
- Tailor your degree to suit your interest. Choose from electives including organisational psychology, environmental psychology, health psychology and intercultural psychology. Build upon the foundation of your undergraduate degree to pursue further study and a career as a clinical psychologist.
- You may also be interested in the Bachelor of Business – Bachelor of Psychological Science, or the Bachelor of Sport and Exercise Science – Bachelor of Psychological Science.

### ★ CAREER OPPORTUNITIES

- Psychologist
- Community services organiser
- Clinical psychologist
- Organisational psychologist
- Business or market researcher



*“I was impressed with the variety of subjects in the Bachelor of Psychological Science, including Forensic Psychology and Personality Psychology. My experience with Indigenous staff and peers have been a highlight and provided rewarding and culturally strong opportunities.”*

### Luana Healey

BACHELOR OF PSYCHOLOGICAL SCIENCE STUDENT

## Bachelor of Advanced Science

Fees: \$7,200\* | ATAR: 92.0

### WHAT TO EXPECT

- Become a science and research leader. JCU Advanced Science graduates are elite, innovative professionals with conceptual development and analytical capabilities to understand complex scenarios and develop creative solutions.
- Study advanced subjects to gain specialised skills in quantitative methods and mathematical techniques. Systematically collect data and design testable hypotheses based on your findings.
- Apply your skills and knowledge to explore an outstanding problem in your chosen field through a research internship working on real-world projects.
- Develop an interdisciplinary outlook to collaborate with colleagues, articulate questions and arguments in constructive ways, and critically appraise your work and the role of science. Use your degree as a pathway to further scientific studies or higher research.

### MAJORS

- Advanced Molecular and Cell Biology
- Aquaculture Science and Technology
- Chemistry
- Data Science
- Earth Science
- Marine Biology
- Mathematics
- Physics
- Zoology and Ecology

Refer to the Shared Majors information for details.

### ★ CAREER OPPORTUNITIES

- Research chemist
- Medical physics specialist
- Restoration ecologist
- Marine operations manager
- Data scientist
- Natural resource scientist

## Bachelor of Science

Fees: \$8,030\* | ATAR: 66.5

### WHAT TO EXPECT

- Kickstart your career in science with hands-on learning in unrivalled locations including the World Heritage listed Great Barrier Reef, the Daintree Rainforest, and dry savannahs. Contribute to sustainable and innovative practices that secure a better future for people and communities in the Tropics.
- Tailor your degree to reflect your interests, right from the start of your studies. Learn the fundamentals of science in your first year, then select one or two specialisations in your chosen disciplines. Broaden your knowledge with a study minor or include elective subjects.
- Throughout your degree, you will develop key employability skills in your chosen science disciplines. Graduate with practical experience and distinguish yourself with your breadth of knowledge and skills.

### MAJORS

- Aquaculture Science and Technology
- Chemistry
- Data Science
- Earth Science
- Internet of Things
- Marine Biology
- Mathematics
- Molecular and Cell Biology
- Physics
- Zoology and Ecology

Refer to the Shared Majors information for details.

### ★ CAREER OPPORTUNITIES

- Analytical chemist
- Hydrologist
- Fisheries manager
- Marine biologist
- Molecular cell biologist
- Quantitative analyst

\* Estimated annual Commonwealth supported fee, plus Student Services and Amenities Fee. Fee deferral and scholarships available if eligible

**LEGEND** JCU Cairns JCU Townsville JCU Mackay JCU Mount Isa JCU Singapore JCU Brisbane Study online Start Semester 1 Start Semester 2 Trimester Intake Course duration in years Professional experience placements Professional accreditation Field trips



# Science



JCU Science is a leader in discovering innovative solutions to complex problems. Our lecturers empower students to discover, explore and pioneer innovative solutions through a strong focus on building hands-on, practical skills. Drive positive change with a JCU Science degree.

## Five stars

for median graduate salary

Good Universities Guide 2023, UG Science & Maths

## #1 in Australia

for sustainable education

QS Sustainability Rankings 2023

## Five stars

for learner engagement

Good Universities Guide 2023, UG Science & Maths

### SHARED MAJORS

#### Advanced Molecular and Cell Biology

Study biochemistry, microbiology, biotechnology and bioinformatics at an advanced level to develop an in-depth understanding of molecular genetics. Learn how to amplify and edit DNA sequences, investigate health and disease at the molecular level and conduct laboratory-based and field-based projects.

Available in the Bachelor of Advanced Science only.



#### Aquaculture Science and Technology

Explore the science behind the large-scale production of aquatic species for food, aquarium, pearl and pharmaceutical applications. Learn about the approaches to support improved production including physiology, nutrition and diet optimisation, genetic selection and disease management.

Available in the Bachelor of Science and Bachelor of Advanced Science.



Bachelor of Advanced Science: major is not available at JCU Singapore.

#### Chemistry

Explore the many areas of chemistry and its foundational role in disciplines including biology, earth and environmental sciences, biomedical and materials science. Learn about organic, inorganic, physical and analytical chemistry to develop cross-disciplinary capabilities and application methods. Benefit from hands-on experience and opportunities to connect with industry partners.

Available in the Bachelor of Science and Bachelor of Advanced Science.



Bachelor of Science: major is only available in the Semester 1 (February) intake.  
Professional accreditation is only available in the Bachelor of Science.

#### Data Science

Be at the forefront of the data science revolution with a Data Science major. Experience the power of data visualisation, big data and machine learning. Mastermind database systems, programs, models and projects. Learn how to develop sophisticated algorithms and create innovative solutions to contemporary problems.

Available in the Bachelor of Science and Bachelor of Advanced Science.



Bachelor of Advanced Science: major is not available at JCU Singapore.

#### Earth Science

Be ready to tackle some of the most important challenges of our day, from climate change and environmental issues to natural resource exploration and management. Learn the fundamentals of geology, physical geography, water, soil, climate and environmental science and develop practical skills with fieldwork studies.

Available in the Bachelor of Science and Bachelor of Advanced Science.



#### Internet of Things

Pioneer the future of technology with a major in Internet of Things. Experience the ever-expanding area of information technology and electronic engineering and learn from leading scientists and engineers. Study microcontroller programming, electric circuits and circuit theory, sensor technologies and statistical data mining for big data.

Available in the Bachelor of Science only.



#### Marine Biology

Explore the critical challenges facing marine and coastal environments in a location that gives you access to one of the most diverse and fragile marine ecosystems in the world – the Great Barrier Reef. Discover the human impact on these environments and how the oceans and atmosphere interact. Learn from expert lecturers and benefit from researchers' strong links with industry.

Available in the Bachelor of Science and Bachelor of Advanced Science.



*“There are so many exciting advancements to be made and challenges to be faced in science. Studying the Bachelor of Science has provided me with the toolkit to be an active problem solver and the curiosity to embark on an incredible journey to discover the inner workings of life.”*

### Michelle Donald

BACHELOR OF ADVANCED SCIENCE STUDENT, MAJORING IN ZOOLOGY AND ECOLOGY AND MOLECULAR AND CELL BIOLOGY

#### Mathematics

Build highly sought-after problem-solving, analytical and quantitative reasoning skills. Gain a thorough understanding of mathematical techniques in areas including optimisation, probability and data analysis. Learn how to formulate mathematical models used in science and engineering contexts and develop techniques to understand their properties.

Available in the Bachelor of Science and Bachelor of Advanced Science.



#### Molecular and Cell Biology

Study the basis of cellular functions and gain insights into complex biological interactions. Gain hands-on experience using the latest equipment and techniques. Develop the foundations needed to work towards developments of modern medicine and biotechnology.

Available in the Bachelor of Science only.



#### Physics

Develop the expertise to explore some of the universe's most challenging questions. Accredited by the Australian Institute of Physics, this major provides you with knowledge and skills across multiple physics disciplines. Study the structure of matter, energy, quantum mechanics, relativity, oceanography, meteorology and thermodynamics.

Available in the Bachelor of Science and Bachelor of Advanced Science.



Bachelor of Science: major is only available in the Semester 1 (February) intake.

#### Zoology and Ecology

Study the organisms surrounding us and the environmental factors that impact them, in some of the most diverse tropical areas in the world. Learn professional approaches to tackle conservation of rare species, control pests and invasive organisms, understand animal behaviour and ecologically model complex scenarios. Develop the skills to identify, conserve and protect vulnerable fauna and flora.

Available in the Bachelor of Science and Bachelor of Advanced Science.



\* Estimated annual Commonwealth supported fee, plus Student Services and Amenities Fee. Fee deferral and scholarships available if eligible

**LEGEND** JCU Cairns JCU Townsville JCU Mackay JCU Mount Isa JCU Singapore JCU Brisbane Study online Start Semester 1 Start Semester 2 Trimester Intake Course duration in years Professional experience placements Professional accreditation Field trips



# Social Work

JCU Social Work is a leader in collaborative learning. A focus on professional practice experience encourages our students to develop a deep understanding of social justice and sustainable societies.

## #1 in Queensland

for full-time employment

Good Universities Guide 2023, UG Social Work

## Experiential learning

Benefit from 1,000 hours  
of professional placement

## Five stars

for median graduate salary

Good Universities Guide 2023, UG Social Work

## Bachelor of Social Work

Fees: \$11,830\* | ATAR: 66.5

### WHAT TO EXPECT

- A Bachelor of Social Work from JCU provides you with the practical skills and experience to begin a rewarding career, with a focus on Australian Aboriginal and Torres Strait Islander people and diverse cultures and communities.
- Learn how to promote positive relationships and champion a just and equitable society. Benefit from passionate educators, modern social research technology and real-world case studies, with an emphasis on sustainability and advocacy.
- Apply your theoretical knowledge to practice through comprehensive field placements in your third and fourth years. Choose from an extensive list of placement settings and organisations, and tailor your placement experience to your particular interest area. Placement options include Queensland Health, the Department of Children, Youth Justice, Multicultural Affairs, and a wide range of other government and non-government agencies.
- JCU Social Work graduates are equipped to advocate for social justice and change in a broad range of environments.

### ★ CAREER OPPORTUNITIES

- Child protection officer
- Mental health counsellor
- Health policy officer
- Health services manager
- Social worker
- Youth worker
- School counsellor



*“My time at JCU has been filled with highlights throughout study, placement, on-campus student activities, and international exchange programs. A highlight has been the chance to mentor first year social work students through the Student Mentor Program and give back to the JCU community.”*

**Finola Rytönen**

BACHELOR OF SOCIAL WORK STUDENT

\* Estimated annual Commonwealth supported fee, plus Student Services and Amenities Fee. Fee deferral and scholarships available if eligible

**LEGEND** JCU Cairns JCU Townsville JCU Mackay JCU Mount Isa JCU Singapore JCU Brisbane Study online Start Semester 1 Start Semester 2 Trimester Intake  
 Course duration in years Professional experience placements Professional accreditation Field trips



# Speech Pathology

JCU Speech Pathology is a leader in improving the lives of people of all ages, particularly those in rural and remote communities. Graduates gain valuable skills and benefit from diverse educational and placement experiences. Develop a competitive edge with a Speech Pathology degree.

## #1 in Australia

for full-time employment  
Good Universities Guide 2023, UG Rehabilitation

## Five stars

for median graduate salary and student support  
Good Universities Guide 2023, UG Rehabilitation

## #1 in Queensland

for skills development  
Good Universities Guide 2023, UG Rehabilitation

# Sport and Exercise Science

JCU Sport and Exercise Science is a leader in enhancing physical performance for everyone from elite athletes to people with chronic conditions. Develop an understanding of the science behind human movement. A focus on building practical skills produces well-rounded graduates who are ready today for tomorrow.

## Five stars

for learner engagement and learning resources  
Good Universities Guide 2023, UG Health Services

## #2 in Australia

for skills development and student support  
Good Universities Guide 2023, UG Health Services

## #1 in Queensland

for full-time employment  
Good Universities Guide 2023, UG Health Services

## Bachelor of Speech Pathology (Honours)

Fees: \$8,790\* | ATAR: 75.7

### WHAT TO EXPECT

- Build a foundation for helping patients. Acquire a thorough understanding in areas such as anatomy, linguistics, psychology, education, health and communication development and impairment.
- Merge theory with real-world situations throughout your speech pathology degree. Learn how to diagnose and manage a diverse range of cases and benefit from JCU's on-campus speech and language clinic. Develop specialist skills to work with children and adults to promote speech and swallowing improvement.
- Practical placements challenge you to apply your theoretical knowledge in a variety of settings. You will have the opportunity to complete placements in rural and Indigenous communities, as well as overseas.
- You will complete a research project for this course as part of the Professional Honours degree or a Research Honours degree.

### ★ CAREER OPPORTUNITIES

- Education settings
- Mental health services
- Hospitals
- Disability services
- Community health centres
- Private practice



*“Speech pathologists go through the human lifespan. You can get jobs in paediatrics — right from when babies are born — all the way through to palliative care. There are so many different places we can work, and we’re in really high demand, especially in rural areas.”*

**Nicole Dunn**

BACHELOR OF SPEECH PATHOLOGY GRADUATE

## Bachelor of Sport and Exercise Science

Fees: \$10,840\* | ATAR: 69.35

### WHAT TO EXPECT

- Make a difference in the lives of individuals and communities. Improve the quality of life for people, help athletes enhance their performance or teach the next generation the importance of nutrition and exercise.
- Participate in research that matters, learning about the processes of human physical activity and contributing to important international research initiatives. Gain practical experience and clinical skills in JCU's world-class training facilities, as well as the JCU Performance Science Hub.
- Understand how to empower others to incorporate exercise as part of an overall wellness plan, and see first-hand how sports can make a difference in marginalised communities.
- The Bachelor of Sport and Exercise Science teaches you the processes and mechanisms underlying physical activity, which allows you to operate in many fields.
- You may also be interested in the Bachelor of Sport and Exercise Science – Bachelor of Psychological Science.

### ★ CAREER OPPORTUNITIES

- Private or community practices
- Occupational health and safety roles
- Health promotion agencies
- Exercise and sport research
- Sport and recreation roles
- Rehabilitation



\* Estimated annual Commonwealth supported fee, plus Student Services and Amenities Fee. Fee deferral and scholarships available if eligible

**LEGEND** JCU Cairns JCU Townsville JCU Mackay JCU Mount Isa JCU Singapore JCU Brisbane Study online Start Semester 1 Start Semester 2 Trimester Intake  
3 Course duration in years Professional experience placements Professional accreditation Field trips



# Veterinary Science

JCU Veterinary Science is a leader in animal science and veterinary practice. Develop specialist skills through hands-on learning in dedicated facilities and unique placements. Make a difference with a Veterinary Science degree.

#1 in Australia

for skills development

Good Universities Guide 2023, UG Vet Science

#1 in Queensland

for student support and teaching quality

Good Universities Guide 2023, UG Vet Science

#1 in Australia

for full-time employment

Good Universities Guide 2023, UG Vet Science

## Bachelor of Veterinary Science (Honours)

Fees: \$10,715\* | ATAR: Special Entry Requirements

- WHAT TO EXPECT
- Make a difference in animal health and welfare with JCU's emphasis on rural and tropical practice. Be equipped with the skills to diagnose, treat and prevent disease in a wide range of companion, production, aquatic and native animals.
  - Learn today how to meet tomorrow's demands in sustainable animal farming and increased expectations for animal health and welfare. You will gain in-depth foundational knowledge throughout your degree, as well as focused rural and tropical veterinary science skills.
  - Take advantage of JCU's real-world teaching settings, including an on-campus Veterinary Centre and Hospital and a local working cattle station for livestock production. In your final two years, you will complete a variety of clinical placements in both rural and urban settings.
  - JCU Veterinary Science graduates can find employment in a range of areas that include veterinary clinics, veterinary hospitals, agriculture, biosecurity, quarantine, public health, zoos and wildlife sanctuaries. Some pursue research in areas such as clinical animal sciences, pharmacology and biomedicine.

★ CAREER OPPORTUNITIES

• Veterinary clinics

• Veterinary hospitals

• Agriculture

• Biosecurity

• Quarantine

• Public health

• Zoos and wildlife sanctuaries



*“I’d heard great things about JCU Veterinary Science’s practical, hands-on approach to teaching and decided that this was something I wanted to explore. The best part of the degree has definitely been all the places it has taken me. The rural focus really pushed me to explore parts of the country that I never would have otherwise travelled to. Providing me with placement opportunities from doing dairy medicine up north in the Atherton Tablelands to scoring rams in Warren NSW, this degree has given me an appreciation of the myriad possibilities there are for vet work in this country.”*

**Aaron Lau**  
BACHELOR OF VETERINARY SCIENCE STUDENT



# 2023 Undergraduate degrees and diplomas

								VET Pathways					
Bachelor Degrees with Majors	Prerequisite subjects	Years	Campus availability and QTAC codes				Intake	ATAR	Completed Certificate III	Completed Certificate IV	Completed AQF Diploma	Fees* (per year)	Page no.
			Cairns	Townsville	Online	Other							
Advanced Science	English, Mathematical Methods Recommended: one of Biology, Chemistry, Physics or Specialist Mathematics	3						92	No	No	No	\$7,200	65
Majors:													
Advanced Molecular and Cell Biology		-	316361	-	-		Feb, July						
Aquaculture Science and Technology		-	316361	-	-		Feb, July						
Chemistry		-	316361	-	-		Feb, July						
Data Science		326361	316361	-	-		Feb, July						
Earth Science		326361	316361	-	-		Feb, July						
Marine Biology		-	316361	-	-		Feb, July						
Mathematics		-	316361	-	-		Feb, July						
Physics		-	316361	-	-		Feb, July						
Zoology and Ecology		326361	316361	-	-		Feb, July						
Arts	English	3						59.4	#	Yes	Yes	\$14,000	34
Majors:													
Anthropology		321031	311031	-	-		Feb, July						
Archaeology		321031	311031	-	-		Feb, July						
Criminology		-	311031	311039	-		Feb, July						
Design and Creative Arts		321031	-	-	-		Feb, July						
English		321031	311031	311039	-		Feb, July						
History		321031	311031	311039	-		Feb, July						
Human Geography		321031	311031	-	-		Feb, July						
Human Services		321031	311031	-	-		Feb, July						
Indigenous Studies		321031	311031	-	-		Feb, July						
Politics and International Relations		321031	311031	311039	-		Feb, July						
Psychology Studies		-	311031	-	SG		Feb, July						
Sociology		321031	311031	311039	-		Feb, July						
Biomedical Sciences	English, Mathematical Methods, Chemistry. Recommended: one of Biology, Health, Physical Education or Physics	3						65.4	#	#	#	\$8,301	38
Majors:													
Microbiology and Immunology		-	316071	-	-		Feb, July						
Molecular and Cell Biology		-	316071	-	-		Feb, July						
Physiology and Pharmacology		-	316071	-	-		Feb, July						
Business	English. Recommended: Mathematical Methods	3						59.4	#	Yes	Yes	\$13,205	40
Majors:													
Business Intelligence and Information Systems		322151	312151	312159	372151 <sup>(BN)</sup> , SG		Feb, May, Sept						
Hospitality and Tourism Management		322151	312151	312159	372151 <sup>(BN)</sup> , SG		Feb, May, Sept						
Human Resources Management		322151	312151	312159	SG		Feb, May, Sept						
International Business		-	-	312159	372151 <sup>(BN)</sup> , SG		Feb, May, Sept						
Management		322151	312151	312159	372151 <sup>(BN)</sup> , SG		Feb, May, Sept						
Marketing for the Digital Age		-	312151	312159	SG		Feb, May, Sept						
Sports and Events Management		-	312151	312159	-		Feb, May, Sept						

Bachelor Degrees with Majors	Prerequisite subjects	Years	Campus availability and QTAC codes				Intake	ATAR	VET Pathways				Fees* (per year)	Page no.
			Cairns	Townsville	Online	Other			Completed Certificate III	Completed Certificate IV	Completed AQF Diploma			
<b>Business and Environmental Science</b>	Assumed knowledge: English, Mathematical Methods	3						63.2	No	No	No	\$12,400	41	
<b>Majors:</b>														
Aquaculture		-		316341	-	SG	Feb, May, Sept							
<b>Commerce</b>	English. Recommended: Mathematical Methods	3						59.4	#	Yes	Yes	\$13,680	41	
<b>Majors:</b>														
Accounting			322021	312021	312029	372021 <sup>(BN)</sup> , SG	Feb, May, Sept							
Banking and Finance		-	-		312029	SG	Feb, May, Sept							
Economics		-		312021	312029	SG	Feb, May, Sept							
Financial Advising		-		312021	312029	-	Feb, May, Sept							
Financial Management		-		312021	312029	SG	Feb, May, Sept							
International Trade		-	-		-	SG	Mar, July, Nov							
<b>Dental Surgery</b>	English, Mathematical Methods, Chemistry. Additional written application <sup>3</sup> . Recommended: Biology	5	327091	-	-	-	Feb	SER	No	No	No	\$10,025	43	
<b>Education (Early Childhood Education)</b>	English, one of General Mathematics, Mathematical Methods or Specialist Mathematics, plus a General Science subject	4	323311	313311	313319	-	Feb, July	70.0	#	#	#	\$4,124	44	
<b>Education (Primary)</b>	English, one of General Mathematics, Mathematical Methods or Specialist Mathematics, plus a General Science subject	4	323211	313211	313219	-	Feb, July	70.0	#	#	#	\$5,070	44	
<b>Education (Secondary)</b>	English, one of General Mathematics, Mathematical Methods or Specialist Mathematics <sup>4</sup>	4	323111	313111	-	-	Feb	70.0	#	#	#	\$7,340	45	
<b>Engineering (Honours)</b>	English, Mathematical Methods	4						75.0	No	No	#	\$7,250	46	
<b>Majors:</b>														
Chemical Engineering		-		314021	-	-	Feb, July						50	
Civil Engineering		-		314021	-	-	Feb, July						50	
Electrical and Electronic Engineering			324021	314021	-	-	Feb, July						50	
Electronic Systems and Internet of Things Engineering			324021	-	-	-	Feb						50	
Mechanical Engineering		-		314021	-	-	Feb, July						50	
<b>Environmental Science and Management</b>	Assumed knowledge: English, Mathematical Methods. Recommended: one of Biology, Chemistry, Earth and Environmental Science, Geography, Marine Science, Specialist Mathematics or Physics	3						63.2	Yes	Yes	Yes	\$9,151	48	
<b>Majors:</b>														
Biodiversity Assessment and Management			326431	316431	-	-	Feb, July							
Environmental Practice			326431	316431	-	-	Feb, July							
Land and Water Management			326431	316431	-	-	Feb, July							
<b>Geology</b>	Assumed knowledge: English. Recommended: one of Biology, Chemistry, Earth and Environmental Science, Geography, Marine Science, Mathematical Methods, Specialist Mathematics or Physics	3	326311 <sup>1</sup>	316311	-	-	Feb, July	66.5	Yes	Yes	Yes	\$7,990	50	
<b>Information Technology</b>	English. Recommended: Mathematical Methods	3	322341	312341	312349	372341 <sup>(BN)</sup> , SG	Feb, May, Sept	63.2	#	Yes	Yes	\$8,301	52	
<b>Laws</b>	English	3	321061	311061	311069	-	Feb, July	75.7	No	No	Yes	\$15,142	54	



Degree and Diploma overview

Bachelor Degrees with Majors	Prerequisite subjects	Years	Campus availability and QTAC codes				Intake	ATAR	VET Pathways				Fees* (per year)	Page no.
			Cairns	Townsville	Online	Other			Completed Certificate III	Completed Certificate IV	Completed AQF Diploma			
Marine Science	Assumed knowledge: English, Mathematical Methods, Chemistry. Recommended: one of Biology, Earth and Environmental Science, Geography, Marine Science, Specialist Mathematics or Physics	3	-	316251	-	-	Feb, July	78.1	No	No	Yes	\$7,130	56	
Medical Laboratory Science (Honours)	English, Mathematical Methods, Chemistry. Recommended: one of Biology, Health, Physical Education or Physics	4	-	316121	-	-	Feb	65.40	#	#	#	\$8,301	39	
Medicine, Surgery	English, Mathematical Methods, Chemistry. Additional written application and interview <sup>3</sup> . Recommended: Biology	6	327012	317012	-	-	Feb	SER	No	No	No	\$11,401	57	
Nursing Science (Pre-registration)	English. Recommended: Biology, Chemistry and one of General Mathematics, Mathematical Methods or Specialist Mathematics	3	326031	316031	316139 <sup>5</sup>	336031 <sup>(BQ)</sup> , 346031 <sup>(MT)</sup>	Feb, July	66.45	#	Yes	Yes	\$5,565	58	
Nursing Science - Midwifery	English. Recommended: Biology, Chemistry and one of General Mathematics, Mathematical Methods or Specialist Mathematics	4	-	317122	-	-	Feb	83.65	No	No	Yes	\$4,980	58	
Occupational Therapy (Honours)	English plus one of Biology, Chemistry, Physics, Health, Psychology or Physical Education	4	-	316101	-	-	Feb, July	72.45	No	#	#	\$7,445	60	
Pharmacy (Honours)	English, Chemistry, Mathematical Methods	4	326151	316151	-	336151 <sup>(BQ)</sup>	Feb	79.3	No	No	No	\$8,301	61	
Physiotherapy	English, Mathematical Methods plus one of Chemistry, Biology, Physics, Physical Education, Psychology or Health	4	-	317031	-	-	Feb	88.9	No	No	No	\$7,540	62	
Planning	English	4	326271	316271	-	-	Feb, July	63.2	#	Yes	Yes	\$10,770	63	
Psychological Science	English	3	-	311081	-	-	Feb, July	69.35	No	Yes	Yes	\$10,540	64	
Science	Assumed knowledge: English, Mathematical Methods. Recommended: one of Biology, Chemistry, Earth and Environmental Science, Geography, Marine Science, Specialist Mathematics or Physics	3						66.5	Yes	Yes	Yes	\$7,775	65	
Majors:														
Aquaculture Science and Technology			-	316061	-	SG	Feb, July							
Chemistry			-	316061	-	-	Feb							
Data Science			326061	316061	-	SG	Feb, July							
Earth Science			326061	316061	-	-	Feb, July							
Internet of Things			-	-	-	SG	Mar, July, Nov							
Marine Biology			-	316061	-	-	Feb, July							
Mathematics			-	316061	-	-	Feb, July							
Molecular and Cell Biology			-	316061	-	-	Feb, July							
Physics			-	316061	-	-	Feb							
Zoology and Ecology			326061	316061	-	-	Feb, July							
Social Work	English	4	321091	311091	311099 <sup>6</sup>		Feb, July	66.5	#	Yes	Yes	\$12,125	68	
Speech Pathology (Honours)	English and one of Biology, Chemistry, Physics, Psychology or Health	4	-	317041	-	-	Feb	75.7	No	No	#	\$8,425	70	
Sport and Exercise Science	English and one of General Mathematics, Mathematical Methods or Specialist Mathematics. Recommended: one of Biology, Chemistry, Physics, Psychology or Physical Education	3	-	316111	-	-	Feb, July	69.35	No	#	#	\$9,780	71	
Veterinary Science (Honours)	English, Mathematical Methods, Chemistry. Additional written application <sup>3</sup> . Recommended: Biology	5	-	317051	-	-	Feb	SER	No	No	No	\$11,401	72	

Degree and Diploma overview

Joint Degrees	Prerequisite subjects	Years	Campus availability and QTAC codes				Intake	ATAR	VET Pathways				Fees* (per year)	Page no.
			Cairns	Townsville	Online	Other			Completed Certificate III	Completed Certificate IV	Completed AQF Diploma			
Arts - Business	English. Recommended: Mathematical Methods	4	321491	311491	311499	-	Feb, May, Sept	59.4	#	Yes	Yes	\$13,340	-	
Arts - Laws	English	5	321521	311521	311529	-	Feb, July	66.5	No	Yes	Yes	\$15,142	-	
Arts - Science	English, Mathematical Methods. For Chemistry or Molecular majors: Chemistry	4	321511	311511	-	-	Feb, July	66.5	#	#	#	\$12,000	-	
Business - Laws	English	5	321531	311531	311539	-	Feb, July	66.5	No	Yes	Yes	\$15,142	-	
Business - Psychological Science	English. Recommended: Mathematical Methods	4	-	311551	-	-	Feb, July	69.4	No	Yes	Yes	\$13,620	-	
Engineering (Honours) - Information Technology	English, Mathematical Methods	5	324071	314071	-	-	Feb, July	75.0	No	No	#	\$7,345	-	
Engineering (Honours) - Science	English, Mathematical Methods. For Chemistry or Molecular majors: Chemistry	5	324051	314051	-	-	Feb, July	75.0	No	No	#	\$7,280	-	
Science - Laws	English, Mathematical Methods. For Chemistry or Molecular majors: Chemistry	5	321541	311541	-	-	Feb, July	66.5	#	#	#	\$12,450	-	
Sport and Exercise Science - Psychological Science	English, one of General Mathematics, Mathematical Methods or Specialist Mathematics. Recommended: one of Biology, Chemistry, Physics, Health, Psychology or Physical Education	5	-	317161	-	-	Feb	69.4	No	#	#	\$10,255	-	

Campus and intake availability for joint degrees depends on the majors chosen. Refer to Bachelor degrees for details.

Diploma	Prerequisite subjects	Years	Campus availability and QTAC codes				Intake	ATAR	VET Pathways				Fees* (per year)	Page no.	
			Cairns	Townsville	Online	Other			Completed Certificate III	Completed Certificate IV	Completed AQF Diploma				
Diploma of Higher Education															26
Majors:															
Business	English. Recommended: Mathematical Methods	1	320011	310011	310019	-	Feb, May, Sept	50	#	Yes	Yes	Yes	\$9,550		
Business Studies	Nil	1	320021	310021	310029	SG	Feb, July	50	Yes	Yes	Yes	Yes	\$9,550		
Dentistry (Indigenous Pathway)	Additional written application <sup>3</sup>	1	320092	-	-	-	Feb, July	SER	-	-	-	-	\$9,550		
Education	Nil	1	320091	310091	310099	-	Feb, July	50	-	-	-	-	\$9,550		
Engineering and Applied Science	Nil	1	320041	310041	-	-	Feb, July	50	-	-	-	-	\$9,550		
General Studies	Nil	1	320001	310001	310009	-	Feb, July	50	-	-	-	-	\$9,550		
Health	Nil	1	320061	310061	-	-	Feb, July	50	-	-	-	-	\$9,550		
Information Technology	Nil	1	320071	310071	310079	SG	Feb, July	50	-	-	-	-	\$9,550		
Psychological Science	Nil	1	-	-	-	SG	Mar, July, Nov	50	-	-	-	-	-		
Science	Nil	1	320031	310031	-	-	Feb, July	50	-	-	-	-	\$9,550		
Social Work	Nil	1	320081	310081	310089 <sup>6</sup>	-	Feb, July	50	-	-	-	-	\$9,550		
Society and Culture	Nil	1	320051	310051	310059	-	Feb, July	50	-	-	-	-	\$9,550		

<sup>1</sup> Only first year subjects are available in Cairns - you must complete your remaining subjects in Townsville.

<sup>2</sup> Only first year subjects are available in Townsville - you must complete your remaining subjects in Cairns.

<sup>3</sup> Additional application due to JCU by 30 September 2022.

<sup>4</sup> Some teaching areas have further subject and industry experience prerequisites. Check the course page on the JCU website for details.

<sup>5</sup> Some compulsory on-campus attendance and clinical placement participation is required.

<sup>6</sup> Online study is only available to students admitted to Townsville or Cairns. Some compulsory on-campus attendance is required. Brisbane students must study on-campus with some compulsory online subjects. Brisbane intakes in Feb, May.

<sup>(BQ)</sup> Brisbane <sup>(MQ)</sup> Mackay <sup>(MT)</sup> Mount Isa

SG = Singapore. International student fees apply. Trimester intakes in Mar, Jul, Nov.

# = Meets rank but not some prerequisites. Please contact the JCU Student Centre for assistance.

\* Estimated annual fee, plus Student Services and Amenities fee.



# Prerequisite subject equivalents

Interstate, International Baccalaureate (IB) and New Zealand

QLD (from 2020)*	QLD (up to and including 2019)*	ACT	NSW	SA/NT	TAS	VIC	WA	IB	NZ
<b>Units 3&amp;4 - Grade C or better</b>	<b>4 semesters at Sound Achievement (SA) or better</b>	50%+ (as percentage grade) in T Majors only*	50%+ (average of examination mark and school assessment)*	D or better (from Publicly Examined Subjects [PES] only)*	Sound Achievement or better (exit level of achievement)*	26+ (study score)*	50%+ (subjects scaled mark)*	HL: 3 or higher SL: 4 or higher*	2.0 (achieved or better at NCEA Level 3)*
<ul style="list-style-type: none"><li>English</li><li>English and Literature Extension</li><li>English as an additional language</li><li>Literature</li><li>Queensland Senior External Examination</li></ul>	<ul style="list-style-type: none"><li>English</li><li>English for ESL Learners</li></ul>	<ul style="list-style-type: none"><li>English</li><li>Language and Literature</li><li>World Literature</li><li>ESL</li></ul>	<ul style="list-style-type: none"><li>English Standard</li><li>English Advanced</li><li>ESL</li><li>English Extension 1</li><li>English Extension 2</li></ul>	<ul style="list-style-type: none"><li>English</li><li>English Studies</li><li>ESL</li><li>English Communication</li><li>English Literary Studies</li><li>English as an Additional Language</li></ul>	<ul style="list-style-type: none"><li>English</li><li>Literature</li><li>Writer’s Workshop</li><li>World Literature</li><li>English Studies</li><li>English Communications</li><li>English Writing</li></ul>	<ul style="list-style-type: none"><li>English</li><li>English (ESL)</li><li>Literature</li><li>English Language</li></ul>	<ul style="list-style-type: none"><li>English</li><li>English (Stage 2 or 3)</li><li>English for ESL Students</li><li>English Literature</li><li>English Course</li><li>English as an Additional Language or Dialect</li></ul>	<ul style="list-style-type: none"><li>English A1 (HL or SL)</li><li>English A2 (HL or SL)</li><li>English B (HL or SL)</li><li>English A: Language and Literature</li><li>English A: Literature</li></ul>	<ul style="list-style-type: none"><li>English</li></ul>
<ul style="list-style-type: none"><li>General Mathematics</li></ul>	<ul style="list-style-type: none"><li>Mathematics A</li></ul>	<ul style="list-style-type: none"><li>Mathematical Applications</li></ul>	<ul style="list-style-type: none"><li>General Mathematics</li><li>Maths in Society</li><li>Maths in Practice</li><li>Mathematics General 2</li></ul>	<ul style="list-style-type: none"><li>Quantitative Methods</li><li>Mathematical Methods (up to 2016)</li><li>General Mathematics</li></ul>	<ul style="list-style-type: none"><li>Mathematics Applied</li><li>Mathematics Applied Senior Secondary 5C</li><li>Mathematical Methods- Foundation</li><li>General Mathematics</li></ul>	<ul style="list-style-type: none"><li>Further Mathematics</li></ul>	<ul style="list-style-type: none"><li>Mathematics 1</li><li>Mathematics IV</li><li>Modelling with Mathematics</li><li>Mathematics Stage 2C/D</li><li>Mathematics Stage 3A/B</li><li>Discrete Mathematics</li><li>Mathematics Applications</li></ul>	<ul style="list-style-type: none"><li>Mathematical Studies (SL)</li></ul>	<ul style="list-style-type: none"><li>Statistics and Modelling</li><li>Statistics</li><li>Mathematics</li></ul>
<ul style="list-style-type: none"><li>Mathematical Methods</li></ul>	<ul style="list-style-type: none"><li>Mathematics B</li></ul>	<ul style="list-style-type: none"><li>Mathematics</li><li>Specialist Mathematics</li><li>Mathematical Methods</li></ul>	<ul style="list-style-type: none"><li>Mathematics 2 unit</li><li>Mathematics (3U to 4U)</li><li>Mathematics Extension 1 and 2</li></ul>	<ul style="list-style-type: none"><li>Mathematical Studies</li><li>Mathematics 1</li><li>Mathematical Methods (from 2017)</li></ul>	<ul style="list-style-type: none"><li>Mathematics Methods Senior Secondary 5C</li><li>Mathematics Methods</li><li>Maths Stage 2 or 3</li><li>Algebra and Geometry</li><li>Analysis and Statistics</li><li>Mathematics</li></ul>	<ul style="list-style-type: none"><li>Mathematical Methods</li></ul>	<ul style="list-style-type: none"><li>Calculus</li><li>Applicable Mathematics</li><li>Mathematics II</li><li>Mathematics Stage 3C/D</li><li>Mathematics Specialist Stage 3A/B</li><li>Mathematical Methods ATAR</li></ul>	<ul style="list-style-type: none"><li>Mathematics (HL or SL)</li><li>Further Mathematics (HL or SL)</li><li>Mathematics Analysis and Approaches (HL or SL)</li><li>Mathematics Applications and Interpretations (HL or SL)</li></ul>	<ul style="list-style-type: none"><li>Mathematics with Calculus</li><li>Calculus</li></ul>
<ul style="list-style-type: none"><li>Specialist Mathematics</li></ul>	<ul style="list-style-type: none"><li>Mathematics C</li></ul>	<ul style="list-style-type: none"><li>Specialist Mathematics</li><li>Mathematics Advanced Extended</li></ul>	<ul style="list-style-type: none"><li>Mathematics (3U to 4U)</li><li>Mathematics Extension 1 and 2</li></ul>	<ul style="list-style-type: none"><li>Specialist Mathematics</li><li>Mathematics 2</li></ul>	<ul style="list-style-type: none"><li>Mathematics Specialist Senior Secondary 5C</li><li>Mathematics Specialised</li><li>Mathematics Stage 2 and 3</li></ul>	<ul style="list-style-type: none"><li>Specialist Mathematics</li></ul>	<ul style="list-style-type: none"><li>Applicable Mathematics</li><li>Mathematics III</li><li>Mathematics Specialist Stage 3C/D</li><li>Mathematics Specialist ATAR</li></ul>	<ul style="list-style-type: none"><li>Mathematics (HL)</li><li>Further Mathematics (HL)</li></ul>	n/a
<ul style="list-style-type: none"><li>Physics</li></ul>	<ul style="list-style-type: none"><li>Physics</li></ul>	<ul style="list-style-type: none"><li>Physics</li><li>Electronics</li></ul>	<ul style="list-style-type: none"><li>Science (3U or 4U)</li><li>Physics (2U)</li><li>Physics</li></ul>	<ul style="list-style-type: none"><li>Physics</li></ul>	<ul style="list-style-type: none"><li>Physics</li><li>Applied Science-Physical Sciences</li><li>Physical Sciences</li></ul>	<ul style="list-style-type: none"><li>Physics</li></ul>	<ul style="list-style-type: none"><li>Physics</li><li>Physical Science</li><li>Physics (Stage 3)</li></ul>	<ul style="list-style-type: none"><li>Physics (HL or SL)</li><li>Physical Science (HL)</li></ul>	<ul style="list-style-type: none"><li>Physics</li></ul>
<ul style="list-style-type: none"><li>Chemistry</li></ul>	<ul style="list-style-type: none"><li>Chemistry</li></ul>	<ul style="list-style-type: none"><li>Chemistry</li></ul>	<ul style="list-style-type: none"><li>Science (3U or 4U)</li><li>Chemistry (2U)</li><li>Chemistry</li></ul>	<ul style="list-style-type: none"><li>Chemistry</li></ul>	<ul style="list-style-type: none"><li>Chemistry</li></ul>	<ul style="list-style-type: none"><li>Chemistry</li></ul>	<ul style="list-style-type: none"><li>Chemistry</li><li>Chemistry (Stage 3)</li></ul>	<ul style="list-style-type: none"><li>Chemistry (HL or SL)</li></ul>	<ul style="list-style-type: none"><li>Chemistry</li></ul>
<ul style="list-style-type: none"><li>Biology or</li><li>Biological Sciences</li></ul>	<ul style="list-style-type: none"><li>Biology or</li><li>Biological Sciences</li></ul>	<ul style="list-style-type: none"><li>Biology</li><li>Human Biology</li><li>Biological Sciences</li></ul>	<ul style="list-style-type: none"><li>Biology (2U)</li><li>Biology</li></ul>	<ul style="list-style-type: none"><li>Biology</li></ul>	<ul style="list-style-type: none"><li>Biology</li></ul>	<ul style="list-style-type: none"><li>Biology</li></ul>	<ul style="list-style-type: none"><li>Biology</li><li>Human Biology</li><li>Biological Sciences</li><li>Human Biological Sciences</li></ul>	<ul style="list-style-type: none"><li>Biology (HL or SL)</li></ul>	<ul style="list-style-type: none"><li>Biology</li></ul>

This table is a guide. Please contact our Student Centre for further information on 1800 246 446

\* Includes external Year 12 subjects

## International Baccalaureate (IB) Diploma

### HOW DO I APPLY TO JCU?

If you are a domestic student who has completed an IB Diploma at a Queensland school, you will need to apply through QTAC.

If you completed an IB Diploma at an Australian school outside of Queensland, your school will provide you with a Learner Unique Identifier (LUI) that will allow you to apply through QTAC. This unique application number is different to your IB candidate number, and the format will be three letters followed by three numbers, e.g. abc123.



# History of JCU

From ground-breaking research and discoveries to milestones in education, JCU is continually growing and forging a brighter future for the Tropics.

## 1950s

### The beginning

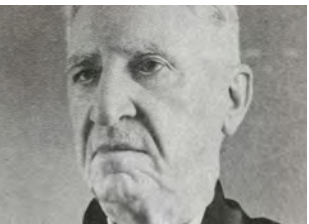
12 October 1958. The Queensland Minister for Education, The Honourable Jack Pizzey, announces the Queensland Government will open a University College in Townsville.



## 1957

### A regional university is proposed

Professor J.D Story, Vice Chancellor of the University of Queensland proposes a regional university college be established.



## 1960s

### A strong foundation

In 1960, the State Cabinet announces that a University College will be established in Townsville. In 1961, the University College of Townsville was officially opened. On 2 March 1964, John Hayes becomes the first student to graduate, receiving a Bachelor of Arts.



## 1966

### Foundation for Australian Literary Studies begins

Professor Colin Roderick establishes the Foundation for Australian Literary Studies, as well as inaugurating a lecture series and an annual book award. The Colin Roderick Award is valued at \$20,000 and recognises the best Australian book of the year that deals with any aspect of Australian life.



## 1970s

### A royal visit and the first JCU graduates

Queen Elizabeth II officiated the establishment of JCU on 20 April 1970. Following the passing of the James Cook University of North Queensland Bill 1969. The first cohort to fully study at JCU graduates in 1973.



# Celebrating 50 years

## 1977

### Cyclone Testing Station established

The Station aims to minimise the loss and suffering caused by cyclones and other high wind events, as well as providing advice to governments, manufacturers, and property owners. The Station is founded in response to the destruction caused by Cyclone Althea to Townsville in 1971 and Cyclone Tracy to Darwin in 1974.



## 1980s

### Moving north and Queen's Birthday Honours

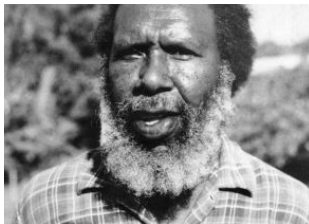
JCU Cairns opens its doors and the University celebrates 25 years in Townsville. Vice-Chancellor Professor Ken Back is made an Officer of the General Division of the Order of Australia in the Queen's Birthday Honours list in 1984.



## 1981

### Land rights challenge

The politically active JCU Student Union organises the *Land Rights and the Future of Australian Race Relations Conference* at the Douglas campus, putting future events in motion. After speaking at the conference, Eddie Koiki Mabo leads a group of Mer Islanders in taking their case to court; they will go on to challenge Crown ownership of Mer.



## 1990s

### The Mabo Legacy and broadening educational horizons

In 1992, Eddie Koiki Mabo passes away just months before the Mabo v Queensland case is decided. The High Court's historic decision overturned the legal doctrine of *terra nullius*. In 1992, JCU Mackay opens. In 1995 JCU Cairns relocates to its current Smithfield site. In 1997, JCU Mount Isa is established as a centre for population health, education and research.



## 1990

### First cohort of nurses

JCU accepts its first cohort of nurses. The Department of Nursing was the University's first undergraduate health science department and the first university school of nursing in the Tropics in Australia. In 1991 JCU constructed a dedicated Nursing Science building.





Visit [jcu.edu.au/timeline](https://jcu.edu.au/timeline) to explore more events in JCU's rich history.

## 2000s

### Growth and opportunity

JCU opens a Medical School in 2000, commences operations in Singapore in 2003, and is named in the top 500 Universities in the World in the Shanghai Jiao Tong world ranking.



## 2008

### JCU Library named after Eddie Koiki Mabo

JCU launches its Reconciliation Statement and names the Townsville campus library the "Eddie Koiki Mabo Library" in recognition of the significant contribution he made for Australian Aboriginal and Torres Strait Islander Land Rights.



## 2010s

### Reconciliation in action

A May 2013 commitment by the JCU Vice Chancellor led to the development of the first Reconciliation Action Plan. The Indigenous Education and Research Centre launches.



## 2012

### 20th anniversary of the historic Mabo Decision

JCU commemorates the 20th anniversary of the historic Mabo Decision with a series of events including a public lecture titled **Mabo - 20 Years on. Did it change the Nation?** The lecture was presented by Professor Henry Reynolds who, along with fellow-academic Noel Loos, built a relationship with Dr Mabo at JCU Townsville in the 1970s.



## 2014

### First State of the Tropics report

State of the Tropics is a global alliance of institutions working towards a brighter future for the Tropics. After discussions beginning in 2011, the first State of the Tropics report is released in 2014. In 2016, the United Nations General Assembly declares 29 June of each year be observed as the International Day of the Tropics.

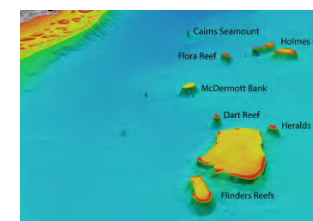


# Celebrating 50 years

## 2015

### 3D satellite mapping of reefs

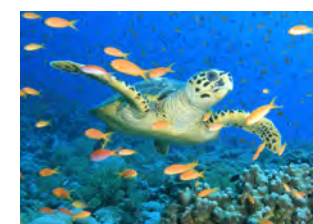
JCU researchers in Cairns complete detailed 3D depth maps of Australia's Coral Sea reefs, shedding new light on the likely distribution of coral diversity and sea life in the area. Dr Robin Beaman said mapping the reefs and their underwater landscape had always been a challenge, because their remote locations and shallow nature made it difficult to use modern surveying techniques.



## 2017

### JCU recognised as No. 1

JCU is recognised as number one in the world for Marine and Freshwater Biology and number two in the world for Biodiversity Conservation by the Center for World University Rankings (CWUR).



### An Australian first at JCU

JCU launches Australia's first Internet of Things degree in 2016, and in 2017 opens Australia's first NarrowBand Internet of Things (NB-IoT) research lab in Cairns. "The Internet of Things is based on something that is central to our mission in the Tropics: building a greater connectivity between people, place, and technology," JCU Vice Chancellor Professor Sandra Harding said.



## 2020s

### A celebration

For over fifty years, JCU graduates have helped shape the future in classrooms, in hospital wards, and throughout communities, both in Australia and internationally. After being postponed for a year due to COVID-19, graduation ceremonies proceeded in both Cairns and Townsville.



## 2021

### Eddie Koiki Mabo awarded Honorary Doctorate

The late Eddie Koiki Mabo is awarded an Honorary Doctorate in recognition of his outstanding service and distinguished public campaign to improve the rights and wellbeing of his people. Chancellor Bill Tweddell is pictured with Dr Mabo's daughter, Gail, who accepts the doctorate on behalf of her late father.





# Research excellence

A defining feature of JCU is its research excellence in disciplines of particular relevance to the Tropics.

Excellence in Research for Australia (ERA) rated JCU's research in 83 per cent of fields as world-class or above, including every field of research in medical and health sciences at JCU<sup>1</sup>.

JCU received the highest possible rating, well above world standard, in eight research areas:

- Environmental science and management
- Ecology
- Geology
- Ecological applications
- Plant biology
- Medical microbiology
- Fisheries sciences
- Organic chemistry

This now makes JCU the only Australian university to be recognised by ERA at the highest level in every assessment within the environmental science and management research category since 2010.

Our research contributions that make a difference to tropical environments and societies have also earned JCU recognition as the number one university in the world for Marine and Freshwater Biology and number two in the world for Biodiversity Conservation<sup>2</sup>.

## JCU Cairns

- Advanced Analytical Centre
- Australian Institute of Tropical Health and Medicine
- Australian Tropical Herbarium
- Cairns Institute
- Centre for Molecular Therapeutics
- Centre for Tropical Bioinformatics and Molecular Biology
- Centre for Tropical Environmental and Sustainability Science
- Indigenous Education and Research Centre
- JCU Ideas Lab
- Language and Culture Research Centre
- World Health Organisation Collaborating Centre for Nursing and Midwifery Education and Research Capacity Building

## JCU Singapore

- Centre for International Trade and Business in Asia
- Tropical Futures Institute

## JCU Townsville

- Agriculture Technology and Adoption Centre
- AIMS@JCU
- Anton Breinl Research Centre for Health System Strengthening
- Australian Institute of Tropical Health and Medicine Boating and Diving
- Australian Research Council Centre of Excellence for Coral Reef Studies
- Australian Research Council Industrial Transformation Research Hub for Advanced Prawn Breeding
- Centre for Disaster Studies
- Centre for Nursing and Midwifery Research
- Centre for Sustainable Tropical Fisheries and Aquaculture
- Centre for Tropical Water and Aquatic Ecosystem Research
- Comparative Genomics Centre
- Cooperative Research Centre for Developing Northern Australia
- Cyclone Testing Station
- Economic Geology Research Centre
- eResearch Centre
- Indigenous Education and Research Centre
- Marine and Aquaculture Research Facility
- Queensland Research Centre for Peripheral Vascular Disease
- World Health Organisation Collaborating Centre for Vector-borne and Neglected Tropical Diseases



JCU Singapore

Daintree Rainforest Observatory  
Orpheus Island Research Station  
JCU Cairns  
JCU Townsville  
Centre for Rural and Remote Health Mount Isa  
Fletcherview Research Station  
JCU Brisbane



# Daintree Rainforest Observatory

The Daintree Rainforest Observatory is located in lowland tropical rainforest at Cape Tribulation, around 3 hours' drive north of Cairns. It is a unique part of the world, where two World Heritage areas meet.



At the Daintree Rainforest Observatory, JCU monitors one hectare of rainforest to gather data for research use with automated sensors and a wireless data network.

Measurement facilities in the survey area include dendrometers, sap flow meters, soil moisture pits, leaf litter traps, weather stations and cameras.

It is the only field station in Australia operating a rainforest canopy crane, and is one of only five long-term ecological monitoring sites in Australia.

JCU's canopy crane makes it possible to view the rainforest from above the canopy, through its different levels, and down to the soils and subterranean water resources.

The observatory offers accommodation, one open-air teaching laboratory and one standard air-conditioned laboratory.



[jcu.edu.au/daintree](http://jcu.edu.au/daintree)

# Fletcherview Research Station

Fletcherview Research Station is a massive 1,960 hectare working cattle station, around 2 hours' drive southwest of Townsville in a major cattle producing area.



Students and researchers in tropical agriculture and veterinary science have access to industry-standard livestock handling facilities at Fletcherview, for studies in areas like animal reproduction, nutrition and pasture monitoring.

The station's size and diversity of land types, plant and animal species also attracts researchers in animal immunology, biology, botany, geology, and tropical agriculture.



[jcu.edu.au/fletcherview](http://jcu.edu.au/fletcherview)



# Orpheus Island Research Station

The Orpheus Island Research Station offers easy access to the Great Barrier Reef's inshore reefs and islands. A known 1,100 species of fish and 340 of the 350 known species of reef coral can be found in the underwater gardens of the surrounding reefs.



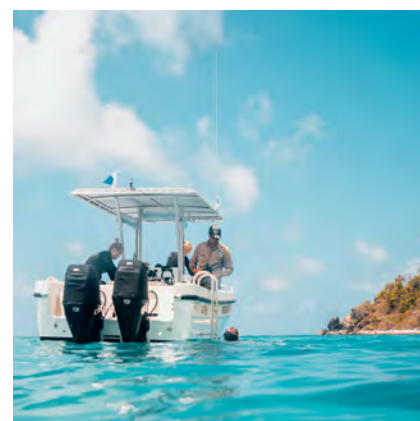
Orpheus Island comprises 1,368 hectares of dry woodlands, scattered rainforest gullies, grasslands, granite outcrops, beaches and bays.

Exploring the waters around the island reveals a number of historic shipwreck sites and marine habitats including fringing and mid-shelf reefs.

At Pioneer Bay on the western side of the island, JCU's teaching facilities include a lecture theatre with multimedia capabilities, wireless internet, laboratory and testing equipment, a reference library and a huge coral reef display tank.

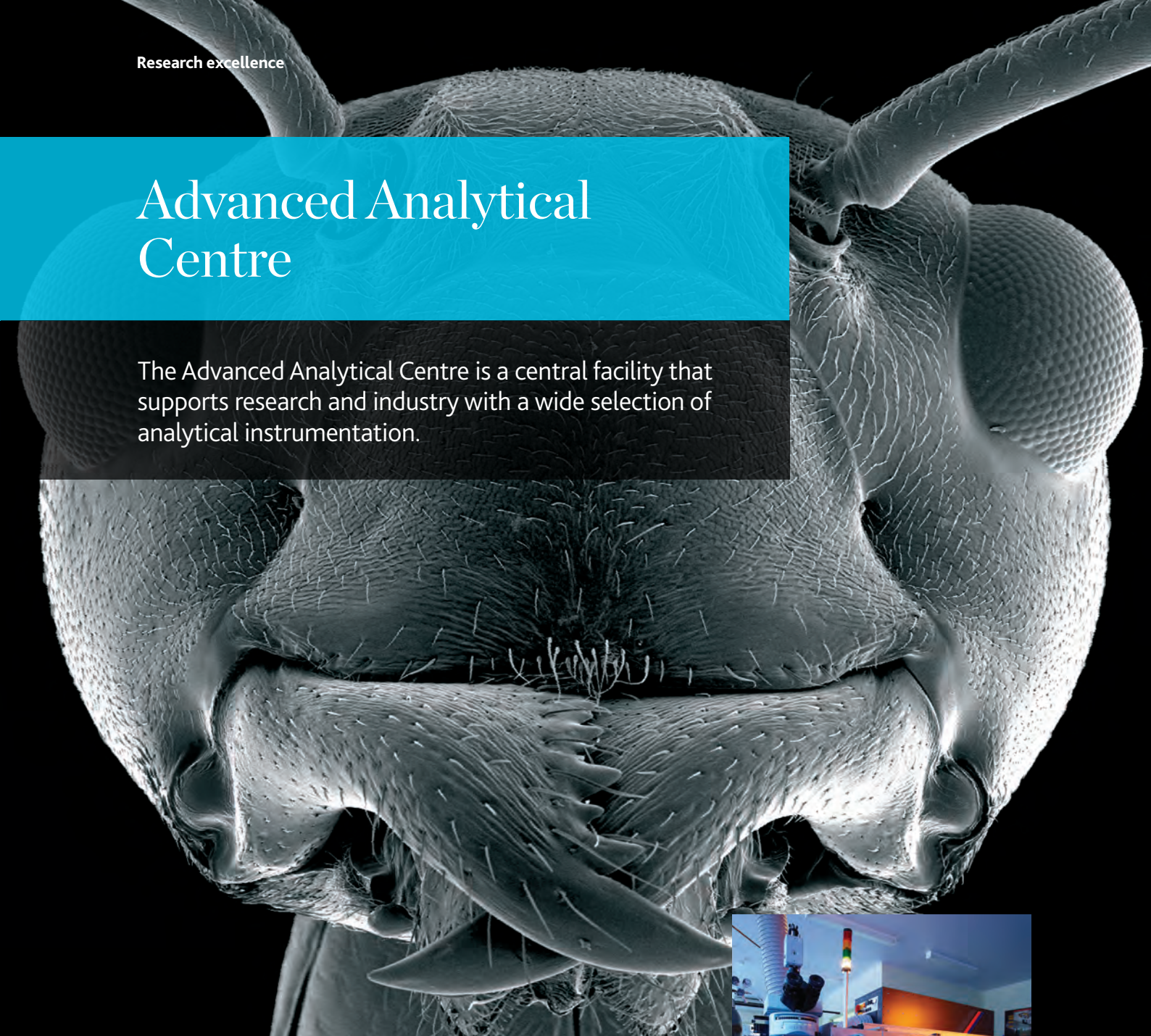
Scientific resources include climate-controlled research rooms, wet laboratories, a versatile saltwater aquarium system, and six aquarium raceways.

Students regularly visit Orpheus Island to study the diverse fauna, particularly on the sand and rubble intertidal reef flat, as well as investigating fauna associated with the mangrove community.



# Advanced Analytical Centre

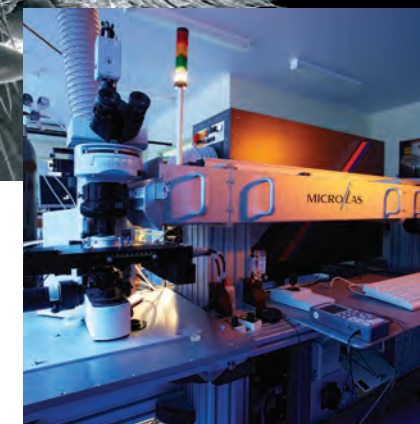
The Advanced Analytical Centre is a central facility that supports research and industry with a wide selection of analytical instrumentation.



The centre provides access to specialised instruments and techniques used in microscopy and microanalysis, inorganic and organic chemical analysis, mineralogy/crystallography and genetic analysis.

It is supported by highly experienced staff and has projects ranging from the analysis of the oldest rocks on Earth to corrosion of medical implants, and from reef ecosystems to archaeological artefacts.

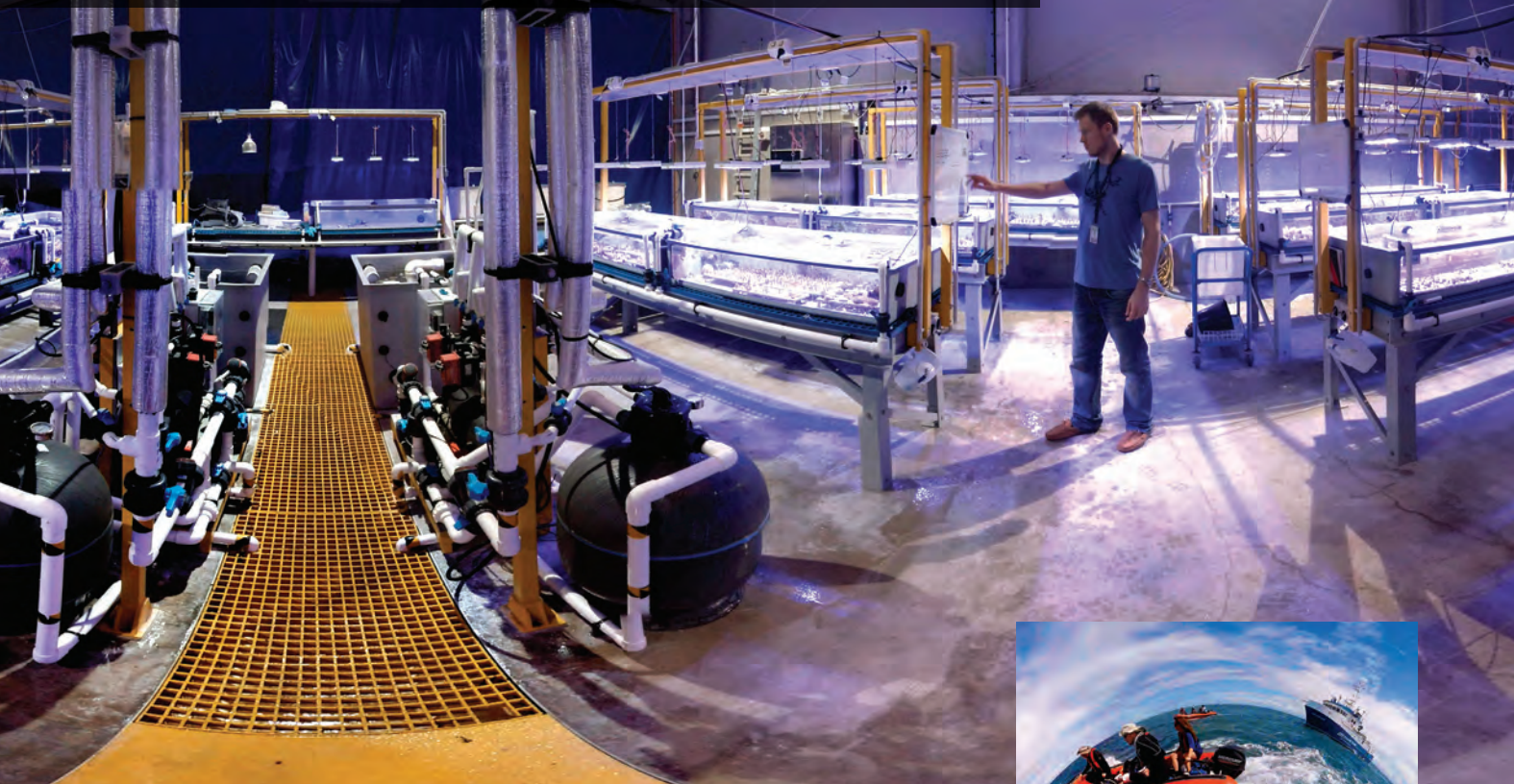
It also offers services from sample preparation through to final analysis and reporting, plus expert training in instrument use.





# AIMS@JCU

AIMS@JCU is a strategic alliance between JCU and the Australian Institute of Marine Science (AIMS). It integrates strengths, synergies, infrastructure, and expertise in world-class tropical marine research capacity.



AIMS is the Australian Government's tropical marine research agency. AIMS@JCU is strategically focused on the AIMS research plan, which addresses national and international research priorities and skills gaps, to advance the global knowledge required to understand and sustainably manage marine resources.

AIMS@JCU informs government policy and improves the global knowledge and tools required to understand and sustainably manage marine resources. It also makes a significant contribution to training the next generation of marine science leaders equipped with expertise of most relevance to meet real-world challenges.

*Global coral bleaching event – AIMS RV Cape Ferguson at Coates Reef conducting coral bleaching surveys. Six cameras mounted on a pole were recording at the same time to capture the scene.*

[aims.jcu.edu.au](https://aims.jcu.edu.au)



# ARC Centre of Excellence for Coral Reef Studies

The ARC Centre of Excellence for Coral Reef Studies is the world leader in integrated research for sustainable use and management of coral reefs.



It brings together the world's largest collective of coral reef scientists, helping to strengthen collaborative links between major partners and with 24 other leading institutions in nine countries.

The centre is a partnership of JCU, the Australian Institute of Marine Science, The Australian National University, the Great Barrier Reef Marine Park Authority, The University of Queensland, and The University of Western Australia.

*Professor Joshua Cinner, Chief Investigator, ARC Centre of Excellence for Coral Reef Studies and winner of the 2017 Elinor Ostrom Award, interviews PNG fishermen about adapting to changing social and environmental conditions.*

<https://www.coralcoe.org.au/>





# Australian Institute of Tropical Health and Medicine

The Australian Institute of Tropical Health and Medicine (AITHM) is a significant tropical health and medical research institute based at JCU.

AITHM is focused on Australia's health security and improving the efficacy of healthcare delivery and health outcomes for the communities of northern Australia and neighbouring tropical nations.

It aims to address the gaps that exist between research and scientific expertise, health policy and implementation.

AITHM contributes to the growth and development of the North Queensland economy through new commercial ventures including industry development in pharmaceutical formulation, manufacturing and biotechnology.

In Australia, JCU's partnerships through AITHM include the Tropical Australian Academic Health Centre and Northern Queensland Primary Health Network.

[aithm.jcu.edu.au](http://aithm.jcu.edu.au)

# The Cairns Institute

The Cairns Institute brings together the expertise and intellectual resources of more than 20 disciplines in humanities and social sciences, creating a vibrant hub for research, capacity building and public debate, relevant to tropical societies.

The Cairns Institute is committed to understanding and informing critical processes of social and environmental transformation. Its location in tropical North Queensland and proximity to neighbouring countries in the Pacific and Southeast Asia offers unique opportunities to enhance human life in the tropics and contribute to a brighter, more equitable, and enriching future for its peoples.

The institute's work is organised around five themes:

- Creative Ecologies
- Cultural Transformations
- Indigenous Futures
- Social and Environmental Justice
- Sustainable Development.

[cairnsinstitute.jcu.edu.au](http://cairnsinstitute.jcu.edu.au)





# eResearch Centre

The eResearch Centre brings IT professionals and the community together to harness the power of technology and advance knowledge of the Tropics.

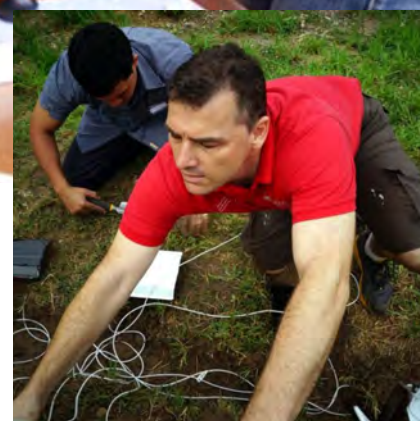


The eResearch Centre supports data-intensive research projects featuring big data analytics, precision agriculture, conservation management, and environmental and urban technology applications.

Its outreach programs promote the use of advanced IT infrastructure, bringing eResearch to schools, communities and governments through local projects, workshops and seminars.

The centre also provides computing, access and information support for projects and can develop tailored technology solutions to help address specific research challenges.

[eresearch.jcu.edu.au](http://eresearch.jcu.edu.au)



# JCU Ideas Lab

The JCU Ideas Lab is a research and development hub that provides practical pathways for students, researchers and the broader community to develop as innovators and entrepreneurs.



The lab houses facilities to create, prototype, test, develop and scale innovative technologies, products and business concepts.

Less formally, the JCU Ideas Lab can help guide entrepreneurs and researchers with interesting solutions to address gaps in critical industries where they can make a significant impact.

The aim is to help develop high-potential ventures or technologies with real commercial application that can drive economic growth and diversity for northern Australia.



[jcu.edu.au/ideasl原因](http://jcu.edu.au/ideasl原因)



# Marine and Aquaculture Research Facility

The Marine and Aquaculture Research Facility is JCU's central facility for research and testing in aquaculture, marine biology and algal studies.

At any one time, the facility supports a diverse portfolio of research projects on various species of fin fish, coral, algae, crustaceans, squid, holothurians, molluscs and bivalves.

It features eight large recirculating marine water systems supplying outdoor, undercover and indoor lab areas as well as 21 indoor temperature-controlled research labs, 11 of which have their own dedicated recirculating life support systems for high-resolution or specifically modified research projects.



## Apply to JCU



Email us at:  
[enquiries@jcu.edu.au](mailto:enquiries@jcu.edu.au)



Apply online:  
[jcu.edu.au/apply](http://jcu.edu.au/apply)

JCU Student Centre is your number one point of contact. JCU advisors will provide advice on courses and careers, subjects, fees, support services and scholarships.

Freecall (within Australia): 1800 246 446  
Email: [enquiries@jcu.edu.au](mailto:enquiries@jcu.edu.au)

Stay social # jculife



© James Cook University, Marketing, 2023

Print: Printcraft

Photography: 123RF, Andrew Rankin, Brad Newton, Mat Currie, iStockphoto, Kerry Trapnell, NASA, Orpheus Island Resort, Paul Dymond, Luka Kauzlaric, Nicki Zieth, Shutterstock, Steven Nowakowski, Steve Rutherford, Through the Looking Glass Photography, Tourism Queensland, Amber Hill, Kate Hutson

This publication is intended as a general guide for domestic students only. Prospective domestic students and all international applicants should contact the University to confirm admission requirements and the availability of courses.

Information is correct at the time of printing.

James Cook University reserves the right to alter any course or admission requirement without prior notice. Check for updates at [jcu.edu.au](http://jcu.edu.au)

James Cook University CRICOS Provider code 00117J.

Cover: Monza Satin Recycled Art, FSC Mix 250gsm



Inner pages: Pacesetter Satin, FSC Mix 90gsm



Ready today  
for tomorrow



[jcu.edu.au](http://jcu.edu.au)



JAMES COOK  
UNIVERSITY  
AUSTRALIA