

# Doceri Connection Guide

[Download this document in .pdf format](#)

## What is Doceri

Doceri is an iPad interactive annotator and whiteboard with screencast recorder and built in Wireless Remote Desktop Control. In practical terms this means you will be able to control the desktop PC from your iPad with the added ability to annotate and record your session. Doceri is available from Semester 1, 2013 on all Desktop PCs (GATCF computers) in JCU common teaching rooms.

## Prerequisites

First of all you need to download and install Doceri from the Apples app store on your iPad. To connect and use Doceri your iPad must be connected to JCU's [Eduroam wireless](#) facility (click on the link for instructions on how to connect to Eduroam).

### A. Set up Desktop PC (1-5)

1. Login to the desktop PC using your JCU username and password.
2. Search for Doceri in the programs menu from the Start Menu and launch it. Accept the software licence agreement to continue.
3. Your username will be shown.
4. Enter a new password for Doceri e.g. 1234, confirm it and click OK.



5. The following screen is shown on the desktop PC.



The desktop PC's IP address is shown below the computer name. The black and white pattern to the right is the QR code. Click the "Need help connecting" for some helpful hints.

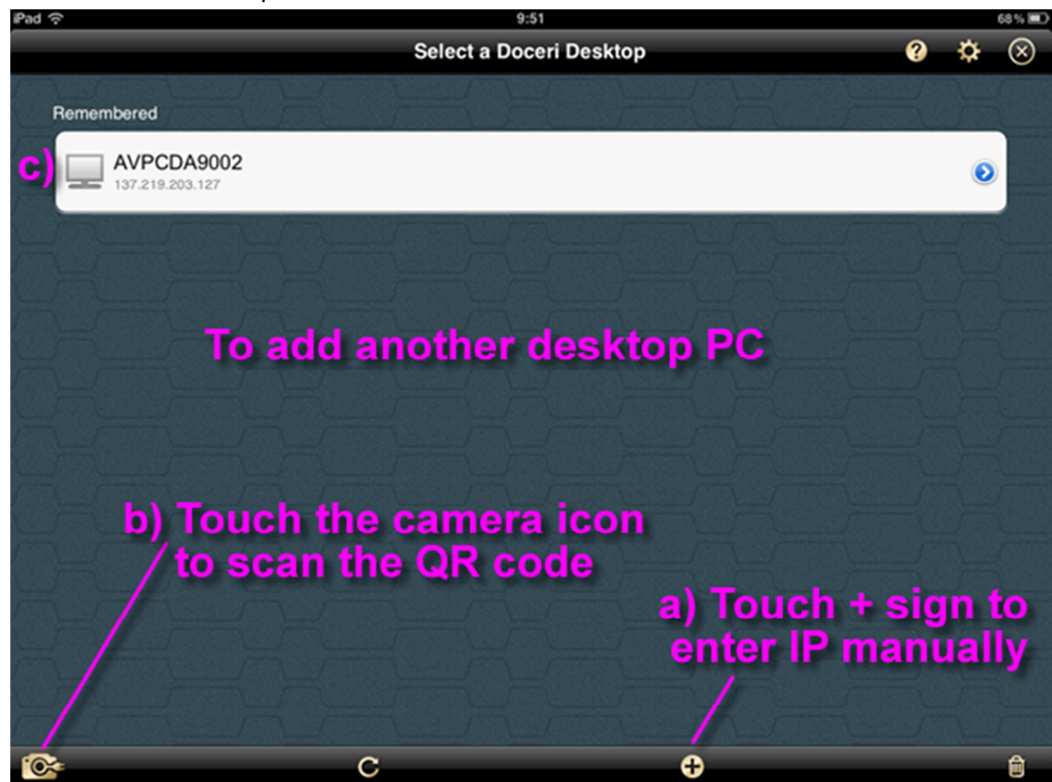
## B. Set up iPad (1-3)

1. After connecting to Eduroam fire up the Doceri app on your iPad.

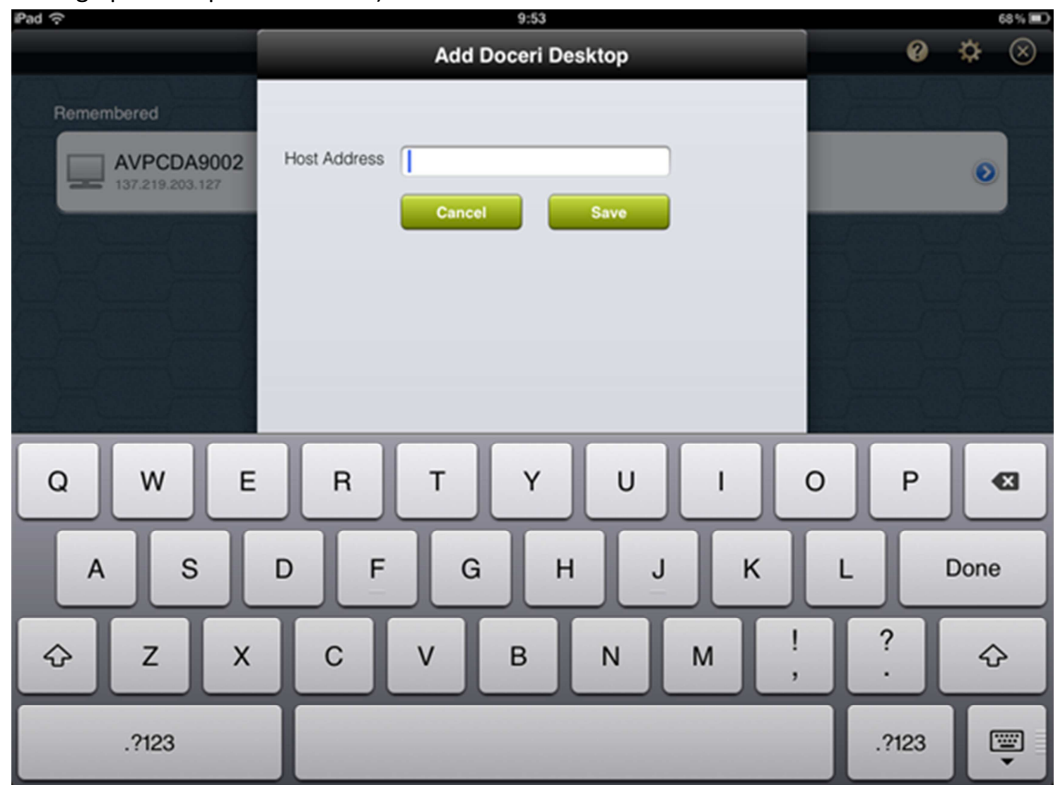
2. Choose “through a computer” from the two of options.



3. Select a Dockeri Desktop

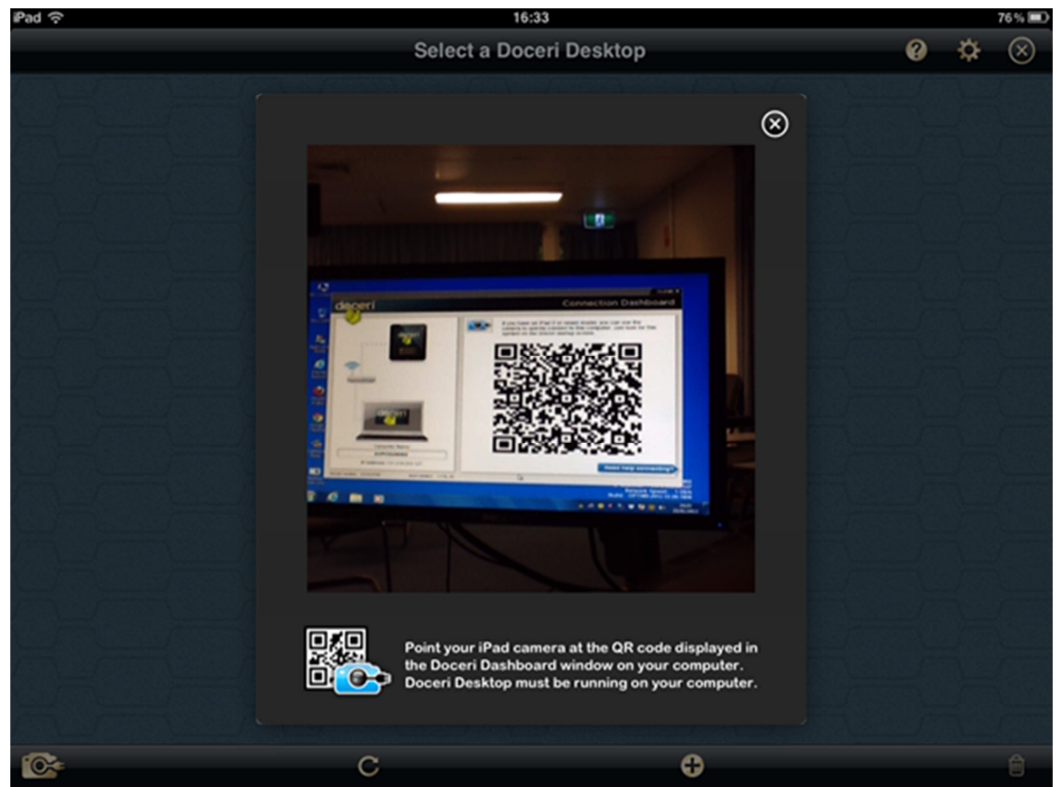


- a. Touch the + sign and type in the IP Address of the desktop PC (the address can be found on the desktop PC screen) e.g. 137.219.xxx.xxx and press save –you will be asked to enter the password (the same as you used when setting up Desktop PC for Doceri).

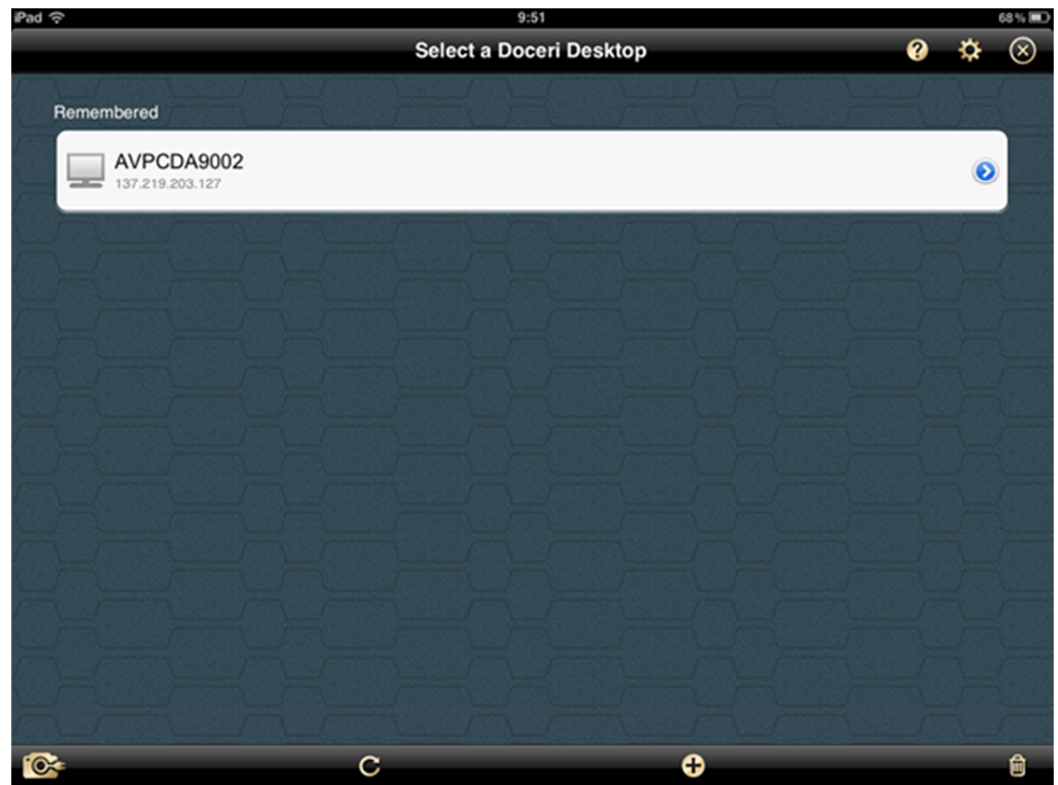


- b. Touch the camera icon located on the bottom left hand corner of the iPad to scan the QR code on the desktop PC – after a successful scan you will be asked to enter the password (the same as you used when setting up the Desktop PC for Doceri).



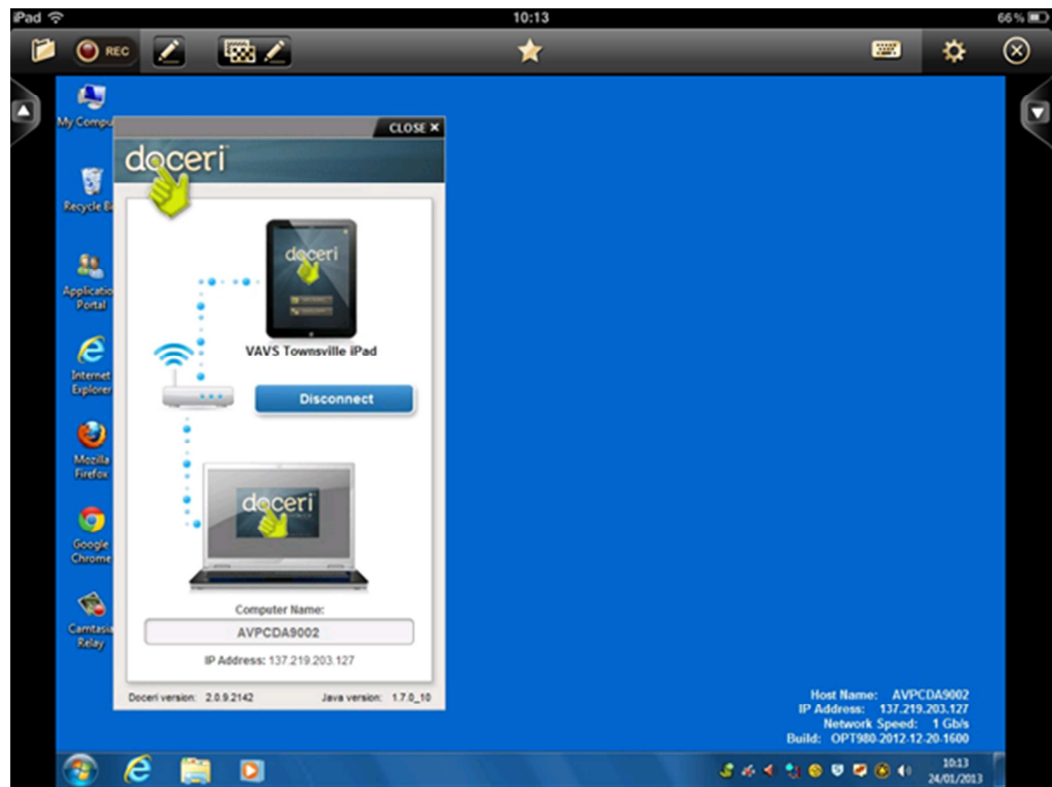


- c. Press the remembered desktop PC if there is one. This will only work if that particular computer has the same IP address and is set up on the Desktop PC by the same username and password combination as last time.

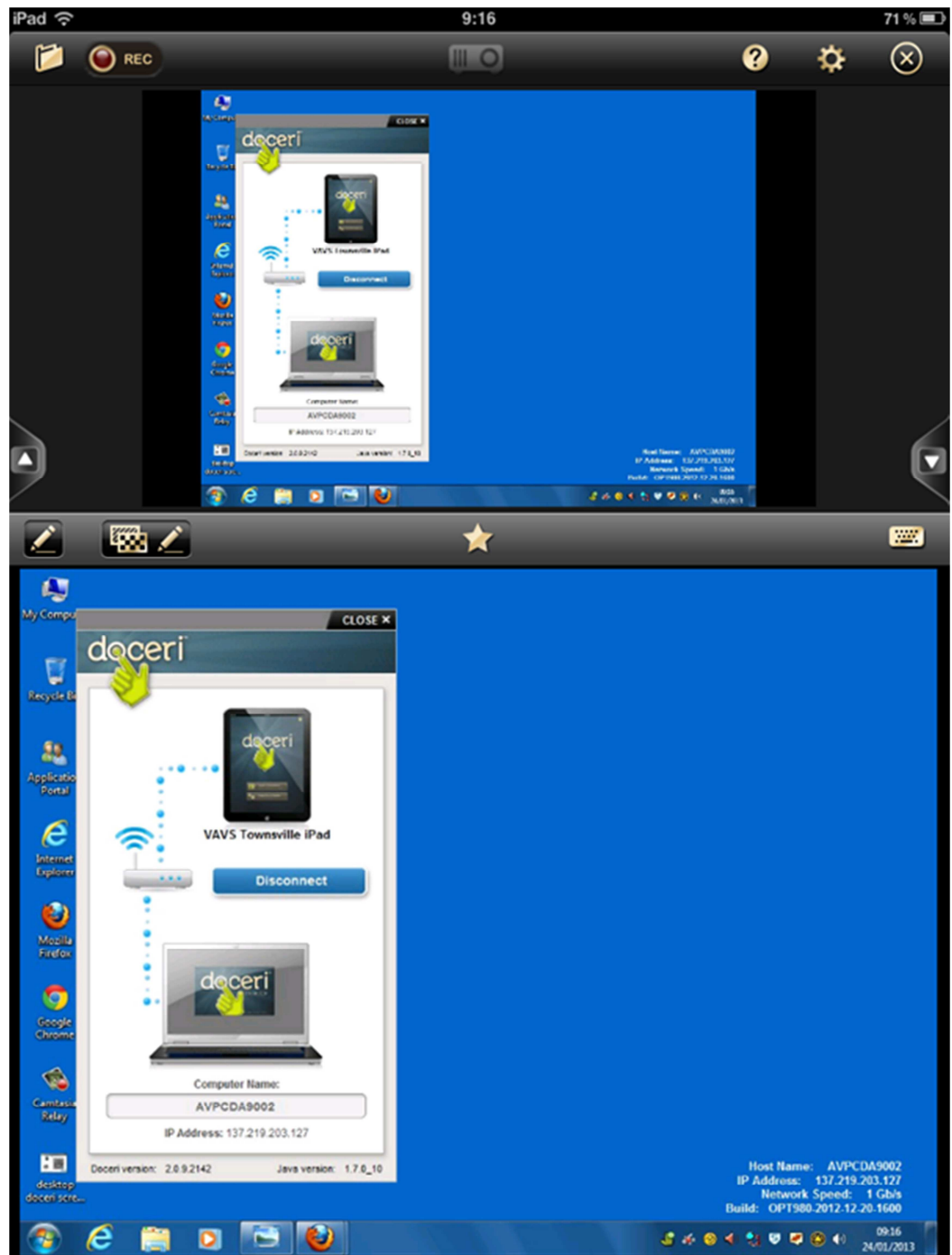


### C. Successful connection of the desktop PC and the iPad (1-2)

1. When the iPad is connected to the desktop PC the following screen (depending on how the iPad is orientated) will pop up:



Horizontal (above) or vertical (below).



2. Explore the possibilities that Doceri has to offer!

For more information on how to get the best out of Doceri please click on [Doceri website](#) .