

SEMINAR: Intrusion-related mineral systems and exploration in north-east Queensland

TIME	PROGRAM	PRESENTER
08:45	Registration	
09:00	Welcome	Zhaoshan Chang
9:05	Intrusion-related mineral systems of north-east Queensland - a project and seminar overview	Vladimir Lisitsin
9:20	Magma fertility - concepts and comparison of the magmatic rocks associated with Sn-W mineralisation in the Herberton district and Au-Cu mineralisation in northern Bowen Basin	Zhaoshan Chang Carl Spandler
9:40	Magma fertility related to Sn-W mineralisation in the Herberton district	Yanbo Cheng
10:05	Magma fertility related to Au-Cu mineralisation in northern Bowen Basin	Isaac Corral, Helge Behnsen
10:25		Morning tea
10:50	Updated geology of the Charters Towers Province	Simon Beams
11:15	Metallogeny of the Charters Towers Province	Gregg Morrison
11:35	A new genetic model for the Ravenswood District	Gregg Morrison, Alexei Nicholls
11:55	Gold deposits of the Lolworth District	Nick Tate
12:15		Lunch
13:05	Mt Carlton high-sulphidation Au-Ag-Cu deposit	Fredrik Sahlstrom
13:25	Mt Carlton structural geology	Paul Dirks
13:35	Regional mineralisation of the northern Bowen Basin	Isaac Corral
13:50	Geology of the Watershed W deposit	Jaime Poblete
14:05	Mt Carbine W deposit and regional W-Sn mineralisation in the Herberton - Watershed district	Yanbo Cheng
14:25		Afternoon tea
14:50	District to camp scale geochemical signatures and zoning of intrusion-related mineral systems	Simon Beams, Gregg Morrison
15:10	Geophysical signatures of intrusion-related mineral systems in the Charters Towers region	Terry Hoshke
15:30	Mineral prospectivity analysis of north-east Queensland - approach and progress	Arianne Ford, John Carranza
15:50	General discussion	

Date:
Wednesday,
27 May 2015

Venue:
Endeavour Room
University Hall -
Administration
(Building 112,
first floor)
James Cook Drive
James Cook University
Townsville

Cost:
Free
(registration required)

Registration:
egr@jcu.edu.au

Information:
www.jcu.edu.au/egr

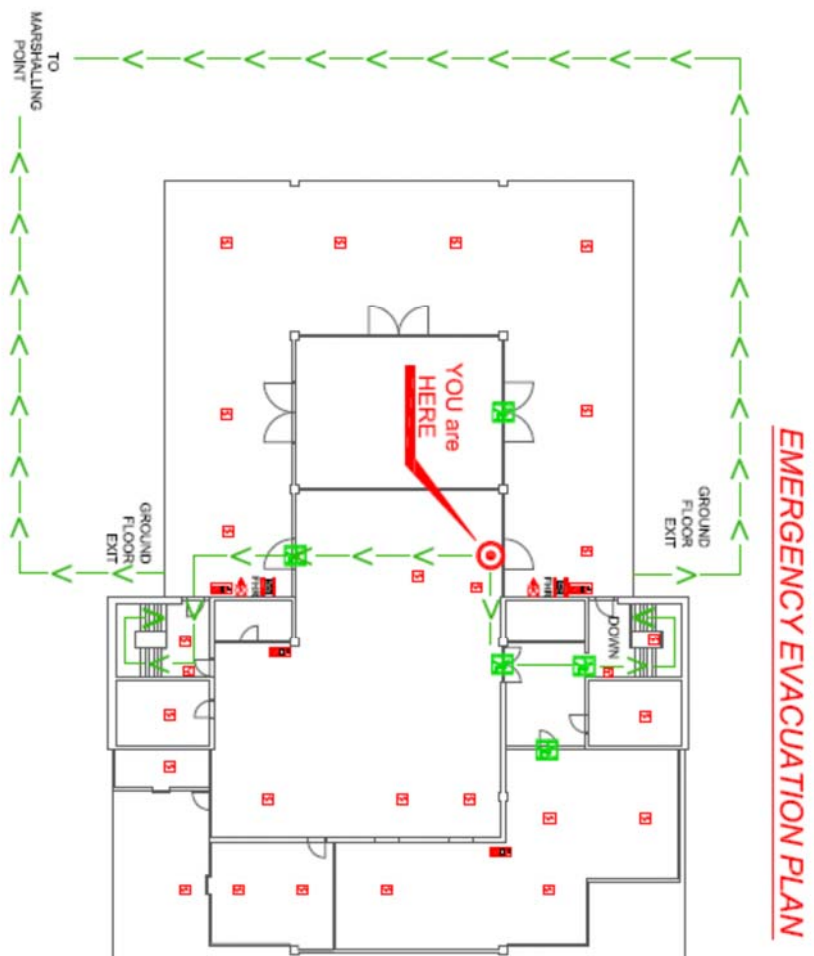
Characterising and assessing prospectivity of intrusion-related hydrothermal mineral systems in north-east Queensland

Welcome!

27 May 2015

Townsville, Queensland, Australia

House keeping



Thanks to DNRM / GSQ

- **Few major discoveries in the past ~20 years**
- **Exploration expenditure more than halved from 2011 to 2014 (\$254 million to \$114 million; ABS, 2014)**

Thanks to industry supporters

- **Evolution Mining: \$150,000 cash contribution**
- **Vital Metals, Carbine Tungsten, Wolfram Camp Mine, Monto Minerals / Snow Peak Mining, Mega U, Glencore Coal, Herberton Museum, Denjim, Towers Holdings, Resolute, Mantle Mining, Picadilly GM, Wishbone Gold, Ramelius, Liontown Resources,**
- **QEC**
- **Roger Taylor, Phil Blevin, Dave Champion, Bob Bultitude, Gavin Clarke, Greg Clapin, ...**

Thanks to the team members

