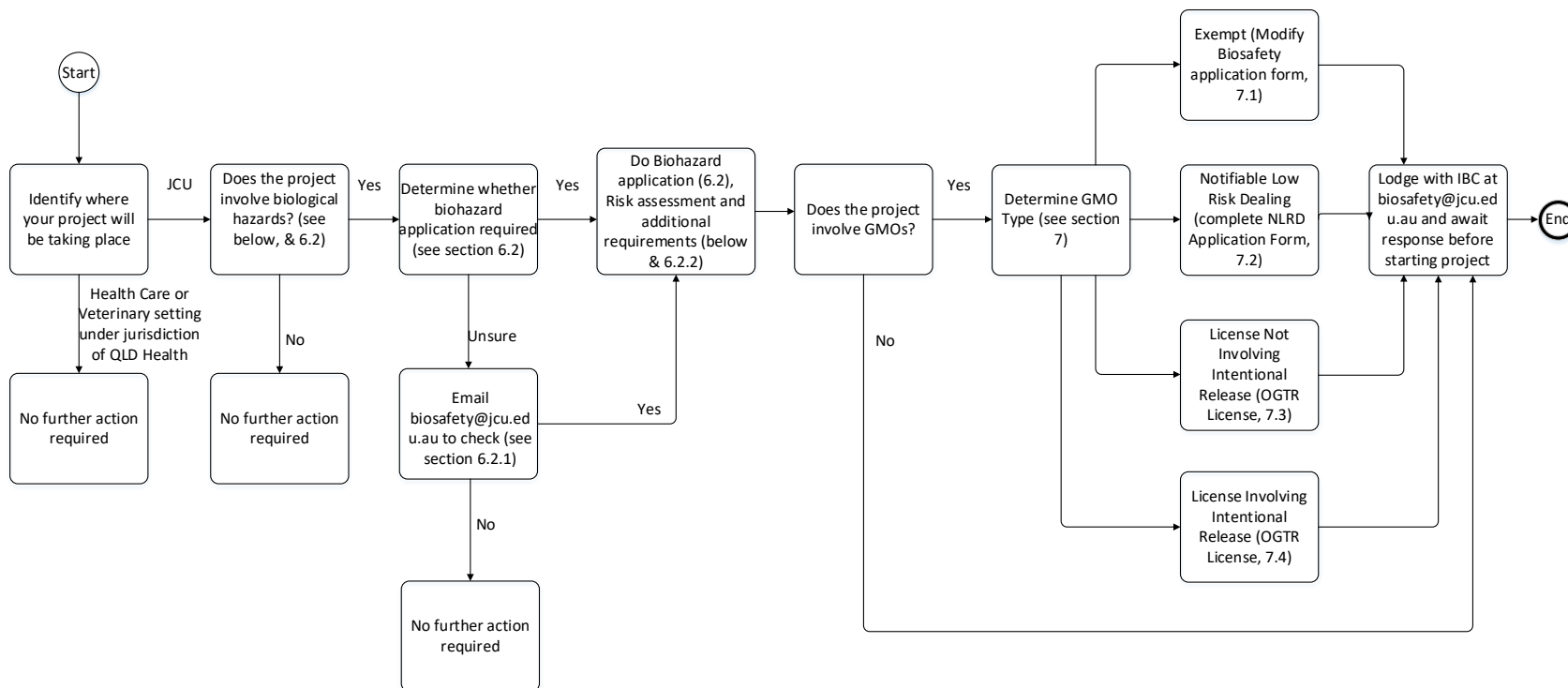


# WHS-PRO-009 Biosafety Procedure

## Appendix 1: Overview of Obtaining Approval to Work with Biological Hazards at JCU



### Biological Hazards Include:

- Genetically modified microorganisms, animals, plants and gene knock-outs
- Materials derived from human source including collecting blood, interviewing at risk populations
- Materials derived from animal sources, in particular those with potential for causing zoonotic infection and horses, bats and animals from overseas
- Purposely infecting animals.
- Working with poisonous or venomous organisms.
- Synthetic toxins/biologicals.
- Working with microorganisms.

### Additional requirements include:

- Human Ethics (<https://www.jcu.edu.au/research-services/ethics-and-integrity/human-ethics>)
- Animal Ethics (<https://www.jcu.edu.au/research-services/ethics-and-integrity/animal-ethics>)
- Use of Scheduled Drugs and Poisons (WHS-PRO-011 Drugs and Poisons Procedure).
- Use of Carcinogens (substance listed in Schedule 10 WH&S Regulation Qld) (WHS-PRO-011 Drugs and Poisons Procedure).
- Hazardous Chemicals and Dangerous Goods (WHS-PRO-010 Hazardous Chemicals Procedure).
- Radiation sources (WHS-PRO-014 Ionising Radiation Procedure).
- Permits to access geographical locations GBRMPA or National Parks.
- Use of Cytotoxic Drugs.
- Import or Export of Quarantine material.