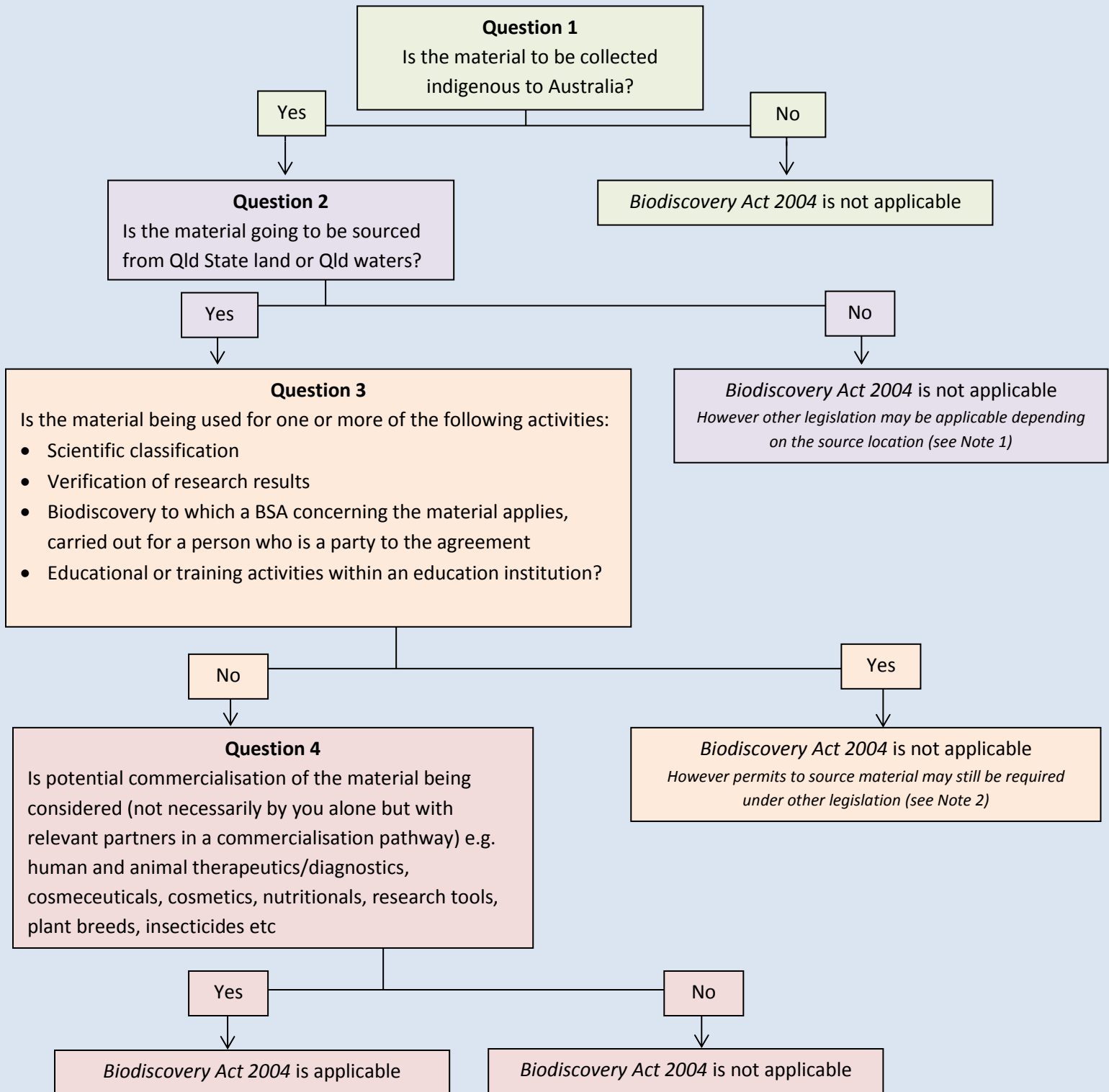


**Biodiscovery Act 2004 (Qld) – Decision Tree**



*Note 1:* If material is sourced from Commonwealth areas the *Environment Protection and Biodiversity Conservation Act 1999* and *Regulations 2000* may be applicable (contact Department of Environment). If material is sourced from an area which is subject to a Native Title determination then international protocols such as the Nagoya Protocol (Article 5) suggest the aim of ensuring that benefits arising from the utilization of genetic resources that are held by indigenous and local communities are shared in a fair and equitable way with the communities concerned, based on mutually agreed terms.

*Note 2:* Permits and authorities might be required under other legislation depending on the resources being taken and their location. For example permits for protected areas are issued under the *Nature Conservation Act 1992* and *Nature Conservation (Administration) Regulation 2006* to take, use, keep or interfere with cultural or natural resources (contact Qld Department of Environment and Heritage Protection). Similarly the *Fisheries Act 1994* may apply in the case of fisheries resources (contact Qld Department of Agriculture and Fisheries)