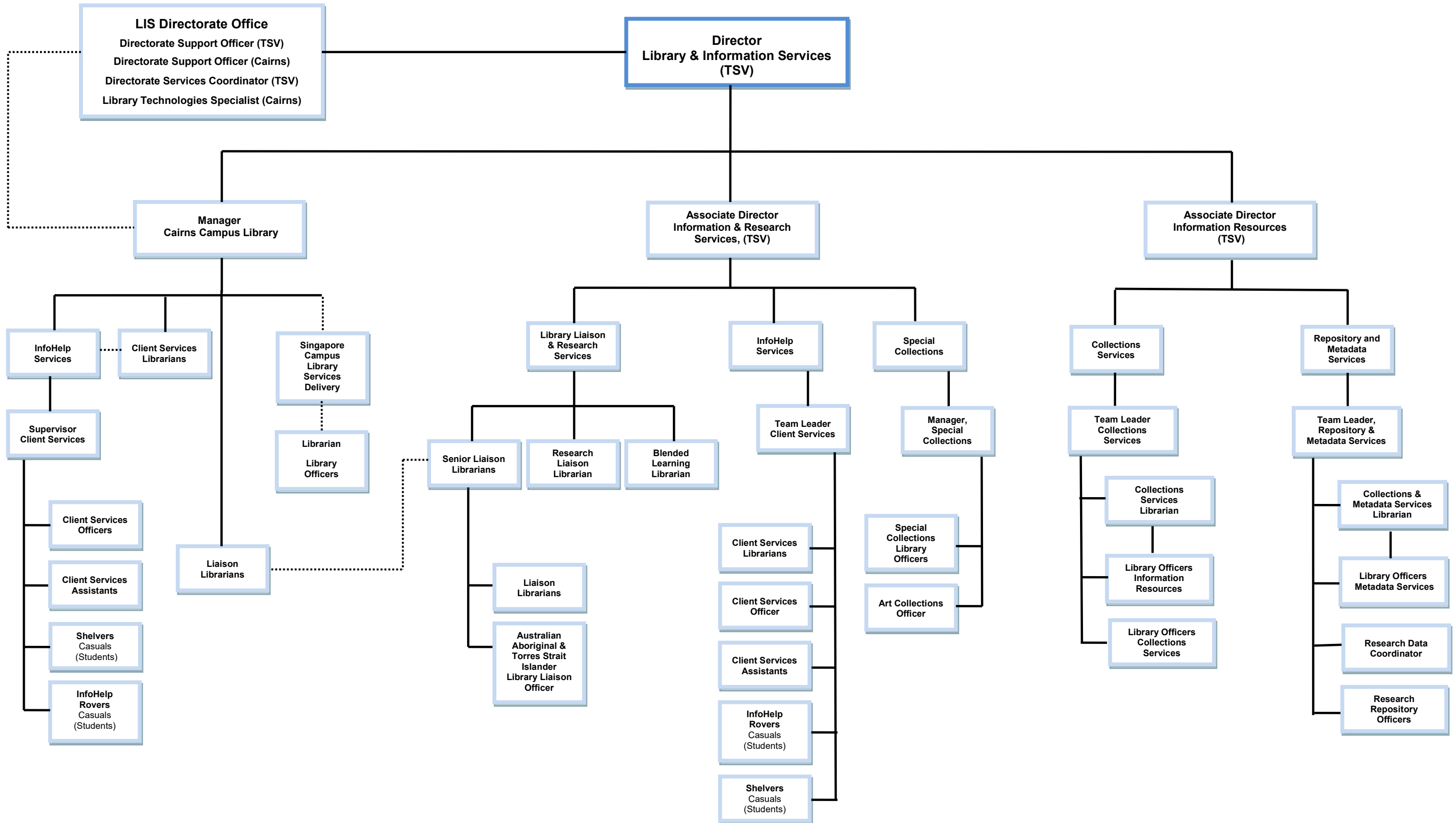


The Library and Information Services Directorate provides innovative, high quality, client-focused library services including research skills, digital and information literacies, information resources, scholarly and cultural collections; and learning facilities that contribute to and enhance the University's learning, teaching, and research priorities. The Directorate has a library and information commons at the Townsville and Cairns campuses and delivers a wide range of online resources and services to all campus and study locations and to clients both on and off campus.

A to Z service list is available at jcu.edu.au/library/a-z

Service Areas	Copyright	Client Services	Learning & Teaching Services	Research & Research Education Services	Information Access & Resources	Special Collections
Head & key email contact	Helen Hooper Director, Library & Information Services JCU Copyright Officer copyright@jcu.edu.au	Bronwyn Mathiesen Associate Director, Information & Research Services bronwyn.mathiesen@jcu.edu.au Kate Wanchap Manager, Cairns Campus Library kate.wanchap@jcu.edu.au	Bronwyn Mathiesen Associate Director, Information & Research Services bronwyn.mathiesen@jcu.edu.au Kate Wanchap Manager, Cairns Campus Library kate.wanchap@jcu.edu.au	Tove Lemberget Team Leader, Repository & Metadata Services tove.lemberget@jcu.edu.au Clair Meade Research Data Coordinator clair.meade@jcu.edu.au Research Liaison Librarian <i>[Vacant, contact relevant Senior Liaison Librarian]</i>	Carolyn Tredrea Associate Director, Information Resources carolyn.tredrea@jcu.edu.au Alan Cockerill Library Technologies Specialist alan.cockerill@jcu.edu.au	Bronwyn McBurnie Manager Special Collections bronwyn.mcburnie@jcu.edu.au specialcollections@jcu.edu.au artcollection@jcu.edu.au
Services	Provide assistance, training, and online information about using and creating copyright material for educational and research purposes including: <ul style="list-style-type: none"> CAL payments Creative Commons Copyright audits and compliance Copyright infringement Copyright notices Copyright permissions 	High quality, client focused library and information services including: <ul style="list-style-type: none"> Assignment research help Borrowing services CopyPrint and 3D printing services Exhibitions First tier ICT support including InfoHelp Rovers service InfoHelp F2F, email, phone and virtual chat enquiries and assistance Library and Information Commons spaces Referencing assistance Readings and past exams (subject resources and past exams repository) 	Digital and information literacy teaching and education including: <ul style="list-style-type: none"> Bibliographic software training and support Co-teaching with academic and other staff College liaison services Generic and subject/course specific information literacy classes and workshops (F2F and online) Development & management of online guides and FAQ database Referencing and academic integrity training and support JCU Online liaison services 	Specialist services and resources to researchers and higher degree research students including: <ul style="list-style-type: none"> Academic promotion support Bibliographic software support Open Access and scholarly publishing Managing copyright for publication Using research indicators Researcher profiles and identifiers HDR thesis support Research data management ResearchOnline@JCU <ul style="list-style-type: none"> JCU research publications and other research outputs ERA collections 	Discovery and access to library resources and JCU research outputs including: <ul style="list-style-type: none"> Provision of library collections, services and facilities Acquisition, metadata and management of print and digital library resources Discovery and retrieval systems and applications including remote access to information resources Issue of ISBNs and ISSNs for University publications Interlibrary loans and document supply requests JCU thesis deposit Off campus services Textbooks and etexts advice 	Promote discovery, access and preservation for collections of cultural and historical significance to North Queensland and the tropics including: <ul style="list-style-type: none"> NQHeritage@JCU – online repository NQ Collection North Queensland Photographic Collection Library Archives Rare Book Collection Shaw Collection of Australian Art and Culture Management of JCU Art Collection <ul style="list-style-type: none"> Acquisitions/donations Artists Loan Scheme (Cairns) Condition and maintenance Curation/database Location/borrowing of artworks
Resource Links	Copyright	Borrowing Client Service Charter InfoHelp Library Use Policy Readings and Past Exams Visitors and Library Services	LibGuides Library Resources Checklist for Teaching Staff New Staff Guide Teaching Support Services	ResearchOnline Research Support LibGuides Research Support Services Tropical Data Hub	Collection Development Guidelines Donations Guidelines Off Campus Service Purchase Request Form	NQHeritage Special Collections Collection Development Guidelines for Special Collections

LIBRARY & INFORMATION SERVICES



..... Informal reporting
or other relationship

**Date: Feb 2019
(Position Titles)**