



RESPECT IS CENTRAL





To find honey ants, respect is central: What we found when reviewing knowledge stories about quality improvement in Aboriginal and Torres Strait Islander primary health care services.

Since 2019, our LEAP research team has been digging for knowledge stories to understand how we can work with mob so they can have a good, healthy life – it has been like looking for the best ways to dig for honey ants that live under Mulga trees in the desert. Honey ants are a source of life that helps keeps desert mob healthy, just like our health centres can help keep all mob healthy when we work together.

Our LEAP team searched for the best way to get to the Mulga trees that the honey ants live under, and then find out the best way to do things proper / cultural ways to dig to the honey ants. We had been told from other high-improving health care services what worked for them. We wanted to see if there were other knowledge stories that told us the same story, or something different.

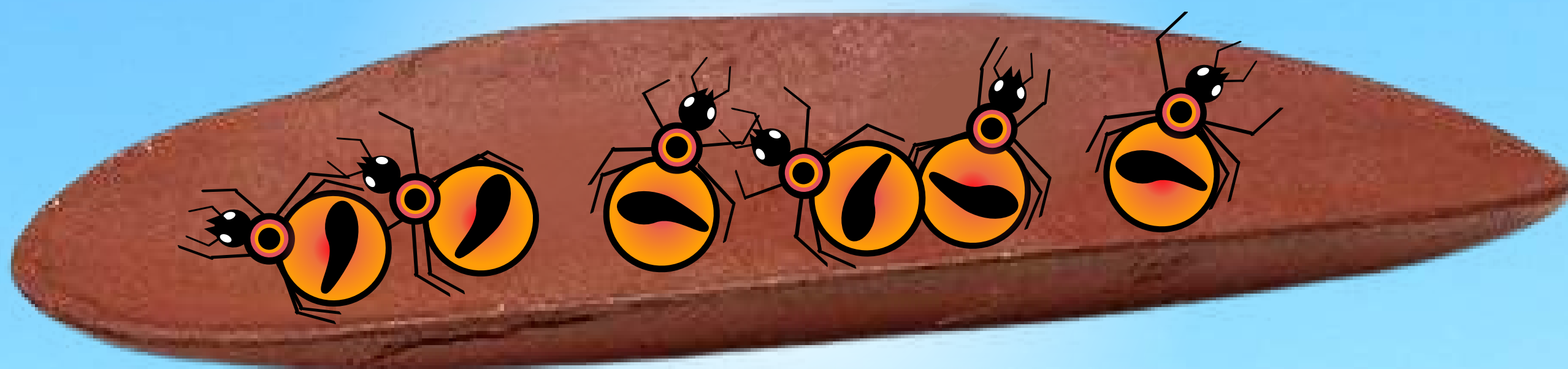
After searching three databases and a big journal 'Implementation Research', we found 4831 knowledge stories about how health workers could help mob find the honey ants, that is how to help keep mob well. That was a lot of reading! We tried to answer this question: What ideas about quality improvement can be found in published implementation frameworks? Implementation frameworks are like maps for doing good work – like maps to the Mulga trees where the honey ants live.

As a team of Aboriginal and non-Aboriginal researchers we yarned a lot and then we decided that out of all those implementation frameworks, there were nine knowledge stories (implementation frameworks) that really helped us to understand how to find the honey ants. We then looked carefully at the frameworks and saw that many of them talked about how to get to the place the honey ants live, but most were missing something very important – the Mulga tree of respect.

Our Anmatyerre and Jaru team leader, Nalita Nungarrayi Turner, told us that Respect is Central. That means you will not find the honey ants without respect.

We found respect is made up of lots of things, respect for the past, respect for culture, respect for elders, respect for people, respect for ourselves, respect for families, respect for women, respect for men, respect for young ones, respect for the clinic, respect for health workers.

Respect is central to health workers and mob finding that life source, the honey ants. The way the honey ants can survive and thrive is because of that healthy Mulga tree of respect.



LEAP is a core project of CRE-STRIDE and funded by the National Health and Medical Research Council of Australia (1148660)